

IC Recorder Operating Instructions



ICD-TX800



Refer to the Help Guide

This is the Operating Instructions, which provides you with instructions on the basic operations of the IC recorder. The Help Guide is an online manual. Refer to the Help Guide when you would like to know further details, operations and possible solutions when a problem occurs.

http://rd1.sony.net/help/icd/t80/h_zz/

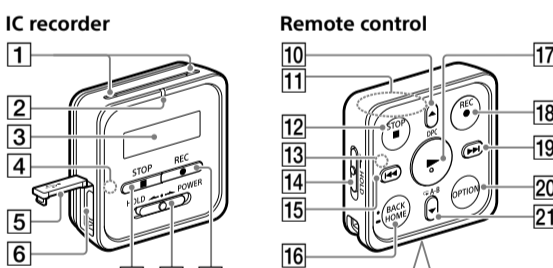


Check the supplied items

- IC Recorder (1)
- Remote control* (1)
- Stereo headphones (1)
- Dedicated headphone cable (1)
- USB cable (1)
- Carrying case (1)
- Operating Instructions (this sheet)
- Application Software, Sound Organizer 2 (Installer file stored in the built-in memory so that you can install it into your computer.)

* A button type lithium battery is already installed.

Parts and controls



Your IC recorder has a built-in clip on its back. You can hook it onto something, such as the hem of a pocket.

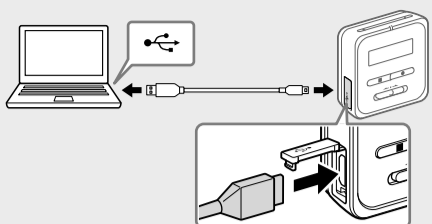
- 1 Built-in microphones
- 2 Operation indicator
- 3 Display window
- 4 Bluetooth indicator*
- 5 USB connector cover
- 6 USB/Headphone connector (inside the USB connector cover)
- 7 ■STOP button
- 8 HOLD+POWER switch*2
- 9 ■REC button
- 10 ▲/DPC (Digital Pitch Control) button
- 11 Built-in antenna*3
- 12 ■STOP button
- 13 Operation indicator
- 14 HOLD switch
- 15 ◀◀ (review/fast backward) button
- 16 ▶▶ (cue/fast forward) button
- 17 ▶ (play/enter) button*4
- 18 ■REC button
- 19 ▶▶▶ (cue/fast forward) button
- 20 OPTION button
- 21 ◀◀/▶▶ A-B (repeat A-B) button
- 22 VOL +/-(volume +/-) button*5
- 23 T-MARK (track mark) button
- 24 RESET button*6
- 25 Strap hole (No strap is supplied with your IC recorder.)
- 26 Battery case*7

*1 The indicator changes in color or flashes to indicate the status of the Bluetooth function or the Bluetooth pairing (device registration).
 *2 Sliding the HOLD+POWER switch to "POWER" and holding it for 8 seconds or longer restarts your IC recorder. Before restarting the IC recorder, make sure the operating indicator is unit. For detailed instructions, refer to the Help Guide.
 *3 When using the remote control, do not cover the built-in antenna, for example with your hand, so as not to disturb the wireless connection with the IC recorder.
 *4 Press this button once to display the previous screen. Press and hold it to display the HOME menu screen.
 *5 There is a tactile dot on the ▶ (play/enter) button and next to +/- on the VOL +/- (volume +/-) button.
 *6 Press this button when the remote control seems not working.
 *7 A button type lithium battery is already installed.

✦ Your IC recorder is not equipped with built-in speakers.
 • You can hear the beep sound only through the headphones connected to your IC recorder.
 • You can change any of the initial settings at any time later. For detailed instructions, refer to the Help Guide.

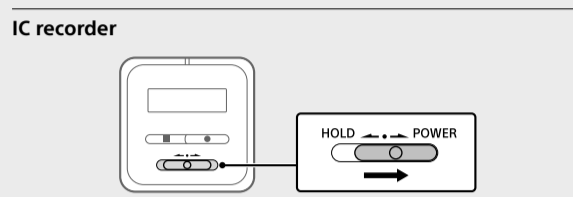
Let's try out your new IC recorder

Charge



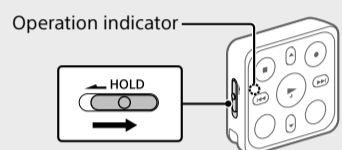
- Charge the IC recorder.**
Using the supplied USB cable, connect the USB/Headphone connector inside the USB connector cover to a USB port of a running computer. Charging starts. When the battery is fully charged, the battery indicator will indicate "100%".
- Disconnect the IC recorder.**
Make sure that the message "Accessing" is no longer on the display window. Then refer to the Help Guide to remove the IC recorder safely.

Power on



Slide and hold the HOLD+POWER switch on the IC recorder in the direction toward "POWER" until the window display appears.
 To power off, slide the HOLD+POWER switch on the IC recorder to "POWER" and hold it until "Power Off" appears on the display window.

Remote control

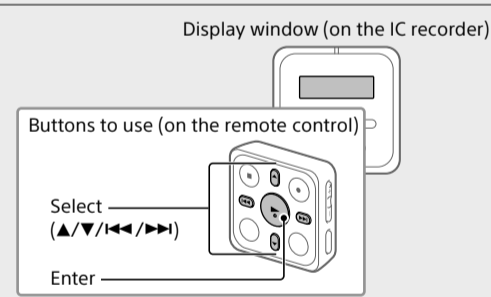


Slide the HOLD switch away from "HOLD". To power on the remote control, press any one of the buttons on the remote control. When the operation indicator on the remote control stops flashing, operations with the remote control are available.
 The remote control is not equipped with the power button. It automatically powers off in the following cases:
 • If the wireless connection is not established with the IC recorder and you leave the remote control unused for about 5 minutes
 • If the wireless connection is established with the IC recorder and
 - you power off the IC Recorder
 - you leave the remote control unused for about 2 hours
 To use the remote control for operations after it powers off, follow the above procedure to power on the remote control, and then press your desired button on the remote control once again.

- ### To prevent unintentional operations (HOLD)
- The IC recorder and the remote control are each equipped with the switch to hold the operation.
 Slide the HOLD+POWER switch on the IC recorder or the HOLD switch on the remote control in the direction of "HOLD".
- IC recorder**

Remote control
- ✦ To release the IC recorder or the remote control from the Hold status, slide the HOLD+POWER switch towards the center or the HOLD switch away from "HOLD", respectively.

Initial settings



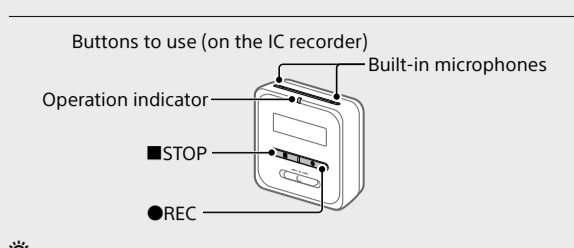
When you power on your IC recorder for the first time, the "Configure Initial Settings" screen appears on the display window of the IC recorder. Use the remote control to make initial settings, such as selecting the display language, setting the clock, and turning on/off the beep sound.

- Slide the HOLD switch away from "HOLD" to release the remote control from the HOLD status.**
Remove the yellow label from the back of the remote control when you use it for the first time.
- When "Configure Initial Settings" screen appears, press any button on the remote control.**
If the operation indicator on the remote control is flashing, wait until it stops flashing before proceeding to the next step.
- Press ▶▶ to start the initial settings.**
Configure Initial Settings
- Select the display language.**
You can select from the following languages: Deutsch (German), English*, Español (Spanish), Français (French), Italiano (Italian), Русский (Russian), Türkçe (Turkish), 한국어 (Korean), 简体中文 (Simplified Chinese), 繁體中文 (Traditional Chinese)
* Default setting
- Set the current year, month, day, hour, and minute.**
2017 | 1 m 1 d | 12:00 AM
Next Back
- Select "Next."**
2017|01|04 | 10:00 AM | No
- Select "Yes" or "No" to turn on or off the beep sound.**
When the initial settings finish, the completion message and then the HOME menu screen appears.
Use Beep? Yes No

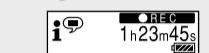
- ✦ To go back to the previous clock setting item, press BACK/HOME.
 ✦ To go back to the previous clock setting item, press BACK/HOME.
 ✦ To go back to the previous clock setting item, press BACK/HOME.
- ✦ Select "Next."
 2017|01|04 | 10:00 AM | No
 Next Back
- ✦ Select "Yes" or "No" to turn on or off the beep sound.
 When the initial settings finish, the completion message and then the HOME menu screen appears.
 Use Beep? Yes No

- ✦ Your IC recorder is not equipped with built-in speakers.
- You can hear the beep sound only through the headphones connected to your IC recorder.
- You can change any of the initial settings at any time later. For detailed instructions, refer to the Help Guide.

Record



- To start recording, you can operate either the IC recorder or the remote control.
 - Before you start recording, make sure that the HOLD status is released.
 - You can select a operation scene for each situation by selecting "Scene Select" in the OPTION menu with the remote control.
- Turn the IC recorder so that its built-in microphones point in the direction of the recording source.**
 - Press ■REC.**
Make sure that the operation indicator on the IC recorder lights in red, indicating that recording has started.



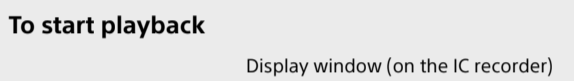
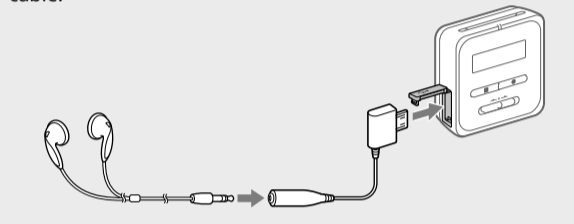
- Press ■STOP to stop recording.**
Recording stops and "Saving..." appears on the display window.

Listen

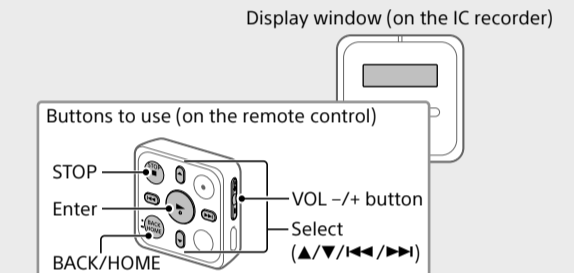
Your IC recorder is not equipped with a built-in speaker. For audio listening, you need to connect the stereo headphones (supplied) to the IC recorder with the dedicated headphone cable (supplied). For playback operations, use the remote control.

Listening preparation

Connect the stereo headphones to the USB/Headphone connector on the IC recorder with the dedicated headphone cable.



To start playback

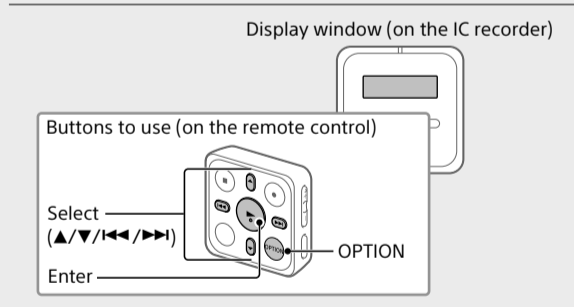


- While watching the display window on the IC recorder, operate the remote control to select "Recorded Files" from the HOME menu.**
- Select "Latest Recording," "Search by REC Date," "Search by REC Scene," or "Folders."**
- Select your desired file.**
Playback starts.
- Press VOL + or VOL - to adjust the volume.**
- Press ■STOP to stop playback.**

✦ Right after you stopped recording, you can press ▶▶ to play the file you have just recorded.

To add a track mark
 You can add a track mark at a point at which you want to divide a file later or locate during playback. You can add a maximum of 98 track marks to each file.
 You can also add track marks during recording.

Delete



✦ To delete a file, you need to operate the remote control.

- ✦ Note: Once a file is deleted, you cannot restore it.
- While watching the display window on the IC recorder, operate the remote control to select the file you want to delete from the list of recorded files or play back the file you want to delete.**
- Select "Delete a File" from the OPTION menu.**
Delete a File
Please Press the Button on the Remote Control to Select Track Mark List
"Delete?" appears and the selected file starts playing for your confirmation.
- Select "Yes."**
Please Wait
* Please Wait appears and stays until the selected file is deleted.

The display window turns off automatically

The "Screen Off Timer" setting on your IC recorder is set to "30sec" by default to save battery power. If you leave both the IC recorder and the remote control unused for 30 seconds, the display window will turn off, but you can still perform any button operations. To turn the display window back on, press BACK/HOME or slide the HOLD+POWER switch on the IC recorder to "HOLD" and then slide it back to the original (center) position.

- ✦ You can keep the display window from turning off or change the default setting to another timer interval. Press and hold BACK/HOME and select "Settings" - "Common Settings" - "Screen Off Timer," and then select "No Auto Screen Off," "15sec," "30sec," "1min," "3min," or "5min."

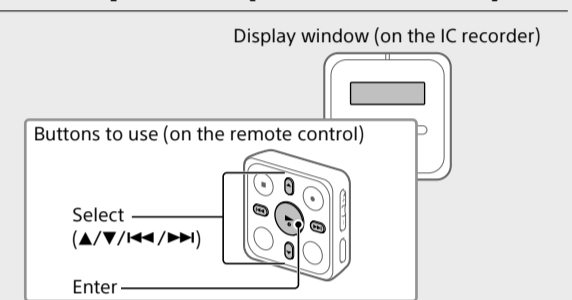
Notes on the operations

- When the button operations of the remote control do not work, check if
 - the IC recorder is powered.
 By default, the IC recorder will automatically power off if you leave it unused for 30 minutes.
 - the remote control is released from the HOLD status.
 - the wireless connection process with the IC recorder is in progress.
 The operation indicator on the remote control flashes while the wireless connection is being established.
- You can check the indication of the operation indicator on the remote control for the status of the remote control.

Indication of the operation indicator	Status of the remote control
Flashes twice in blue*.	Powered on.
Lights in blue for 2 seconds.	Powered off.
Flashes four times in blue*.	Resetting of the remote control is complete.
Stays lit in red.	Not operable due to battery shortage.
Flashes alternately in blue and red.	Device registration process is in progress.
Flashes twice in blue* repeatedly.	Wireless connection process is in progress.
Flashes once in blue*.	Wireless connection established and button operations are available.

* When the battery is running out of power, the operation indicator on the remote control lights in red.

Operations with the smartphone (REC Remote)



With the BLUETOOTH® function of your IC recorder, you can operate your IC recorder (recording, changing the recording settings, etc.) using a smartphone.

To operate your IC recorder using a smartphone
 You need to install REC Remote on the smartphone and make a pairing between the smartphone and your IC recorder. Pairing means having Bluetooth devices registered with each other to establish a wireless connection for the first time. To make a pairing with the IC recorder using REC Remote, you need the latest version of REC Remote. If your smartphone has REC Remote already installed, be sure to upgrade it to the latest version.

- Search Google Play or App Store for REC Remote and install it on the smartphone.
- On the IC recorder, select "REC Remote"- "Add Device (Pairing)" from the HOME menu with the remote control and follow the on-screen instruction to turn on the Bluetooth function.
- On the smartphone, start REC Remote and select "ICD-TX800" (your IC recorder) from the available device list. For detailed instructions, refer to the help of REC Remote and the manual supplied with the smartphone.
 Now you can use the smartphone for IC recorder operations.

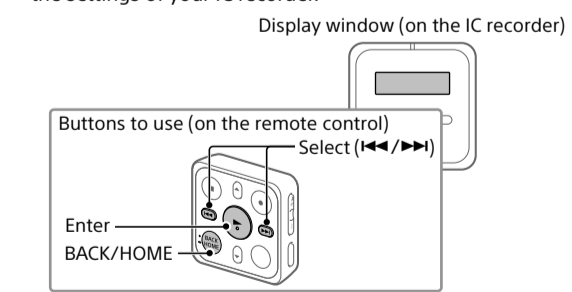
- ✦ Note: The device registration (pairing) information is cleared in the following cases. You need to pair the devices once again.
 - The settings on the IC recorder, the smartphone, or both devices are reset to the default settings, for example, due to initialization.
 - The device registration (pairing) information is deleted, for example, during the course of a repair service.

To turn on or off the Bluetooth function of your IC recorder

- Select "REC Remote" - "Bluetooth ON/OFF" from the HOME menu.
 - To turn on the Bluetooth function, select "ON." To turn it off, select "OFF."
- ✦ Turning off the Bluetooth function conserves battery power.

Using the HOME menu

You can use the HOME menu for a variety of operations, including locating and playing a recorded file and changing the settings of your IC recorder.



- ✦ To use the HOME menu, you need to operate the remote control.
- Press and hold BACK/HOME.**
The HOME menu screen appears on the display window of the IC recorder.
- The HOME menu items are aligned in the following sequence.



- ✦ To use the HOME menu, you need to operate the remote control.
- Press and hold BACK/HOME.**
The HOME menu screen appears on the display window of the IC recorder.

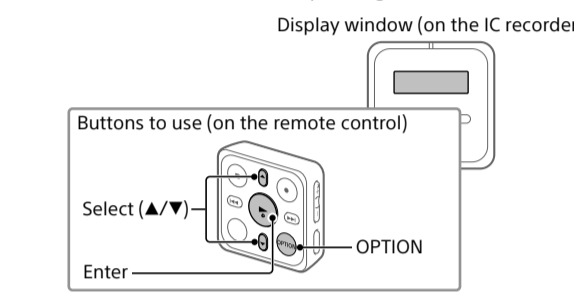
- Select your desired function from the following:**
 - Music:** You can select and play one of the files you have imported from a computer. To locate a music file, select "All Songs," "Albums," "Artists," or "Folders." When importing files, be sure to import them into the MUSIC folder.
 - Recorded Files:** You can select and play one of the files you have recorded with your IC recorder. To locate a recorded file, select "Latest Recording," "Search by REC Date," "Search by REC Scene," or "Folders."
 - Record:** You can display the record standby screen, and then start recording.
 - REC Remote:** You can display the menu screen for REC Remote that uses the Bluetooth function. Additionally, you can turn on/off the Bluetooth function or make device registration (pairing) for using REC Remote.
 - Settings:** You can display the Settings menu screen and change various settings on the IC recorder.
 - Back to XX*** You can go back to the screen that was displayed before the HOME menu screen.

* The function you are currently using is displayed in "XX."

✦ Press ■STOP to return to the screen displayed before you entered the HOME menu.

Using the OPTION menu

You can use the OPTION menu to perform a variety of functions, including changing the settings of your IC recorder. The available items differ depending on the situation.



✦ To use the OPTION menu, you need to operate the remote control.

- Select your desired function from the HOME menu, and then press OPTION.**
- Select the menu item for which you want to change the setting.**
- Select your desired setting option.**

Copying files from your IC recorder to a computer

You can copy the files and folders from your IC recorder to a computer to store them.

- Follow the instructions in "Charge" to connect your IC recorder to a computer.
- Drag and drop the files or folders you want to copy from "IC RECORDER" to the local disk on the computer.
- Disconnect your IC recorder from the computer.

Installing Sound Organizer 2

Install Sound Organizer on your computer. Sound Organizer allows you to exchange files between your IC recorder and your computer. Songs imported from music CDs and other media, MP3 and other audio files imported to a computer can also be played and transferred to the IC recorder.

- ✦ Notes:
 - Sound Organizer is compatible with Windows computers only. It is not compatible with Mac.
 - This IC recorder is compatible with Sound Organizer 2 only. If you format the built-in memory, all data stored there will be deleted. (The Sound Organizer software installer will also be deleted.)

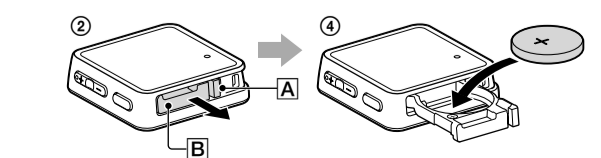
- ✦ When installing Sound Organizer, log in to an account with administrator privileges.
- The installation procedure varies depending on the Windows version. The following procedure uses Windows 7 as an example.

- Follow the instructions in "Charge" to connect your IC recorder to a computer.
- Make sure the IC recorder is successfully detected by the computer.**
"Connecting" appears and stays on the IC recorder's display window while the IC recorder is connected to the computer.
- Go to the [Start] menu, click [Computer], and then double-click [IC RECORDER] - [FOR WINDOWS].**
- Double-click [SoundOrganizer_V2001] (or [SoundOrganizer_V2001.exe]).**
Follow the computer's on-screen instructions.
- Make sure that you accept the terms of the license agreement, select [I accept the terms in the license agreement], and then click [Next].**
- When the [Setup Type] window appears, select [Standard] or [Custom], and then click [Next].**
Follow the instructions on the screen and set the installation settings when you select [Custom].
- When the [Ready to Install the Program] window appears, click [Install].**
The installation starts.
- When the [Sound Organizer has been installed successfully.] window appears, check [Launch Sound Organizer Now], and then click [Finish].**

- ✦ Note: You may need to restart your computer after installing Sound Organizer.

Replacing the battery of the remote control

When the indicator on the remote control lights in red, the battery is running out of power. Follow these steps to replace the battery. Be sure to use the button type lithium battery, CR2032, for replacement.



- Turn over the remote control to face it down.

- Push and hold the tab (A) toward the groove (B), insert your fingernail into the groove (B), and then pull out the battery case.**
- Remove the battery.**
- Place the new battery with the + side facing up.**
- Insert the battery case back into the remote control.**
- Press the RESET button on the back of the remote control.**
- Press any button on the remote control (the operation indicator on the remote control flashes alternately in blue and red) to power it on, and then power on the IC recorder.**
When the operation indicator on the remote control stops flashing, operations with the remote control are available.

Precautions

- **On power**
 - IC Recorder: DC 3.7V; the built-in rechargeable lithium-ion battery DC 5.0V; when charged using USB Rated current consumption : 500mA
 - Remote Control: DC 3V ; CR2032 (Button type lithium battery)
- **On safety**
 Do not operate the unit while driving, cycling or operating any motorized vehicle.
- **On handling**
 - Do not leave the unit in a location near heat sources, or in a place subject to direct sunlight, excessive dust or mechanical shock.
 - Should any solid object or liquid fall into the unit, remove the battery and have the unit checked by qualified personnel before operating it any further.
 - When using your IC recorder, remember to follow the precautions below in order to avoid warping the cabinet or causing the IC recorder to malfunction.
 - Do not sit down with the IC recorder in your back pocket.
 - Do not put your IC recorder into a bag with the headphones/earphones cord wrapped around it and subject the bag to strong impact.
 - Be careful not to allow water to splash on the unit. The unit is not waterproof. In particular, be careful in the following situations.
 - When you have the unit in your pocket and go to the bathroom, etc.
 - When you bend down, the unit may drop into the water and may get wet.
 - When you use the unit in an environment where the unit is exposed to rain, snow, or humidity.
 - In circumstances where you get sweaty. If you touch the unit with wet hands or if you put the unit in the pocket of sweaty clothes, the unit may get wet.
 - Listening with this unit at high volume may affect your hearing.
 - For traffic safety, do not use this unit while driving or cycling.
 - Do not use this unit at a place where the inability to hear surrounding sounds may present a danger.
 - You may feel pain in your ears if you use the headphones when the ambient air is very dry.
 - This is not because of a malfunction of the headphones, but because of static electricity accumulated in your body. You can reduce static electricity by wearing non-synthetic clothes that prevent the emergence of static electricity.

- **Dimensions (w/h/d) (not incl. projecting parts and controls)**
 - IC recorder: Approx. 38.0 mm x 38.0 mm x 13.7 mm
 - Remote control: Approx. 38.0 mm x 38.0 mm x 10.8 mm
- **Mass**
 - IC recorder: Approx. 22 g
 - Remote control: Approx. 15 g (including a button type lithium battery)
- **Temperature/Humidity**

Operating temperature	5°C - 35°C
Operating humidity	25% - 75%
Storage temperature	-10°C - +45°C
Storage humidity	25% - 75%

*1 A small amount of the built-in memory is used for file management and therefore not available for user storage.
 *2 When the built-in memory is formatted with the IC recorder.
 *3 Default settings for the recording scenes.
 *4 The battery life is given only for reference purposes. It also varies depending on factors such as usage conditions and ambient temperatures.

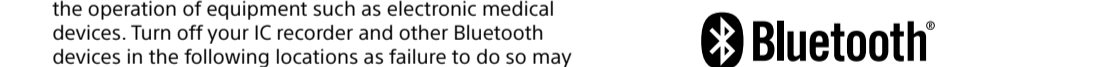
Bluetooth specification

- Communication system: Bluetooth specification version 4.0
 - Maximum communication range: Line of sight approx. 10 m*
 - Frequency band: 2.4 GHz band (2.4000 GHz - 2.4835 GHz)
- * The range may vary depending on the communication environment.

Trademarks and licenses

- Microsoft, Windows and Windows Media are registered trademarks or trademarks of Microsoft Corporation in the United States and/or other countries.
- MPEG Layer-3 audio coding technology and patents licensed from Fraunhofer IIS and Thomson.
- Google Play and Android are trademarks of Google LLC.
- Apple, the Apple logo, iPhone and Mac are trademarks of Apple Inc., registered in the U.S. and other countries. App Store is a service mark of Apple Inc., registered in the U.S. and other countries.
- Use of the Made for Apple badge means that an accessory has been designed to connect specifically to the Apple product(s) identified in the badge, and has been certified by the developer to meet Apple performance standards. Apple is not responsible for the operation of this device or its compliance with safety and regulatory standards.
- Compatible iPhone models: iPhone 7, iPhone 7 Plus, iPhone SE, iPhone 6s, iPhone 6s Plus, iPhone 6, iPhone 6 Plus, iPhone 5s, iPhone 5c, iPhone 5

✦ The BLUETOOTH® word mark and logos are registered trademarks owned by Bluetooth SIG, Inc. and any use of such marks by Sony Corporation is under license. Other trademarks and trade names are those of their respective owners.



All other trademarks and registered trademarks are trademarks or registered trademarks of their respective holders. Furthermore, "™" and "®" are not mentioned in each in this manual.

This product is protected by certain intellectual property rights of Microsoft Corporation. Use or distribution of such technology outside of this product is prohibited without a license from Microsoft or an authorized Microsoft subsidiary.

The "Sound Organizer 2" uses software modules as shown below: Windows Media Format Runtime

Notes on the License
 This IC recorder comes with software that are used based on licensing agreements with the owners of that software. Based on requests by the owners of copyright of these software applications, we have an obligation to inform you of the following. Please read the following sections.
 Licenses (in English) are recorded in the built-in memory of your IC recorder. Establish a Mass Storage connection between the IC recorder and a computer to read licenses in the "LICENSE" folder.

On GNU GPL/LGPL applied software
 The software that is eligible for the following GNU General Public License (hereinafter referred to as "GPL") or GNU Lesser General Public License (hereinafter referred to as "LGPL") are included in the IC recorder. This informs you that you have a right to have access to, modify, and redistribute source code for these software programs under the conditions of the supplied GPL/LGPL. Source code is provided on the web. Use the following URL to download it.
 http://www.sony.net/Products/Linux/We would prefer you do not contact us about the contents of source code.
 Licenses (in English) are recorded in the built-in memory of your IC recorder. Establish a Mass Storage connection between the IC recorder and a computer to read licenses in the "LICENSE" folder.

CAUTION

Danger of explosion if battery is incorrectly replaced. Replace only with the same or equivalent type.

Risk of explosion if battery is replaced by an incorrect type. Insert your fingernail into the groove (B), and then pull out the battery case.

Information for customers in the UAE

TRA
 REGISTERED No: ER57553/17
 DEALER No: DA0096946/12

Specifications

Capacity (User available capacity)*1*2
 16 GB (approx. 12.80 GB = 13,743,895,347 Byte)

Maximum recording time1 (Built-in memory)**
 The maximum recording time of all the folders is as follows.

	21 hours 35 minutes
LPCM 44.1kHz/16bit (STEREO)	21 hours 35 minutes
MP3 192 kbps (STEREO)	159 hours
MP3 128 kbps (STEREO)	238 hours
MP3 48 kbps (MONO)	636 hours

Battery Life
 • IC recorder (a built-in rechargeable lithium-ion battery)

REC Mode	Recording	Playback with the headphones	Recording with REC Remote
LPCM 44.1kHz/16bit	Approx. 12 hours	Approx. 10 hours	Approx. 6

IC錄音機 使用說明書

內建麥克風、USB電纜、內建充電式電池

內建充電式電池

內建充電式電池

內建充電式電池

內建充電式電池

內建充電式電池

內建充電式電池

內建充電式電池

內建充電式電池

內建充電式電池

內建充電式電池

內建充電式電池

詳情請參閱說明指南

這是一份提供IC錄音機基礎操作說明的使用說明書。說明指南登錄上手冊。

如果您想要瞭解進一步的詳細資料、操作說明、以及問題發生時可行的解決方案，請參閱說明指南。

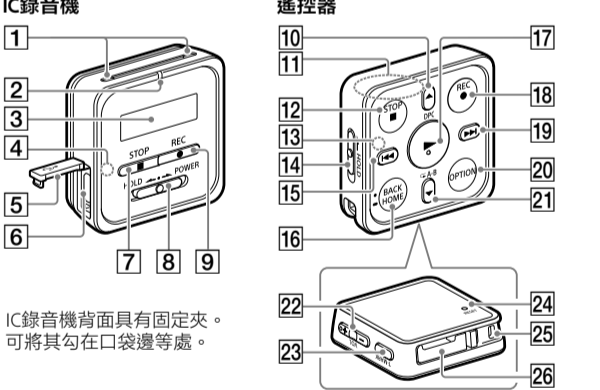
http://rd1.sony.net/help/icd/t80/h_zz/



請檢查附件項目

- IC錄音機 (1)
- 遙控器* (1)
- 立體聲耳機 (1)
- 專用耳機纜線 (1)
- USB電纜 (1)
- 攜行包 (1)
- 使用說明書 (本摺頁)
- Sound Organizer 應用程式軟體 (安裝程式檔案儲存於內建記憶體中，您可以將軟體安裝在電腦上。)
- *已安裝組扣型鋰電池。

零件與控制按鈕



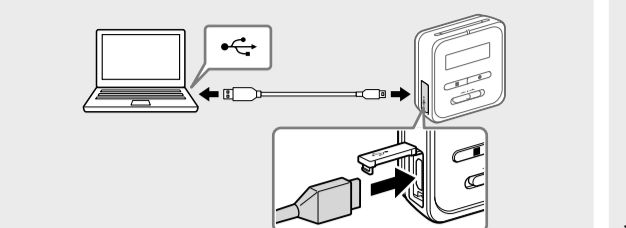
- 內建麥克風
- 操作指示燈
- 顯示視窗
- Bluetooth指示燈*1
- USB接頭保護蓋
- USB/耳機接頭 (位於USB接頭保護蓋內)
- STOP按鈕
- HOLD-POWER開關*2
- REC (錄音) 按鈕
- ▲/DPC (Digital Pitch Control) 按鈕
- 內建天線*3
- STOP按鈕
- 操作指示燈
- HOLD開關
- ◀▶ (倒帶/快倒) 按鈕
- BACK/◀/HOME按鈕*4
- ▶▶ (播放/輸入) 按鈕*5
- REC (錄音) 按鈕
- ▶▶▶ (提示/快進) 按鈕
- OPTION按鈕
- ◀▶◀ A-B (重播A-B) 按鈕
- VOL -/+ (音量 +/-) 按鈕*5
- ↑-MARK (曲目標記) 按鈕
- RESET按鈕*6
- 腕帶孔 (IC錄音機未附腕帶)
- 電池盒*7

- *1 指示燈會交替顏色或閃爍以表示Bluetooth功能或Bluetooth配對 (裝置登錄) 狀態。
- *2 將HOLD-POWER開關滑向“POWER”並按住8秒以上，即可重新啟動IC錄音機。重新啟動IC錄音機前，請確認操作指示燈亮起。如需詳細說明，請參閱說明指南。
- *3 使用遙控器時，請勿遮擋內建天線 (例如：用手握佳)，以免干擾與IC錄音機的無線連線。
- *4 按此按鈕可顯示上一個畫面。按在此按鈕可顯示HOME選單畫面。
- *5 ▶▶ (播放/輸入) 按鈕上及VOL -/+ (音量 +/-) 按鈕的“*”旁都有一個觸點。
- *6 遙控器似乎沒有作用時，請按此按鈕。
- *7 已安裝組扣型鋰電池。

✳ 此IC錄音機沒有配備內建喇叭。

讓我們來試用的新IC錄音機

充電

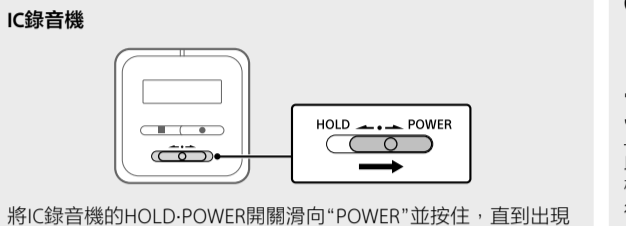


- 對IC錄音機充電。**

使用隨附的USB電纜，將USB接頭保護蓋中的USB/耳機連接線按至正在運行之電腦的USB連接埠。充電隨即開始。電池完全充滿時，電池指示燈會顯示“◻◻◻◻◻◻◻◻◻”。
- 中斷IC錄音機的連接。**

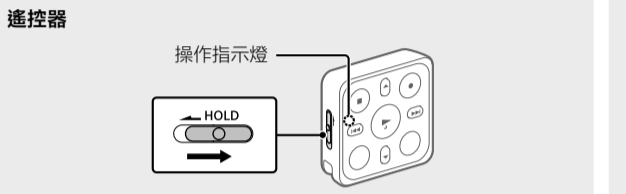
確認顯示視窗沒有顯示“Accessing”訊息。然後參閱說明指南，安全地移除IC錄音機。

開啟電源



將IC錄音機的HOLD-POWER開關滑向“POWER”並按住，直到出現螢幕顯示畫面。

若要關閉電源，請將IC錄音機的HOLD-POWER開關滑向“POWER”並按住，直至顯示視窗顯示“Power Off”。



將HOLD開關滑離“HOLD”位置。

若要開啟遙控器的電源，請按遙控器的任意按鈕。遙控器的操作指示燈停止閃爍時，即可操作遙控器。遙控器沒有配備電源按鈕。

遙控器在以下情況下會自動關閉電源：

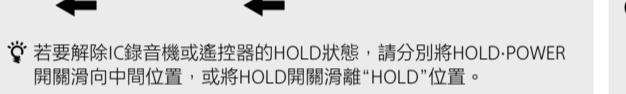
- 沒有和IC錄音機建立無線連線，而且保持開置約5分鐘。
- 沒有和IC錄音機建立無線連線，而且
 - 有和IC錄音機建立無線連線，而且
 - 您關閉IC錄音機的電源
 - 遙控器保持開置約2小時

遙控器的電源關閉後，若要使用遙控器進行操作，請依照上述程序開啟遙控器的電源，然後再按一次所需的遙控器按鈕。

防止意外操作 (HOLD)

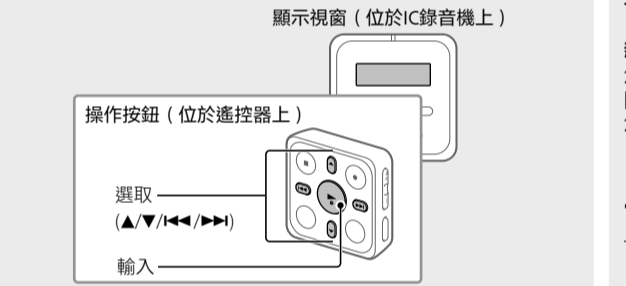
IC錄音機和遙控器均配備鎖定操作的開關。

將IC錄音機的HOLD-POWER開關或遙控器的HOLD開關滑向“HOLD”。



✳ 若要解除IC錄音機或遙控器的HOLD狀態，請分別將HOLD-POWER開關滑向中間位置，或將HOLD開關滑離“HOLD”位置。

初始設定



首次開啟IC錄音機的電源時，“Configure Initial Settings”畫面會出現在IC錄音機的顯示視窗上。請使用遙控器進行初始設定，例如：選取顯示語言、設定時鐘，以及開啟/關閉嘈聲。

- 將HOLD開關滑離“HOLD”位置，解除遙控器的HOLD狀態。**

首次使用遙控器時，請從背面撕下黃色標籤。
- “Configure Initial Settings”畫面出現時，請按遙控器的任意按鈕。**

若遙控器的操作指示燈閃爍，請先等候指示燈停止閃爍，然後再繼續進行下一個步驟。
- 按▶▶▶開始初始設定。**
- 選取顯示語言。**

您可選取以下語言：
 - Deutsch (德文)、English* (英文)、Español (西班牙文)、Français (法文)、Italiano (義大利文)、Русский (俄文)、Türkçe (土耳其文)、한국어 (韓文)、简体中文 (簡體中文)、繁體中文
 - 預設值
- 設定目前的年、月、日、時和分。**

- ✳ 若要返回上一個時鐘設定項目，請按BACK/HOME。

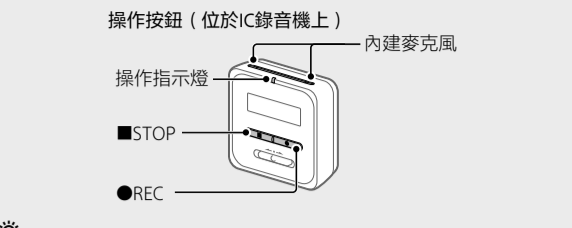
- 選取“Next”。**

- 選取“Yes”或“No”以開啟或關閉嘈聲。**

初始設定完成時，完成訊息及HOME選單畫面會依序顯示。

- 附註**
 - 您僅能透過連接IC錄音機的耳機聽見嘈聲。
 - 您之後隨時可以變更任何初始設定。如需詳細說明，請參閱說明指南。

錄音



- ✳ 若要開始錄音，您可以操作IC錄音機或遙控器。
- 開始錄音前，請確認HOLD狀態已解除。
- 使用遙控器選取OPTION選單中的“Scene Select”，可針對各種情形選取操作場景。

- 將IC錄音機的內建麥克風朝向錄音音源。**
- 按●REC。**

確認IC錄音機的操作指示燈亮起紅色，這表示錄音已經開始。
- 按■STOP停止錄音。**

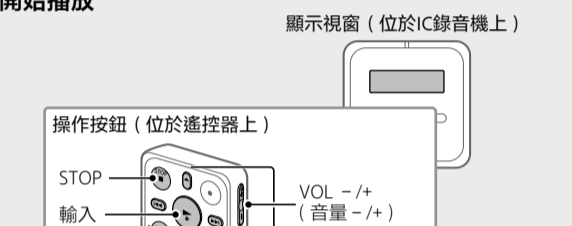
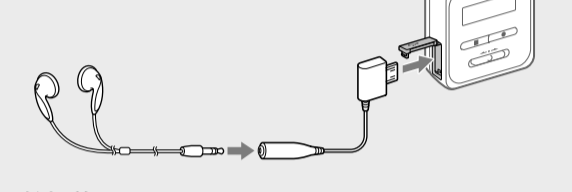
錄音隨即停止，顯示視窗會顯示“Saving...”。

聆聽

此IC錄音機沒有配備內建喇叭。若要聆聽音訊，需要使用專用耳機纜線 (隨附) 將立體聲耳機 (隨附) 連接至IC錄音機。若要進行播放，請使用遙控器。

聆聽準備

使用專用耳機纜線將立體聲耳機連接至IC錄音機的USB/耳機接頭。



- 看著IC錄音機的顯示視窗操作遙控器，從HOME選單選取▶▶▶Recorded Files*。**
- 選擇“Latest Recording”、“Search by REC Date”或“Search by REC Scene”或“Folders”。**
- 選擇您要的檔案，開始播放。**

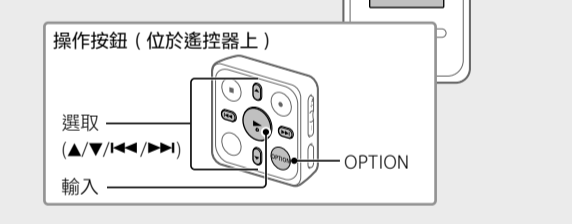
- 按VOL +或VOL -來調整音量。**
- 按■STOP (停止) 停止播放。**

✳ 停止錄音後，您可按▶▶▶立即播放剛錄製的檔案。

新增曲目標記

您可以在某個時間點新增曲目標記，以便之後分割檔案或在播放期間進行搜尋。最多可為每個檔案新增98個曲目標記。您也可以不在錄音期間新增曲目標記。

刪除



✳ 若要刪除檔案，您必須操作遙控器。

- 附註**

檔案一旦刪除，便無法復原。

- 看著IC錄音機的顯示視窗操作遙控器，從已錄製檔案的清單中選取您要刪除的檔案，或播放想要刪除的檔案。**

- 從OPTION選單選擇“Delete a File”。**

- 選擇“Yes”。**

- 按▶▶▶Yes或▶▶▶No**以開啟或關閉嘈聲。

✳ “Please Wait”會出現，直到刪除所選檔案為止。

操作注意事項

- 遙控器的按鈕操作沒有作用時，請檢查：
 - IC錄音機的電源是否開啟。
 - 在預設的情況下，IC錄音機會在保持開置30分鐘後自動關閉電源。
 - 遙控器是否已解除HOLD狀態。
 - 與IC錄音機的無線連線程序是否進行中。
 - 正在建立無線連線時，遙控器的操作指示燈會閃爍。
- 您可以查看遙控器的操作指示燈指示，瞭解遙控器的狀態。

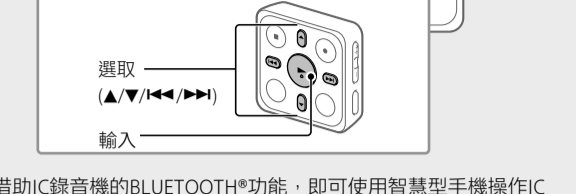
操作指示燈的指示	遙控器狀態
閃爍藍色兩次*。	電源開啟。
亮起藍色2秒*。	電源關閉。
閃爍藍色四次*。	遙控器重設完成。
恆亮紅色。	因電量不足而無法操作。
藍色和紅色交替閃爍。	裝置登錄程序進行中。
不斷地重復閃爍藍色兩次*。	無線連線程序進行中。
閃爍藍色一次*。	無線連線已建立，可進行按鈕操作。
*電池的電量即將耗盡時，遙控器的操作指示燈會亮起紅色。	

顯示視窗自動關閉

- ✳ 您可避免顯示視窗關閉，或將預設設定變更為其他定时器間隔。按住BACK/HOME並選擇☰Settings – “Common Settings” – “Screen Off Timer”，然後選擇“No Auto Screen Off”、“15sec”、“30sec”、“1min”、“3min”或“5min”。

使用HOME選單

您可使用HOME選單執行各種操作，包括搜尋和播放錄製的檔案，以及變更IC錄音機的設定。



借助IC錄音機的BLUETOOTH*功能，即可使用智慧型手機操作IC錄音機 (錄音、變更錄音設定等)。

使用智慧型手機操作IC錄音機

您需要在智慧型手機上安裝REC Remote，並讓智慧型手機和IC錄音機進行配對。

配對是指讓Bluetooth裝置相互登錄並初次建立無線連線的程序。

若要使用REC Remote與IC錄音機進行配對，您必須使用最新版的REC Remote。若您的智慧型手機已安裝REC Remote，請務必升級為最新版本。



- 搜尋Google Play或App Store中的REC Remote，然後將其安裝至智慧型手機。**
- 在IC錄音機上，使用遙控器從HOME選單選取“REC Remote” – “Add Device (Pairing)”，然後依照螢幕上的指示開啟Bluetooth功能。**
- 在智慧型手機上，啟動REC Remote並從可用裝置清單選擇“ICD-TX800” (您的IC錄音機)。如需詳細說明，請參閱REC Remote的說明與智慧型手機隨附的手冊。**

現在便可透過智慧型手機操作IC錄音機。

- 附註**

在以下情況下，裝置登錄 (配對) 資訊會被清除。您必須重新配對裝置。

- 因執行某些作業 (例如：初始化) 而使IC錄音機、智慧型手機或兩部的設定皆重設為預設設定。

- 因經歷某些過程 (例如：裝置送修) 而使裝置登錄 (配對) 資訊被刪除。

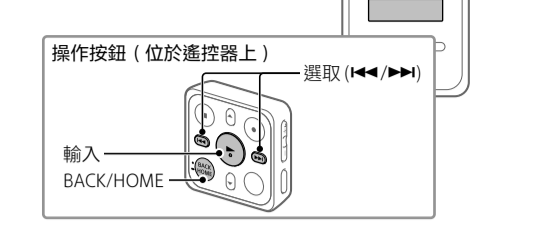
開啟或關閉IC錄音機的Bluetooth功能

- 從HOME選單選擇“REC Remote”–“Bluetooth ON/OFF”。**
- 若要關閉Bluetooth功能，請選擇“ON”。若要關閉Bluetooth功能，請選擇“OFF”。**

✳ 關閉Bluetooth功能可節省電池電量。

使用OPTION選單

您可使用OPTION選單執行各種操作，包括搜尋和播放錄製的檔案，以及變更IC錄音機的設定。



✳ 若要使用HOME選單，您必須操作遙控器。

- 按住BACK/HOME。**

HOME選單畫面隨即顯示在IC錄音機的顯示視窗上。

HOME選單項目會依下列順序顯示。

Music
Recorded Files
Record
REC Remote
Settings
Back to XX*

- 從以下選擇所需功能：**
 - Music**

您可選擇並播放已從電腦匯入的其中一個檔案。

若要搜尋音樂檔案，請選擇“All Songs”、“Albums”、“Artists”或“Folders”。

匯入檔案時，請務必匯入MUSIC資料夾。
 - Recorded Files**

您可選擇並播放透過IC錄音機錄製的其中一個檔案。

若要搜尋錄製檔案，請選擇“Latest Recording”、“Search by REC Date”或“Search by REC Scene”或“Folders”。
 - Record**

您可以顯示錄音待機畫面，並開始錄製。
 - REC Remote**

您可以顯示使用Bluetooth功能的REC Remote的選單畫面。

此外，您亦可開啟/關閉Bluetooth功能或進行裝置註冊 (配對)，以使用REC Remote。
 - Settings**

您可以顯示Settings選單畫面，以及變更IC錄音機的任何設定。
 - Back to XX***

您可以返回進入HOME選單畫面之前顯示的畫面。

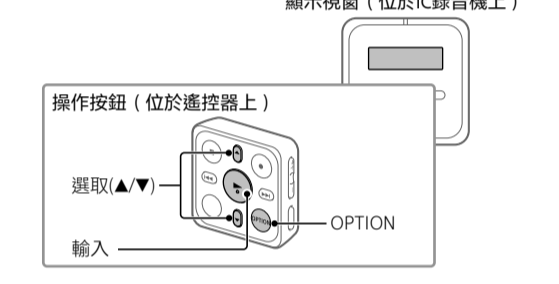
* “XX”代表您目前使用的功能。

✳ 按■STOP可返回進入HOME選單之前顯示的畫面。

使用OPTION選單

您可使用OPTION選單執行各種操作，包括變更IC錄音機的設定。

可用項目會隨著情況而有所差別。



- ✳ 若要使用OPTION選單，您必須操作遙控器。
- 從HOME選單選擇所需功能，然後再按OPTION。**
- 選擇您要變更設定的選單項目。**
- 選擇您要的設定選項。**

將IC錄音機上的檔案複製到電腦

您可以將IC錄音機上的檔案和資料夾複製到電腦上進行儲存。

- 請依照“充電”中的指示將IC錄音機連接到電腦。**
- 將您要複製的檔案或資料夾從“IC RECORDER”拖放到電腦的本機磁碟上。**
- 將IC錄音機自電腦中斷。**

安裝Sound Organizer 2

在電腦上安裝Sound Organizer。Sound Organizer可讓您在IC錄音機和電腦之間交換檔案。音樂檔案CD和其他媒體匯入的歌曲、MP3，和其他輸入入電腦的音訊檔案亦可在IC錄音機上播放或傳輸到IC錄音機。

- 附註**
 - Sound Organizer僅與Windows電腦相容，與Mac並不相容。
 - 本IC錄音機僅相容於Sound Organizer 2。
 - 如果您將內建記憶體格式化，儲存的所有資料都會遭到刪除。(Sound Organizer軟體也會遭到刪除。)

- ✳ 安裝Sound Organizer時，請登入具有系統管理員權限的帳戶。
- 安裝程序視Windows版本而定。下列程序以Windows 7為例。

- 請依照“充電”中的指示將IC錄音機連接到電腦。**
- 確定電腦成功偵測到IC錄音機。**

當IC錄音機連接到電腦時，“Connecting”會出現並持續顯示IC錄音機的顯示視窗。
- 前往[開始]功能表、按一下[電腦]，然後按兩下[IC RECORDER] – [FOR WINDOWS]。**
- 按兩下[SoundOrganizer_V2001] (或[SoundOrganizer_V2001.exe])。**

按照電腦的螢幕指示操作。
- 確定接受授權合約的條款之後，選擇[I accept the terms in the license agreement]，然後按一下[Next]。**
- 當[Setup Type]視窗出現時，請選擇[Standard]或[Custom]，然後按一下[Next]。**

依照畫面上的指示進行，然後在選擇[Custom]時進行安裝設定。
- 當[Ready to Install the Program]視窗出現時，按一下[Install]。**

安裝開始。
- 當[Sound Organizer has been installed successfully]視窗出現時，按一下[Launch Sound Organizer Now]，然後按一下[Finish]。**

- 附註**

安裝Sound Organizer後，可能需要重新啟動電腦。

更換遙控器電池

遙控器的指示燈亮起紅色時，表示電池電量即將耗盡。請依照以下步驟更換電池。務必使用CR2032鈕扣型鋰電池進行更換。



- 將遙控器翻至背面。**
- 將凸片 (A) 推向溝槽 (B) 並扣住，然後將指甲插入溝槽 (B)，拉出電池盒。**
- 取出電池。**
- 將新電池的+面朝上，裝入新電池。**
- 將電池盒裝回遙控器。**
- 按遙控器背面的RESET按鈕。**
- 按遙控器的任意按鈕 (遙控器的操作指示燈會快速交替閃爍藍色和紅色) 以開啟電源，然後開啟IC錄音機的電源。**

遙控器的操作指示燈停止閃爍時，即可操作遙控器。

事先注意事項

- 有關電源**
 - IC錄音機
 - DC 3.7V：內建充電式電池
 - DC 5.0V：使用USB充電時
 - 額定電流消耗：500mA
 - 遙控器
 - DC 3V：CR2032 (鈕扣型鋰電池)

- 有關安全**
 - 駕車、騎車或操作任何機械車輛時不要操作本機。

- 有關操作**
 - 不要讓本機靠近熱源或放置於陽光直射、灰塵很多或有機械振動的方地方。

- 假如有任何固體或液體落入本機，在進一步操作之前，請先取出電池並請合格的人員檢查。
- 使用IC錄音機時，務必遵守以下注意事項，以免造成機殼變形或IC錄音機故障。

- 請勿在IC錄音機置於後口袋時坐下。
- 不要將耳機線纏繞的IC錄音機放進袋子裡，然後使袋子受到強力碰撞。
- 請小心不要讓水潑灑到機身。本機並不防水。尤其請特別注意下列情況。
 - 當將本機放在口袋中並前往浴室等地時。
 - 當下水後，本機可能會掉入水中而弄溼。
 - 當在本機機殼溼於雨水、雪或蒸氣的環境中使用本機時，或在溼漉的狀況下，如果以溼漉的雙手碰觸本機，或將本機放在潮濕衣物的口袋內，本機將會弄溼。
 - 使用本機時音質很可能會影響您的聽力。
 - 為確保交通安全，請勿在開車或騎腳踏車時使用本機。
- 如果在四周空氣非常乾燥的時候使用耳機，可能會感到耳聾靜。

- 這不是因為耳機故障所造成的，而是因為的體內累積了太多靜電。可以藉由穿脫避免產生靜電的非合成材質衣物來減少靜電。
- 檔案管理必須使用少量的內建記憶體。因此這些記憶體無法以使用者儲存之用。
- 在以IC錄音機將內建記憶體格式化的情況下。
- 錄音檔的預設設定。
- 電池使用時間僅供參考。電池使用時間也會因為使用條件和環境溫度等因素而有差異。

規格

容量 (使用者可用容量)*1*2)

16 GB (約12.80 GB + 13743895347位元組)

最長錄製時間*3 (內建記憶體)

所有資料夾的最長錄製時間如下。				
LPCM 44.1 kHz/16 bit (STEREO)				21小時35分鐘
MP3 192 kbps (STEREO)				159小時
MP3 128 kbps (STEREO)				238小時
MP3 48 kbps (MONO)				636小時

電池續航力				
●IC錄音機 (使用一個內建充電式電池)				
REC Mode	錄製	使用耳機播放	使用REC Remote錄音	
LPCM 44.1kHz/16bit	約12小時	約10小時	約6小時	
MP3 192 kbps	約15小時	約12小時	約6小時	
MP3 128 kbps	約15小時	約12小時	約6小時	
MP3 48 kbps	約15小時	約12小時	約6小時	

●遙控器 (安裝一個鈕扣型鋰電池) 約1年*4

<IC錄音機>

●內建充電式鋰離子電池

●USB電源 (經由隨附USB電纜從電腦供電)

<遙控器>

●鈕扣型鋰電池

額定電壓

<IC錄音機>

●鋰離子電池：3.7 V

●USB電源：5 V

<遙控器>

●鈕扣型鋰電池：3V

尺寸 (寬/高/深) (不包括突出部分和控制按鈕)

●IC錄音機
約 38.0 mm × 38.0 mm × 13.7 mm

●遙控器
約 38.0 mm × 38.0 mm × 10.8 mm

重量

●IC錄音機
約22 g

●遙控器
約15 g (包含一個鈕扣型電池)

溫度/濕度

操作溫度	5℃ – 35℃
操作濕度	25% – 75%
儲存溫度	–10℃ – +45℃
儲存濕度	25% – 75%

- *1 檔案管理必須使用少量的內建記憶體。因此這些記憶體無法以使用者儲存之用。
- *2 在以IC錄音機將內建記憶體格式化的情況下。
- *3 錄音檔的預設設定。
- *4 電池使用時間僅供參考。電池使用時間也會因為使用條件和環境溫度等因素而有差異。

Bluetooth規格

- 通訊系統：Bluetooth規格版本 4.0
- 最大通訊範圍：視線範圍約10公尺*
- 頻段：2.4 GHz頻段 (2,400GHz – 2,4835 GHz)

- *範圍可能會因通訊環境而有所不同。