

IC Recorder

Operating Instructions



ICD-TX800

4-699-321-31(1)



Refer to the Help Guide

This is the Operating Instructions, which provides you with instructions on the basic operations of the IC recorder. The Help Guide is an online manual. Refer to the Help Guide when you would like to know further details, operations and possible solutions when a problem occurs.

http://rd1.sony.net/help/icd/t80/h_zz/

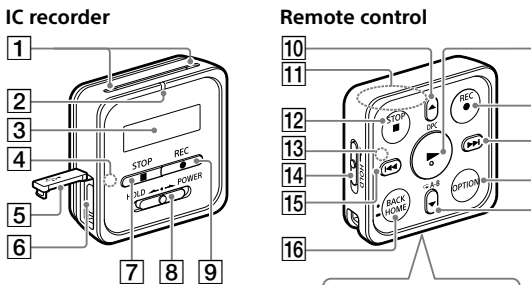


Check the supplied items

- IC Recorder (1)
- Remote control* (1)
- Stereo headphones (1)
- Dedicated headphone cable (1)
- USB cable (1)
- Carrying case (1)
- Operating Instructions (this sheet)
- Warranty card
- Application Software, Sound Organizer 2 (Installer file stored in the built-in memory so that you can install it to your computer.)

* A button type lithium battery is already installed.

Parts and controls



Your IC recorder has a built-in clip on its back. You can hook it onto something, such as the hem of a pocket.

- Built-in microphones
- Operation indicator
- Display window
- Bluetooth indicator¹⁾
- USB connector cover
- USB/Headphone connector (inside the USB connector cover)
- STOP button
- HOLD+POWER switch²⁾
- REC button
- ▲/DPC (Digital Pitch Control) button
- Built-in antenna³⁾
- STOP button
- Operation indicator
- HOLD switch
- ◀ (review/fast backward) button
- ▶ BACK/≡ HOME button⁴⁾
- ▶ (play/enter) button⁵⁾
- REC button
- ▶▶▶ (cue/fast forward) button
- OPTION button
- ▼/◁ A-B (repeat A-B) button
- VOL -/+ (volume -/+) button⁶⁾
- T-MARK (track mark) button
- RESET button⁶⁾
- Strap hole (No strap is supplied with your IC recorder.)
- Battery case⁷⁾

¹⁾ The indicator changes in color or flashes to indicate the status of the Bluetooth function or the Bluetooth pairing (device registration).

²⁾ Sliding the HOLD+POWER switch to "POWER" and holding it for 8 seconds or longer restarts your IC recorder. Before restarting the IC recorder, make sure the operation indicator is unlit. For detailed instructions, refer to the Help Guide.

³⁾ When using the remote control, do not cover the built-in antenna, for example with your hand, so as not to disturb the wireless connection with the IC recorder.

⁴⁾ Press this button **once** to display the previous screen. Press and hold it to display the HOME menu screen.

⁵⁾ There is a tactile dot on the ▶ (play/enter) button and next to "+" on the VOL -/+ (volume -/+) button.

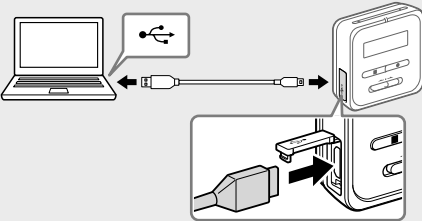
⁶⁾ Press this button when the remote control seems not working.

⁷⁾ A button type lithium battery is already installed.

✎ Your IC recorder is not equipped with built-in speakers.

Let's try out your new IC recorder

Charge

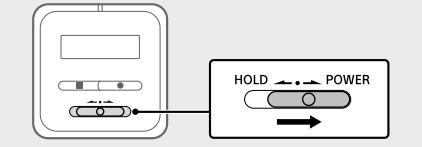


- Charge the IC recorder.** Using the supplied USB cable, connect the USB/Headphone connector inside the USB connector cover to a USB port of a running computer. Charging starts. When the battery is fully charged, the battery indicator will indicate "충전".

- Disconnect the IC recorder.** Make sure that the message "액세스 중" is no longer on the display window. Then refer to the Help Guide to remove the IC recorder safely.

Power on

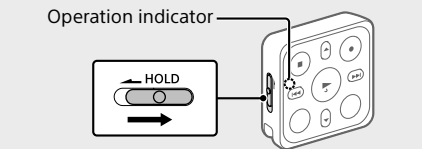
IC recorder



Slide and hold the HOLD+POWER switch on the IC recorder in the direction toward "POWER" until the window display appears.

To power off, slide the HOLD+POWER switch on the IC recorder to "POWER" and hold it until "전원을 끕니다." appears on the display window.

Remote control



Slide the HOLD switch away from "HOLD." To power on the remote control, press any one of the buttons on the remote control. When the operation indicator on the remote control stops flashing, operations with the remote control are available.

The remote control is not equipped with the power button. It automatically powers off in the following cases:

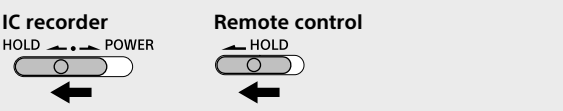
- if the wireless connection is not established with the IC recorder and you leave the remote control unused for about 5 minutes
- if the wireless connection is established with the IC recorder and
 - you power off the IC recorder
 - you leave the remote control unused for about 2 hours

To use the remote control for operations after it powers off, follow the above procedure to power on the remote control, and then press your desired button on the remote control once again.

To prevent unintentional operations (HOLD)

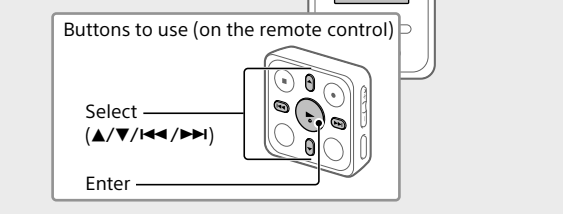
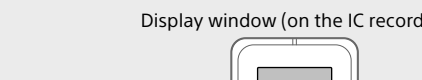
The IC recorder and the remote control are each equipped with the switch to hold the operation.

Slide the HOLD+POWER switch on the IC recorder or the HOLD switch on the remote control in the direction of "HOLD."



✎ To release the IC recorder or the remote control from the Hold status, slide the HOLD+POWER switch towards the center or the HOLD switch away from "HOLD," respectively.

Initial settings



When you power on your IC recorder for the first time, the "초기 설정 구성하기" screen appears on the display window of the IC recorder. Use the remote control to make initial settings, such as selecting the display language, setting the clock, and turning on/off the beep sound.

- Slide the HOLD switch away from "HOLD" to release the remote control from the HOLD status.** Remove the yellow label from the back of the remote control when you use it for the first time.

- When "초기 설정 구성하기" screen appears, press any button on the remote control.** If the operation indicator on the remote control is flashing, wait until it stops flashing before proceeding to the next step.

- Press ▶ to start the initial settings.**
 - 초기 설정 구성하기

- Select the display language.** You can select from the following languages: 한국어 (Korean)*, English
 - 한국어
 - 영어

- Set the current year, month, day, hour, and minute.**
 - 2017년 1 m 1 일
 - 12 : 00 AM

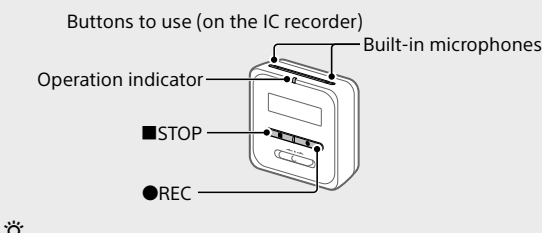
✎ To go back to the previous clock setting item, press BACK/HOME.

- Select "다음."**
 - 2017년 04월 10일
 - 12:00 AM
 - 다음 >
- Select "예" or "아니오" to turn on or off the beep sound.** When the initial settings finish, the completion message and then the HOME menu screen appears.
 - 신용사서
 - 예 아니오

✎ **Notes**

- You can hear the beep sound only through the headphones connected to your IC recorder.
- You can change any of the initial settings at any time later. For detailed instructions, refer to the Help Guide.

Record



- To start recording, you can operate either the IC recorder or the remote control.
- Before you start recording, make sure that the HOLD status is released.
- You can select an operation scene for each situation by selecting "녹음환경 선택" in the OPTION menu with the remote control.

- Turn the IC recorder so that its built-in microphones point in the direction of the recording source.**

- Press ●REC.** Make sure that the operation indicator on the IC recorder lights in red, indicating that recording has started.

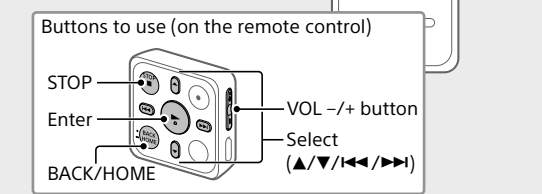
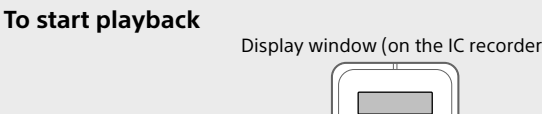
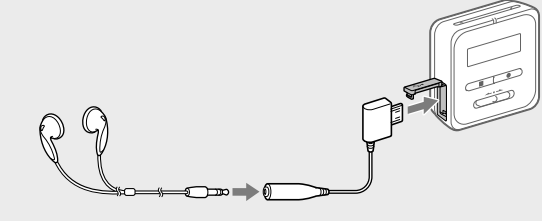
- Press ■STOP to stop recording.** Recording stops and "저장 중..." appears on the display window.

Listen

Your IC recorder is not equipped with a built-in speaker. For audio listening, you need to connect the stereo headphones (supplied) to the IC recorder with the dedicated headphone cable (supplied). For playback operations, use the remote control.

Listening preparation

Connect the stereo headphones to the USB/Headphone connector on the IC recorder with the dedicated headphone cable.



- While watching the display window on the IC recorder, operate the remote control to select "녹음원 파일" from the HOME menu.**

- Select "최근 녹음," "녹음 날짜로 검색," "녹음환경으로 검색," or "폴더."

- Select your desired file.** Playback starts.
 - 171010_1080
 - 04/04_12:00:00

- Press VOL + or VOL - to adjust the volume.**

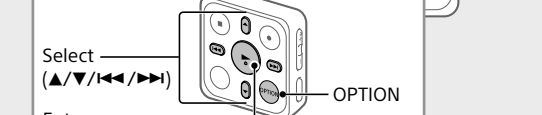
- Press ■STOP to stop playback.**

✎ Right after you stopped recording, you can press ▶ to play the file you have just recorded.

To add a track mark

You can add a track mark at a point at which you want to divide a file later or locate during playback. You can add a maximum of 98 track marks to each file. You can also add track marks during recording.

Delete



- ✎ To delete a file, you need to operate the remote control.

✎ **Note**

Once a file is deleted, you cannot restore it.

- While watching the display window on the IC recorder, operate the remote control to select the file you want to delete from the list of recorded files or play back the file you want to delete.**

- Select "파일 삭제" from the OPTION menu.
 - 삭제할까요?

- Press ▶ to start the initial settings.**
 - 삭제할까요?
 - 예 아니오

- Select "예."**
 - 171010_1080
 - 04/04_12:00:00
 - 삭제할까요?
 - 예 아니오

- Set the current year, month, day, hour, and minute.**
 - 2017년 1 m 1 일
 - 12 : 00 AM

✎ To go back to the previous clock setting item, press BACK/HOME.

- Select "다음."**
 - 2017년 04월 10일
 - 12:00 AM
 - 다음 >

- Select "예" or "아니오" to turn on or off the beep sound.** When the initial settings finish, the completion message and then the HOME menu screen appears.
 - 신용사서
 - 예 아니오

✎ **Notes**

- You can hear the beep sound only through the headphones connected to your IC recorder.
- You can change any of the initial settings at any time later. For detailed instructions, refer to the Help Guide.

The display window turns off automatically

The "회면 플러티머" setting on your IC recorder is set to "30초" by default to save battery power. If you leave both the IC recorder and the remote control unused for 30 seconds, the display window will turn off, but you can still perform any button operations. To turn the display window back on, press BACK/HOME or slide the HOLD+POWER switch on the IC recorder to "HOLD" and then slide it back to the original (center) position.

✎ You can keep the display window from turning off or change the default setting to another timer interval. Press and hold BACK/HOME and select "■ 설정" - "공용 설정" - "회면 플러티머," and then select "자동 회면 끄지 않음," "15초," "30초," "1분," "3분," or "5분."

Notes on the operations

- When the button operations of the remote control do not work, check if
 - the IC recorder is powered.
 - By default, the IC recorder will automatically power off if you leave it unused for 30 minutes.
 - the remote control is released from the HOLD status.
 - the wireless connection process with the IC recorder is in progress.

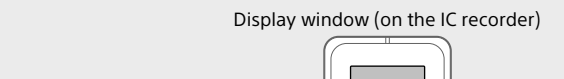
The operation indicator on the remote control flashes while the wireless connection is being established.

- You can check the indication of the operation indicator on the remote control for the status of the remote control.

Indication of the operation indicator	Status of the remote control
Flashes twice in blue*. ● ●	Powered on.
Lights in blue for 2 seconds. ■■■■	Powered off.
Flashes four times in blue*. ● ● ● ●	Resetting of the remote control is complete.
Stays lit in red. ■■■■■■■■■■	Not operable due to battery shortage.
Flashes alternately in blue and red. ● ● ● ● ● ● ● ●	Device registration process is in progress.
Flashes twice in blue* repeatedly. ● ● ● ● ● ●	Wireless connection process is in progress.
Flashes once in blue*. ●	Wireless connection is established and button operations are available.

* When the battery is running out of power, the operation indicator on the remote control lights in red.

Operations with the smartphone (REC Remote)



With the BLUETOOTH® function of your IC recorder, you can operate your IC recorder (recording, changing the recording settings, etc.) using a smartphone.

To operate your IC recorder using a smartphone

You need to install REC Remote on the smartphone and make a pairing between the smartphone and your IC recorder. Pairing means having Bluetooth devices registered with each other to establish a wireless connection for the first time. To make a pairing with the IC recorder using REC Remote, you need the latest version of REC Remote. If your smartphone has REC Remote already installed, be sure to upgrade it to the latest version.



- Search Google Play or App Store for REC Remote and install it on the smartphone.**

- On the IC recorder, select "REC Remote" - "장치 추가 (패어링)" from the HOME menu with the remote control and follow the on-screen instruction to turn on the Bluetooth function.**

- On the smartphone, start REC Remote and select "ICD-TX800" (your IC recorder) from the available device list. For detailed instructions, refer to the help of REC Remote and the manual supplied with the smartphone.**

Now you can use the smartphone for IC recorder operations.

✎ **Note**

The device registration (pairing) information is cleared in the following cases. You need to pair the devices once again.

- The settings on the IC recorder, the smartphone, or both devices are reset to the default settings, for example, due to initialization.
- The device registration (pairing) information is deleted, for example, during the course of a repair service.

To turn on or off the Bluetooth function of your IC recorder

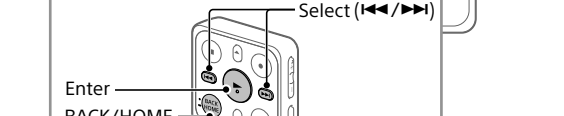
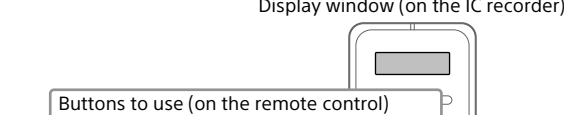
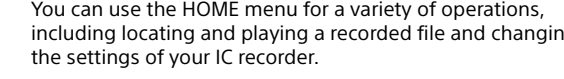
- Select "REC Remote" - "Bluetooth 켜기/끄기" from the HOME menu.**

- To turn on the Bluetooth function, select "켜기" To turn it off, select "끄기."**

✎ Turning off the Bluetooth function conserves battery power.

Using the HOME menu

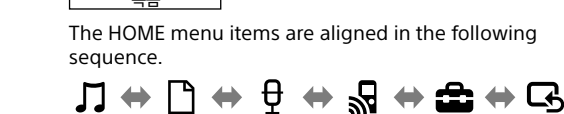
You can use the HOME menu for a variety of operations, including locating and playing a recorded file and changing the settings of your IC recorder.



✎ To use the HOME menu, you need to operate the remote control.

- Press and hold BACK/HOME.** The HOME menu screen appears on the display window of the IC recorder.
 - 음악
 - 녹음원 파일
 - 녹음
 - REC Remote
 - 설정
 - XX+ 으로

The HOME menu items are aligned in the following sequence.



✎ You can keep the display window from turning off or change the default setting to another timer interval. Press and hold BACK/HOME and select "■ 설정" - "공용 설정" - "회면 플러티머," and then select "자동 회면 끄지 않음," "15초," "30초," "1분," "3분," or "5분."

- Select your desired function from the following:**

✎ **음악**
You can select and play one of the files you have imported from a computer. To locate a music file, select "모든 곡," "앨범," "아티스트" or "폴더." When importing files, be sure to import them into the MUSIC folder.

✎ **녹음원 파일**
You can select and play one of the files you have recorded with your IC recorder. To locate a recorded file, select "최근 녹음," "녹음 날짜로 검색," "녹음환경으로 검색," or "폴더."

✎ **녹음**
You can display the record standby screen, and then start recording.

✎ **REC Remote**
You can display the menu screen for REC Remote that uses the Bluetooth function. Additionally, you can turn on/off the Bluetooth function or make device registration (pairing) for using REC Remote.

✎ **설정**
You can display the Settings menu screen and change various settings on the IC recorder.

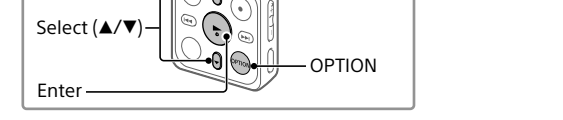
✎ **XX+ 으로**
You can go back to the screen that was displayed before the HOME menu screen.

* The function you are currently using is displayed in "XX."

✎ Press ■STOP to return to the screen displayed before you entered the HOME menu.

Using the OPTION menu

You can use the OPTION menu to perform a variety of functions, including changing the settings of your IC recorder. The available items differ depending on the situation.



✎ To use the OPTION menu, you need to operate the remote control.

- Select your desired function from the HOME menu, and then press OPTION.**

- Select the menu item for which you want to change the setting.**

- Select your desired setting option.**

✎ To use the OPTION menu, you need to operate the remote control.

- Select your desired function from the HOME menu, and then press OPTION.**

- Select the menu item for which you want to change the setting.**

- Select your desired setting option.**

✎ To use the OPTION menu, you need to operate the remote control.

- Select your desired function from the HOME menu, and then press OPTION.**

- Select the menu item for which you want to change the setting.**

- Select your desired setting option.**

✎ To use the OPTION menu, you need to operate the remote control.

- Select your desired function from the HOME menu, and then press OPTION.**

- Select the menu item for which you want to change the setting.**

- Select your desired setting option.**

✎ To use the OPTION menu, you need to operate the remote control.

- Select your desired function from the HOME menu, and then press OPTION.**

- Select the menu item for which you want to change the setting.**

- Select your desired setting option.**

✎ To use the OPTION menu, you need to operate the remote control.

- Select your desired function from the HOME menu, and then press OPTION.**

- Select the menu item for which you want to change the setting.**

- Select your desired setting option.**

✎ To use the OPTION menu, you need to operate the remote control.

- Select your desired function from the HOME menu, and then press OPTION.**

- Select the menu item for which you want to change the setting.**

- Select your desired setting option.**

✎ To use the OPTION menu, you need to operate the remote control.

- Select your desired function from the HOME menu, and then press OPTION.**

- Select the menu item for which you want to change the setting.**

- Select your desired setting option.**

✎ To use the OPTION menu, you need to operate the remote control.

- Select your desired function from the HOME menu, and then press OPTION.**

- Select the menu item for which you want to change the setting.**

- Select your desired setting option.**

✎ To use the OPTION menu, you need to operate the remote control.

- Push and hold the tab (A) toward the groove (B), insert your fingernail into the groove (B), and then pull out the battery case.**

- Remove the battery.**

