

Personal Audio System

Operating Instructions



SRS-XB2 * 4 5 8 7 0 4 4 1 * (1)

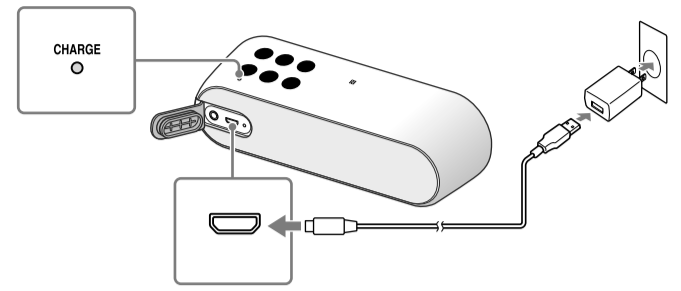
Help Guide
(web document for a PC/smartphone)
Explains detail about the unit, BLUETOOTH connection method, etc.



http://rd1.sony.net/help/speaker/srs-xb2/h_zz/

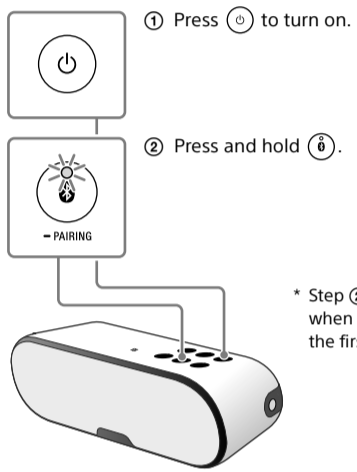
Charging the unit

Charge the battery for the first time.



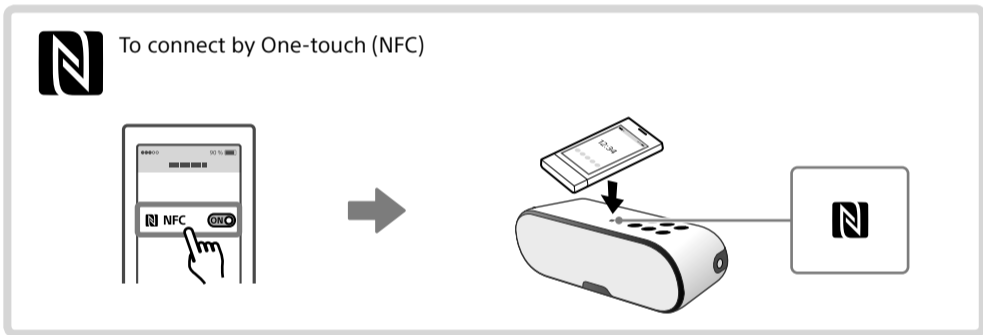
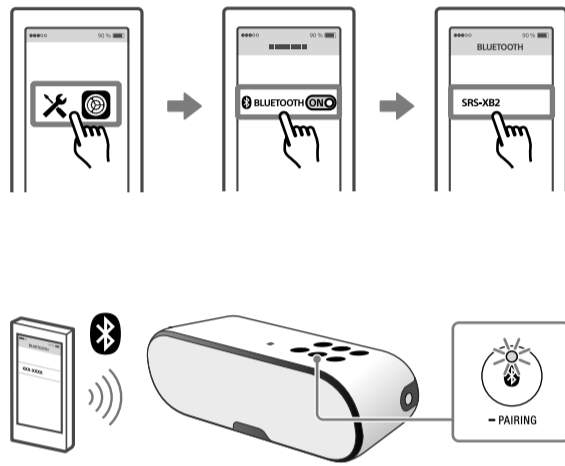
BLUETOOTH connection

1 Set the unit to the pairing mode.



* Step 2 is unnecessary when using the unit for the first time.

2 Pairing the unit to your smartphone/iPhone.

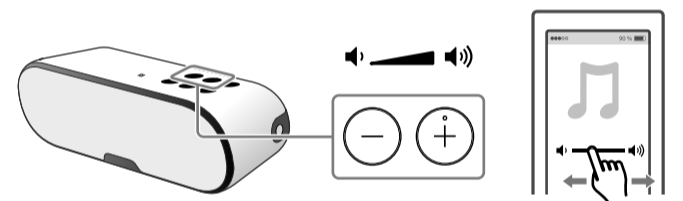


Listening

Start playback.

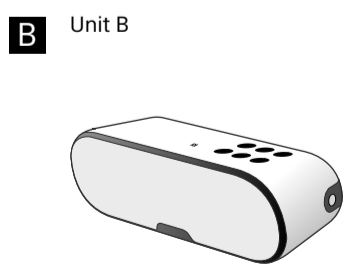
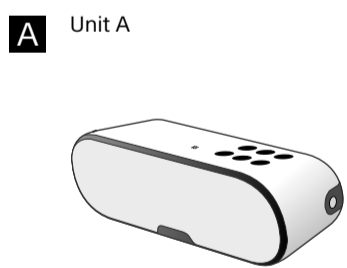


Adjust the volume.

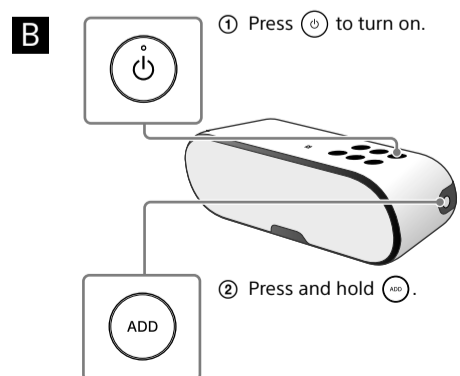
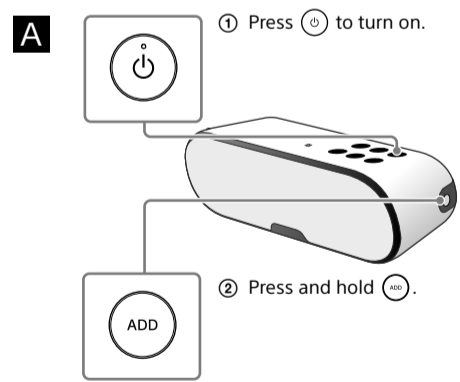


Listening with two units (Speaker Add function - double mode/stereo mode)

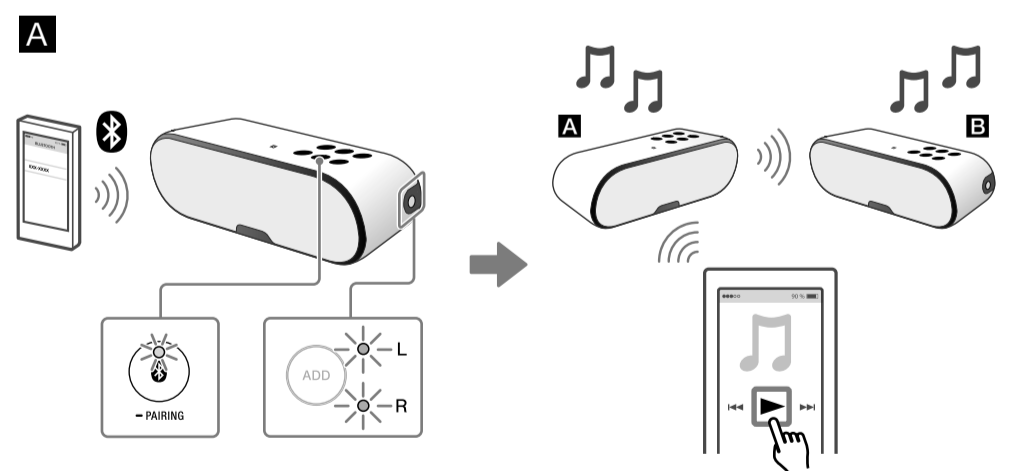
1 Preparation for two SRS-XB2 units.



2 Set unit A and then B.



3 Connect your smartphone/iPhone to unit A with the Bluetooth indicator lit.



* The default is double mode.

To switch double mode/stereo mode (Lch/Rch)

