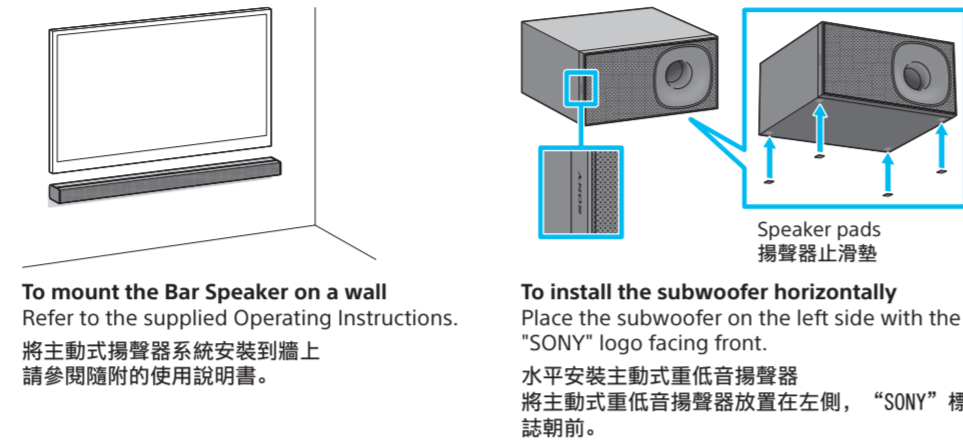
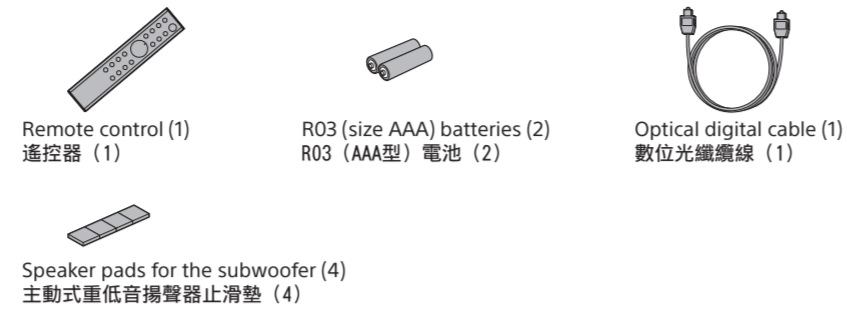


GB
CT

Supplied accessories
提供的附件



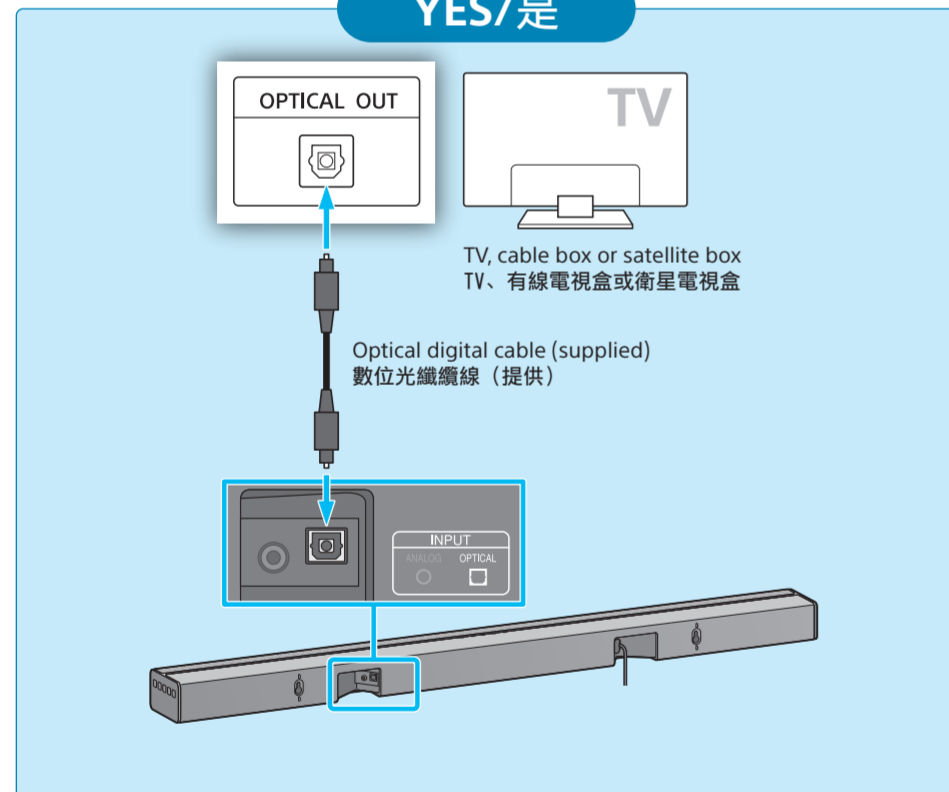
To mount the Bar Speaker on a wall
Refer to the supplied Operating Instructions.
將主動式揚聲器系統安裝到牆上
請參閱隨附的使用說明書。

To install the subwoofer horizontally
Place the subwoofer on the left side with the "SONY" logo facing front.
水平安裝主動式重低音揚聲器
將主動式重低音揚聲器放置在左側，“SONY”標誌朝前。

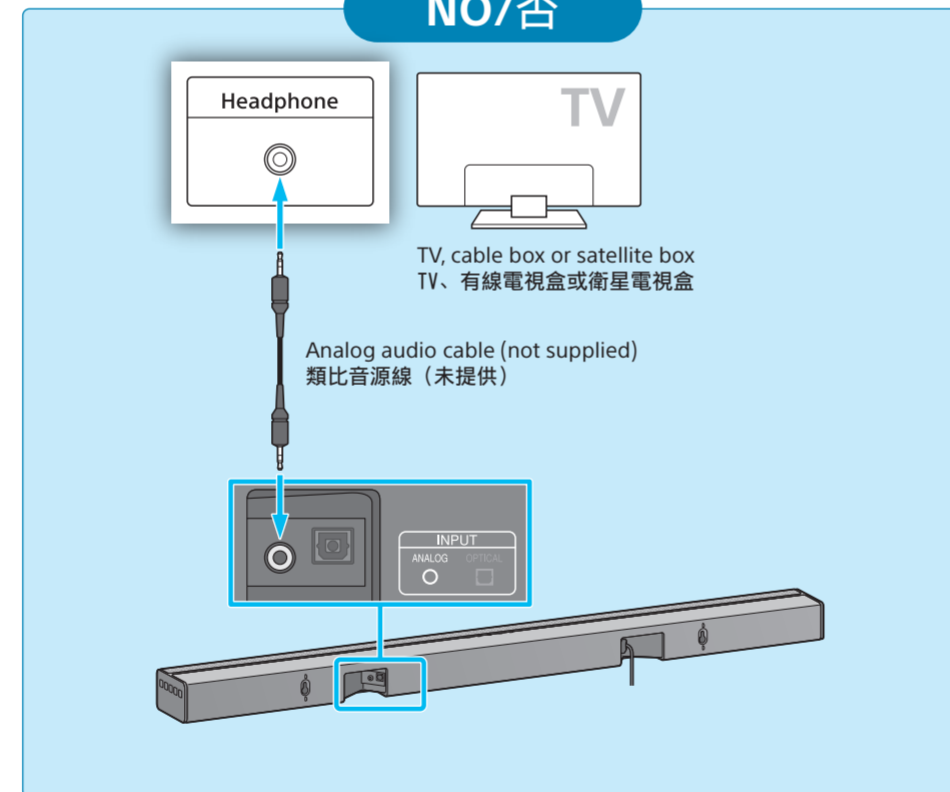
1 Connecting with a TV
連接TV

Is there an optical digital jack on your TV?
您的TV上是否有數位光纖插孔?

YES/是

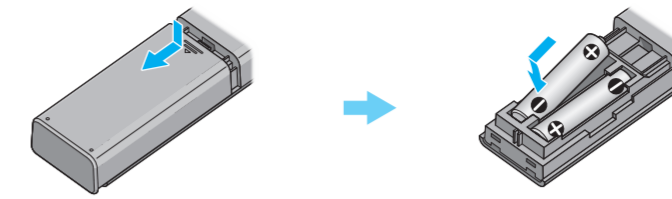


NO/否

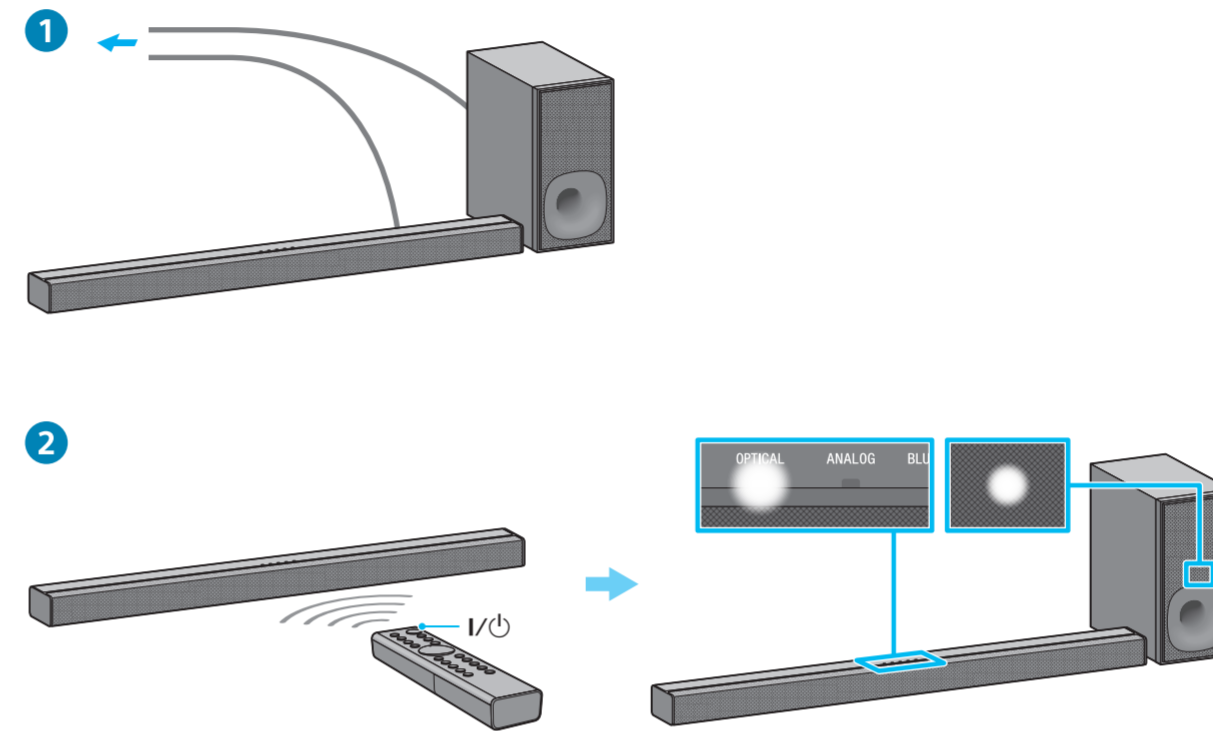


Note/註
If the TV's headphone jack also serves as an audio output jack, check the TV's audio output settings. For details, refer to the TV's operating instructions.
如果TV的耳機插孔也做為音訊輸出插孔，請檢查TV的音訊輸出設定。詳細資訊，請參閱TV的使用說明書。

2 Setting up the remote control
設定遙控器



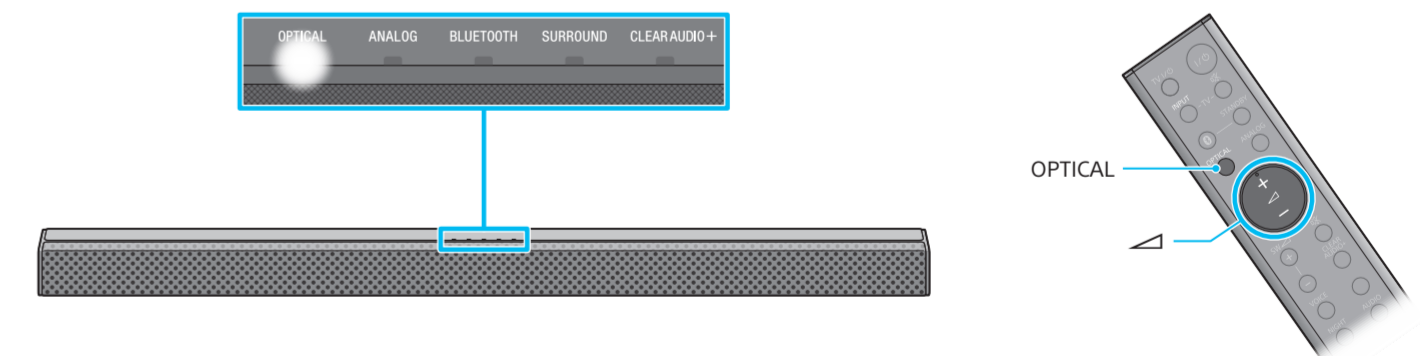
3 Turning on the system
開啟系統



1 Connect the AC power cords (mains leads).
2 Press the I/ON (on/standby) button.
An input indicator lights up.
Confirm that the on/standby indicator of the subwoofer is lit in green. When the indicator turns on, wireless connection of the Bar Speaker and the subwoofer is completed. If it does not turn on, the wireless transmission is not activated. Refer to "Subwoofer wireless sound" of "Troubleshooting" in the supplied Operating Instructions.

1 接上交流電源線。
2 按下 I/ON (開/待機) 按鈕。
輸入指示燈亮起。
確認主動式重低音揚聲器的開/待機指示燈亮綠燈。指示燈亮起時，代表完成主動式揚聲器系統和主動式重低音揚聲器的無線連線。若指示燈未亮起，代表無線傳輸未啟動。請參閱隨附使用說明書中“疑難排除”的“主動式重低音揚聲器無線聲音”。

4 Listening to the sound
聆聽聲音



Press the OPTICAL button to turn on the OPTICAL indicator. Then, press the \sphericalangle (volume) button to adjust the volume.
If you connected your TV to the ANALOG jack in step 1, press the ANALOG button.

按下OPTICAL按鈕以開啟OPTICAL指示燈。然後按下 \sphericalangle (音量) 按鈕調整音量。
如果您在步驟1中將TV連接到ANALOG插孔，請按下ANALOG按鈕。

Setup completed! Enjoy!
設定完成! 盡情享受!

Please see the supplied Operating Instructions about the BLUETOOTH connection, and other functions.
請參閱隨附使用說明書中關於BLUETOOTH連線與其他功能的說明。

