

Let's try out your new IC recorder

IC Recorder Startup Guide



ICD-TX650

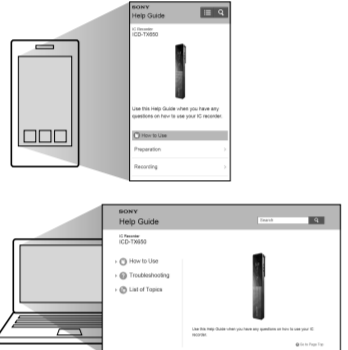
4-543-030-52(1)



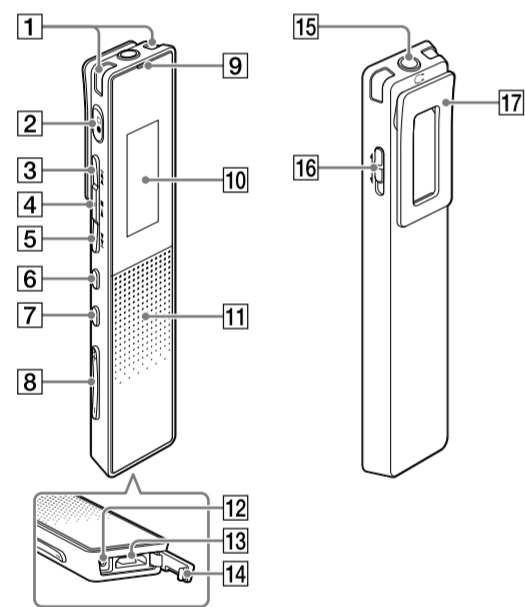
Refer to the Help Guide

This is the Startup Guide, which provides you with instructions on the basic operations of the IC recorder. The Help Guide is an online manual. Refer to the Help Guide when you would like to know further details, operations and possible solutions when a problem occurs.

http://rd1.sony.net/help/icd/t65/h_ce/



Parts and controls

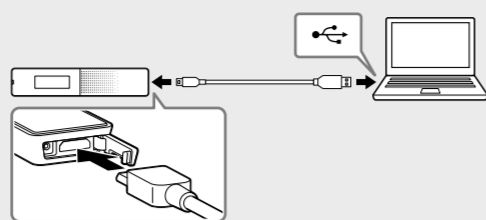


- 1 Built-in microphones (L/R)
- 2 (record/recording stop) button
- 3 (cue/fast forward) button
- 4 (play/enter/stop) button*1
- 5 (review/fast backward) button
- 6 OPTION button
- 7 BACK/HOME button
- 8 VOL (volume) +/- button*1
- 9 Operation indicator
- 10 Display window
- 11 Speaker*2
- 12 RESET button (inside the USB connector cover)
- 13 USB connector (inside the USB connector cover)
- 14 USB connector cover
- 15 (headphones) jack
- 16 POWER•HOLD switch
- 17 Clip

*1 These buttons have a tactile dot. Use it as a reference point for operations, or to identify each terminal.

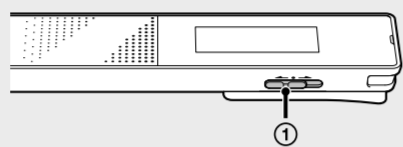
*2 The built-in speaker is for checking the recorded sound, so the volume is limited. If playback sound is not loud enough or is difficult to hear, use headphones.

Charge



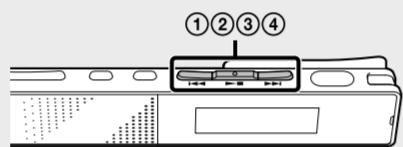
- 1 **Charge the IC recorder.**
Using the supplied USB cable, connect the USB connector inside the USB connector cover to a USB port of a running computer. Charging starts. When the battery is fully charged, the battery indicator will indicate "Full."
- 2 **Disconnect the IC recorder.**
Make sure that the operation indicator does not light. Then refer to the Help Guide to remove the IC recorder safely.

Power on



- 1 **Turn the power on.**
Slide and hold the POWER•HOLD switch in the direction of "POWER" until the window display appears.
- To turn the power off, slide and hold the POWER•HOLD switch in the direction of "POWER" until "Power Off" is displayed.
- To prevent unintentional operations (HOLD)**
- To release the IC recorder from the HOLD status, slide the POWER•HOLD switch towards the center.

Set the initial settings



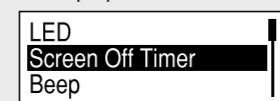
When you turn on the power for the first time, or when the clock has not been set, "Setting Date&Time" appears, and you can set the clock.

- 1 Press or to select "Next," and then press .
- Setting Date&Time
- Next Skip
- 2 Press or to change the number of the year, and then press to enter the number. Repeat this procedure to set month, day, hour, and minute in sequence.
- 2014 y 1 m 1 d
12 : 00 AM
- You can move the cursor to the previous item by pressing BACK/HOME.
- 3 Press or to select "Next," and then press .
- 2014y10m10d
10:00 AM
- The clock reflects the setting and the setting window for turning the beep sound on or off is displayed.
- 4 Press or to select "Yes" or "No," and then press .
- Use Beep?
- Yes No
- When you finish setting the beep, the HOME menu window is displayed.
- Record

- Note**
- If you do not press any buttons within 1 minute at initial settings, "Quit Initial Set-up?" or "Quit Beep Settings?" appears on the display window.
 - You can set the clock setting and beep sound setting later. For details, refer to the Help Guide of the IC recorder.

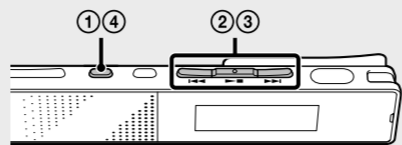
The display turns off automatically

Press BACK/HOME to turn on the display. The screen off timer is set to "Auto Screen Off" by default for saving battery power. If no operation is attempted for approximately 30 seconds in the stop mode and for approximately 10 seconds in the recording and playback modes, the display turns off automatically. You can perform a button operation, however, even while the display is off.



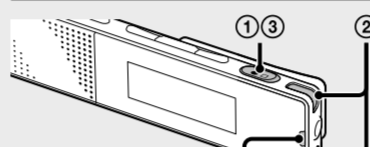
- Note**
- To change the settings, press and hold BACK/HOME and select "Settings" - "Common Settings" - "Screen Off Timer" - "No Auto Screen Off."

Select the menu language



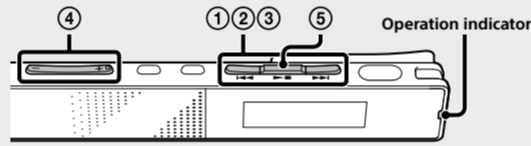
- 1 Press and hold BACK/HOME.
 - 2 Press or to select "Settings" - "Common Settings" - "Language," and then press .
 - 3 Press or to select the language that you want to use in the display window, and then press .
 - 4 Press and hold BACK/HOME to return to the HOME menu.
- You can select the following languages:
English*, Español (Spanish), Français (French)
* Default setting

Record



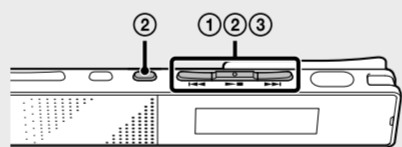
- Note**
- Before you start using the IC recorder, make sure that you slide the POWER•HOLD switch towards the center to release the HOLD status.
- 1 Press .
 - 2 Place the IC recorder so that the built-in microphones face the direction of the source to be recorded.
 - 3 Press again to stop recording. "Saving..." appears and the display returns to the recording stop mode window.
- By pressing after you stop recording, you can play back the file just recorded.

Listen

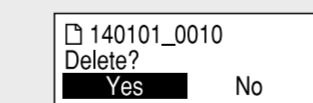


- 1 Press or to select "Recorded Files" from the HOME menu, and then press .
- 2 Press or to select the desired folder, and then press .
- 3 Press or to select the desired file, and then press .
- 4 Adjust the volume by pressing VOL +/-.
- 5 Press to stop playback.

Delete

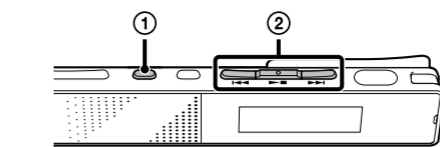


- Note**
- Once a file is deleted, you cannot restore it.
- 1 Select the file you want to delete from the list of recorded files or play back the file you want to delete.
 - 2 Press OPTION, press or to select "Delete a File," and then press .
 - 3 Press or to select "Yes," and then press .



Using the HOME menu

You can display the HOME menu to use each function by pressing and holding BACK/HOME. The HOME menu allows you to select a function, search your recorded files, or change the settings on the IC recorder.



- 1 Press and hold BACK/HOME. The HOME menu window appears.



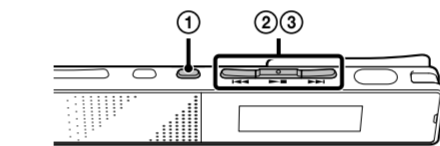
The HOME menu items are aligned in the following sequence.



- 2 Press or to select the function you want to use, and then press .
- You can select the functions listed below:
- | | | |
|--|-----------------------|--|
| | Podcast | You can select podcast files imported from a computer, and play them back. |
| | Music | You can select music files imported from a computer, and play them back. |
| | Recorded Files | You can select files recorded using the IC recorder, and play them back. The recorded files are stored in a FOLDER. |
| | Record | You can display the recording window. To start recording, press . |
| | Settings | You can display the Settings menu and change various settings on the IC recorder. |
| | Return to XX* | Select this item to return to the window displayed before entering the HOME menu. * The function you are currently using is displayed in "XX." |

Using the OPTION menu

You can display the OPTION menu by pressing OPTION. The OPTION menu items vary for each function of the IC recorder, and allow you to change various settings, etc.



- 1 Select the function you want to use from the HOME menu, press and then press OPTION. The OPTION menu items for the function you have selected are displayed.
 - 2 Press or to select the menu item for which you want to make setting, and then press .
 - 3 Press or to select the setting that you want to set, and then press .
- Note**
- About details of the setting items with each function, refer to the Help Guide.

Copying files from the IC recorder to your computer

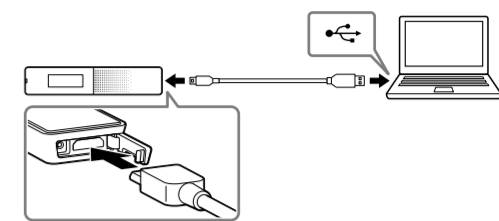
You can copy the files and folders from the IC recorder to your computer to store them.

- 1 Connect the IC recorder to your computer.
 - 2 Copy files or folders you want to transfer to your computer. Drag and drop the files or folders you want to copy from "IC RECORDER" to the local disk on your computer.
 - 3 Disconnect the IC recorder from your computer.
- To copy a file or folder (Drag and drop)**
-
- 1 Click and hold,
2 drag,
3 and then drop.
- Note**
- You can copy the Help Guide file stored in the built-in memory to your computer in the same way.

Installing Sound Organizer

Install Sound Organizer on your computer. Sound Organizer allows you to exchange files between the IC recorder and your computer. Songs imported from music CDs and other media, MP3 and other audio files imported to a computer, and podcasts can also be played and transferred to the IC recorder.

- Note**
- Sound Organizer is compatible with Windows computers only. It is not compatible with Mac.
 - When installing Sound Organizer, log in to an account with administrator privileges.
- 1 Using the supplied USB cable, connect the USB connector inside the USB connector cover to a USB port of a running computer.



- 2 Make sure the IC recorder has been recognized properly. While the IC recorder is connected to the computer, "Connecting" is displayed in the display window of the IC recorder.
- 3 Go to the [Start] menu, click [Computer], and then double-click [IC RECORDER] → [FOR WINDOWS].
- 4 Double-click [SoundOrganizer_V1601] (or [SoundOrganizer_V1601.exe]). Follow the instructions that appear on the screen.
- 5 Make sure that you accept the terms of the license agreement, select [I accept the terms in the license agreement], and then click [Next].
- 6 When the [Setup Type] window appears, select [Standard] or [Custom], and then click [Next]. Follow the instructions on the screen and set the installation settings when you select [Custom].
- 7 When the [Ready to Install the Program] window appears, click [Install]. The installation starts.
- 8 When the [Sound Organizer has been installed successfully.] window appears, check [Launch Sound Organizer Now], and then click [Finish].

- Note**
- You may need to restart your computer after installing Sound Organizer.
 - If you format the built-in memory, all data stored there will be deleted. (The Help Guide and the Sound Organizer software will also be deleted.)

Precautions

- On power**
- Operate the unit only on 3.7 V DC with the built-in rechargeable lithium-ion battery.
- On safety**
- Do not operate the unit while driving, cycling or operating any motorized vehicle.
- On handling**
- Do not leave the unit in a location near heat sources, or in a place subject to direct sunlight, excessive dust or mechanical shock.
 - Should any solid object or liquid fall into the unit, have the unit checked by qualified personnel before operating it any further.
 - When using your IC recorder, remember to follow the precautions below in order to avoid warping the cabinet or causing the IC recorder to malfunction.
 - Do not sit down with the IC recorder in your back pocket.
 - Do not put your IC recorder into a bag with the headphones/earphones cord wrapped around it and subject the bag to strong impact.

If you have any questions or problems concerning your unit, please consult your nearest Sony dealer.

WARNING

Do not expose the batteries (battery pack or batteries installed) to excessive heat such as sunshine, fire or the like for a long time.

Capacity (User available capacity)*1*2
16 GB (approx. 14.40 GB = 15,461,882,265 Byte)

*1 A small amount of the internal memory is used for file management and therefore not available for user storage.
*2 When the built-in memory is formatted with the IC recorder.

Dimensions (w/h/d) (not incl. projecting parts and controls) (JEITA)*3
Approx. 102.0 mm × 20.0 mm × 7.4 mm

Mass (JEITA)*3
Approx. 29 g
*3 Measured value by the standard of JEITA (Japan Electronics and Information Technology Industries Association)

Check the supplied items

- IC Recorder (1)
- Stereo headphones (1)
- USB cable (1)
- Carrying pouch (1)
- Startup Guide (this sheet)
- Application Software, Sound Organizer (Installer file stored in the built-in memory so that you can install it to your computer.)
- Help Guide (HTML file stored in the built-in memory so it can easily be copied to your computer.)

Optional accessories

- USB AC adaptor AC-UD20 (except Argentina)

Note

Depending on the country or region, some of the models or optional accessories are not available.

