

Quick Start Guide

How to Install the Bundled Software

How to Use the Player



NWZ-E443 / E444 / E445



* 4 1 5 4 4 1 1 1 1 * (2)

Supplied Items

Please check the items in the package.

- Headphones (1)
- USB cable (1)
- Attachment (1)

Use when connecting the player to the optional cradle, etc.



- Quick Start Guide (this manual) (1)
- Software (1)

The software is stored in the built-in flash memory of the player, and includes the following items:

- Content Transfer
- WALKMAN Guide
- Operation Guide, etc.

For details on how to install, refer to "How to Install the Bundled Software".

Before Connecting the Player to Your Computer

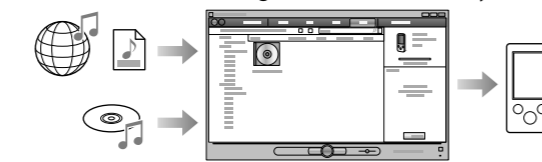
Make sure that the OS is Windows XP (Service Pack 2 or later) or Windows Vista (Service Pack 1), and the installed Windows Media Player version on your computer is 11.

For details about usage, or support on Windows Media Player, refer to the Windows Media Player information from the following web site:

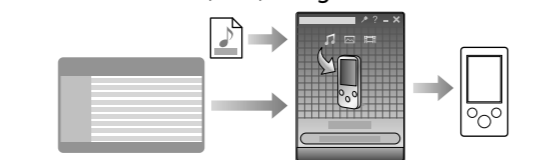
<http://www.support.microsoft.com/>

Three Ways to Transfer Music

A From CDs, etc., using Windows Media Player 11

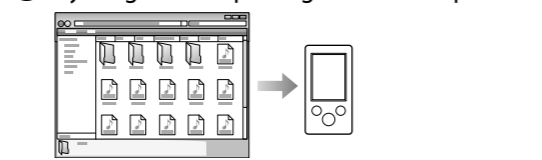


B From iTunes*1, etc., using Content Transfer



*1 Content Transfer supports data transfer from iTunes 8.1 to the player.

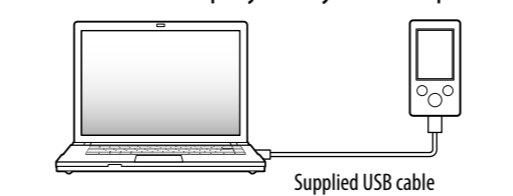
C By drag-and drop using Windows Explorer



For details on transferring music, videos or photos, refer to the Operation Guide. The Operation Guide can be readily viewed from the WALKMAN Guide.

How to Install the Bundled Software (Operation Guide included)

1 Connect the player to your computer.



2 Select the following order with the computer.

Select [start] - [My Computer] or [Computer] - [WALKMAN] - [Storage Media].

3 Double-click [Setup.exe].

The install wizard appears.

- When you execute [Setup.exe], the [Setup.exe] file and [Install] folder stored in the [Storage Media] folder of the player are copied to your computer for backup, and WALKMAN Guide and Content Transfer are installed to your computer.

4 Follow the on-screen instructions.

After executing [Setup.exe], the WALKMAN Guide shortcut appears on the desktop of your computer.

- With the player connected to your computer, when installation of bundled software is completed, Content Transfer starts automatically.

5 Double-click [WALKMAN Guide] on the desktop to start the WALKMAN Guide.

For details on transferring music, etc., refer to the Operation Guide included in the WALKMAN Guide.

Hint

- You can start the WALKMAN Guide and Content Transfer from the [start] menu (displayed by clicking [start]).
- If you delete the [Setup.exe] file and [Install] folder in the player by formatting the built-in flash memory of the player, copy this data from the [Backup] folder on the computer to your player. Then connecting the player to the computer to be installed, follow the above procedure from step 1 to install. The backup data is preserved in the following [C] drive on your computer by the default install setting.
C:\Program Files\Sony\WALKMAN Guide\NWZ-E440\Backup

What can you do with the WALKMAN Guide?

The WALKMAN Guide includes the following items:

- Operation Guide
The following contents can be viewed as a PDF file.
 - Details on how to use the player
 - How to use software to transfer content to the player
 - Troubleshooting

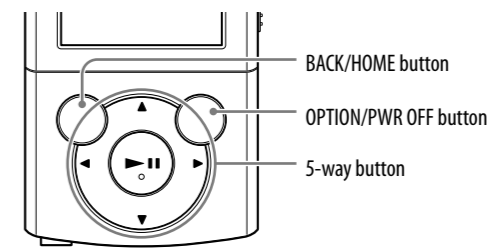
- Customer Registration Link
- Customer Support Link
- Other useful Links
Includes link information, etc., on the download site.

The bundled items differ depending on the country/region of purchase.

Hint

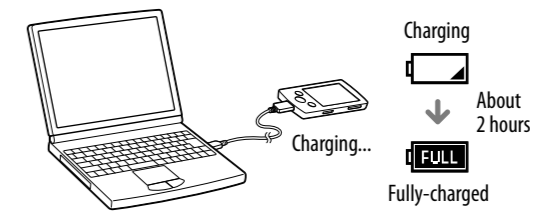
- After executing [Setup.exe] you can use the free space in the [Storage Media] folder more effectively by formatting the built-in flash memory of the player. To format the built-in flash memory of the player, see "To initialize (format) the player" on the backside.

How to Use the Player



Charging the Battery

The player's battery is recharged while the player is connected to a running computer.

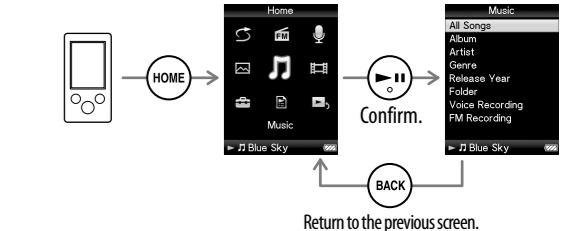


Turning the Player On and Off

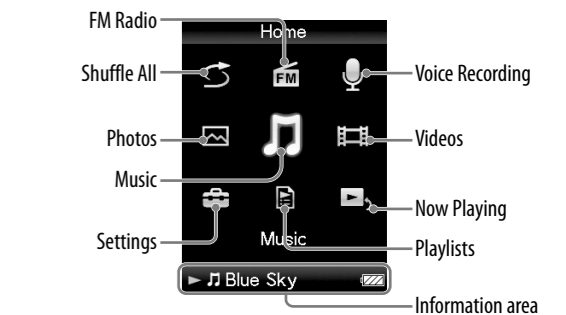
To turn on	Press any button.
To turn off	Press and hold the OPTION/PWR OFF button.

How to use the Home menu

The [Home] menu appears when you press and hold the BACK/HOME button. The [Home] menu is the starting point to play audio, search for songs, changing settings, etc. From the [Home] menu, you can select the desired item on the screen by using the 5-way button.

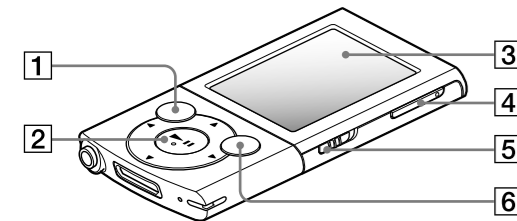


Home menu



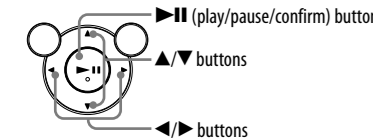
Parts and Controls

Front



1 BACK/HOME button

2 5-way button*1

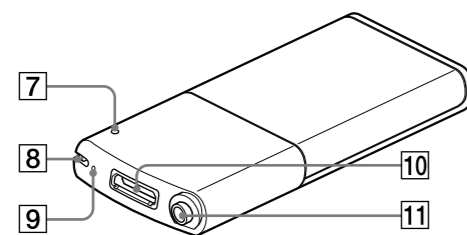


3 Display

4 VOL +*1/- button

5 HOLD switch

Rear



6 OPTION/PWR OFF button

Press to display the option menu.

If you press and hold the OPTION/PWR OFF button, the screen turns off and the player enters standby mode.

7 RESET button

Use a small pin, etc.

8 Strap hole

9 Microphone

10 WM-PORT jack

Connect the supplied USB cable, or optional peripheral devices.

11 Headphone jack

*1 There are tactile dots. Use them to help with button operations.

Troubleshooting

If the player does not function as expected, try the following steps to resolve the issue.

1 Find the symptoms of the issue in “Troubleshooting” in the Operation Guide (PDF file), and try any corrective actions listed.

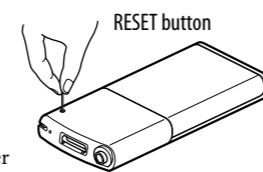
For details on connecting to a computer, see the tables on the right.

2 Connect the player to your computer to charge the battery.

You may be able to resolve some issues by charging the battery.

3 Press the RESET button with a small pin, etc.

If you press the RESET button while operating the player, stored data and player settings may be lost.



4 Check information on the issue in the Help of each software.

5 Look up information on the issue on one of the customer support Web sites.

About the customer support Web sites, see “For the latest information”.

6 If the approaches listed above fail to resolve the issue, consult your nearest Sony dealer.

Symptom	Cause/Remedy
The player cannot charge the battery.	<ul style="list-style-type: none"> The USB cable is not connected to a USB connector on your computer properly. <ul style="list-style-type: none"> → Disconnect the USB cable, and then reconnect it. → Use the supplied USB cable. The battery is charged in an ambient temperature out of the range of 5 °C (41°F) to 35 °C (95°F). <ul style="list-style-type: none"> → Charge the battery in an ambient temperature of 5 °C (41°F) to 35 °C (95°F). The computer is not on. <ul style="list-style-type: none"> → Turn on the computer. Your computer has entered Sleep or Hibernate status. <ul style="list-style-type: none"> → Release the computer from Sleep or Hibernate status.
[Connecting] or [Connected USB (MTP)] does not appear when connected to the computer with the supplied USB cable.	<ul style="list-style-type: none"> The remaining battery power is insufficient. <ul style="list-style-type: none"> → Charge the battery by connecting the player to a running computer for at least 5 minutes. The USB cable is not connected to a USB connector on your computer properly. <ul style="list-style-type: none"> → Disconnect the USB cable, and then reconnect it. → Use the supplied USB cable. A USB hub is being used. <ul style="list-style-type: none"> → Connecting the player via a USB hub may not work. Connect the player directly to your computer using the supplied USB cable.

Symptom	Cause/Remedy
[Connecting] or [Connected USB (MTP)] does not appear when connected to the computer with the supplied USB cable.	<ul style="list-style-type: none"> The computer is running another software other than the one used for transferring. <ul style="list-style-type: none"> → Disconnect the USB cable, wait a few minutes, and reconnect it. If the problem persists, disconnect the USB cable, restart the computer, and then reconnect the USB cable. [Connecting] or [Connected USB (MTP)] may not appear on the player, depending on the software environment that is running on your computer. <ul style="list-style-type: none"> → Activate Windows Media Player, or Windows Explorer. The USB connector on your computer may have a problem. <ul style="list-style-type: none"> → Connect the player to another USB connector on your computer. The player is in the status of recording or record pause. <ul style="list-style-type: none"> → Your computer does not recognize the player in the status of recording or record pause.
The player becomes unstable while it is connected to the computer.	<ul style="list-style-type: none"> A USB hub or USB extension cable is being used. <ul style="list-style-type: none"> → Connecting the player via a USB hub or extension cable may not work. Connect the player directly to your computer using the supplied USB cable.

Symptom	Cause/Remedy
When double-clicking [Setup.exe] to install the bundled software, [Setup.exe] does not execute, and the Properties window opens.	<ul style="list-style-type: none"> Install the bundled software after installing Windows Media Player 11. For details on Windows Media Player 11, refer to the following web site: http://www.support.microsoft.com/
To initialize (format) the player	
You can format the built-in flash memory of the player. If the memory is formatted, all files including the Operation Guide (PDF file) will be erased and all setting values returned to their defaults. Be sure to verify the files stored in memory prior to formatting, and then export any necessary files to the hard disk of your computer or other device beforehand.	
1 Press and hold the BACK/HOME button until the [Home] menu appears.	
2 Select [Settings] – [Common Settings] – [Format] – [Yes] – [Yes] in this order.	
Press the ▲/▼/◀/▶ button to select the item, and then press the ► button to confirm. When initialization finishes, [Memory formatted.] appears.	
Note	
<ul style="list-style-type: none"> Do not format the built-in flash memory using Windows Explorer. If you format the built-in flash memory, format it on the player. 	

Precautions

About the headphones

- Avoid playing the unit at so loud a volume that extended play might affect your hearing.
- At a high volume outside sounds may become inaudible. Avoid listening to the unit in situations where hearing must not be impaired, for example, while driving or cycling.**
- As the supplied headphones are of open-air design, sounds go out through the headphones. Remember not to disturb those close to you.

Notice for customers: the following information is only applicable to equipment sold in countries applying EU directives

The manufacturer of this product is Sony Corporation, 1-7-1 Konan, Minato-ku, Tokyo, Japan. The Authorized Representative for EMC and product safety is Sony Deutschland GmbH, Hedelfinger Strasse 61, 70327 Stuttgart, Germany. For any service or guarantee matters please refer to the addresses given in separate service or guarantee documents.

Owner's Record

The model and serial numbers are located on the back of the player. Record them in the space provided below. Refer to these numbers in the spaces whenever you call upon your Sony dealer regarding this product.

Model No. _____

Serial No. _____

License and Trademark Notice

Refer to the Operation Guide (PDF file).

For the latest information

If you have any questions or issues with this product, or would like information on compatible items with this product, visit the following web sites.

For customers in the USA:

<http://www.sony.com/walkmansupport>

For customers in Canada:

<http://www.sony.ca/ElectronicsSupport/>

For customers in Europe:

<http://support.sony-europe.com/DNA>

For customers in Latin America:

<http://www.sony-latin.com/index.crp>

For customers in other countries/regions:

<http://www.sony-asia.com/support>

For customers who purchased the overseas models:

<http://www.sony.co.jp/overseas/support/>