

SONY®

4-108-825-52(1)

Active Speaker System

Operating Instructions

SRS-GU10iP

©2010 Sony Corporation



Table of Contents

Checking the contents of the package	5
Preparation	6
Listening to iPod	8
Listening to external equipment	12
Troubleshooting	13
Specifications	14

WARNING

To reduce the risk of fire, do not cover the ventilation opening of the apparatus with newspapers, table-cloths, curtains, etc. Do not place the naked flame sources such as lighted candles on the apparatus.

To reduce the risk of fire or electric shock, do not expose this apparatus to dripping or splashing, and do not place objects filled with liquids, such as vases, on the apparatus.

Do not install the appliance in a confined space, such as a bookcase or built-in cabinet.

The nameplate is located on the bottom exterior of this unit

The unit is not disconnected from the mains as long as it is connected to the AC outlet, even if the unit itself has been turned off.

As the main plug is used to disconnect the unit from the mains, connect the unit to an easily accessible AC outlet. Should you notice an abnormality in the unit, disconnect the main plug from the AC outlet immediately.

Do not expose batteries or apparatus with battery-installed to excessive heat such as sunshine, fire or the like.

Notice for customers: the following information is only applicable to equipment sold in countries applying EU directives.

The manufacturer of this product is Sony Corporation, 1-7-1 Konan Minato-ku Tokyo, 108-0075 Japan. The Authorized Representative for EMC and product safety is Sony Deutschland GmbH, Hedelfinger Strasse 61, 70327 Stuttgart, Germany. For any service or guarantee matters please refer to the addresses given in separate service or guarantee documents.



Disposal of Old Electrical & Electronic Equipment (Applicable in the European Union and other European countries with separate collection systems)

This symbol on the product or on its packaging indicates that this product shall not be treated as household waste. Instead it shall be handed over to the applicable collection point for the recycling of electrical and electronic equipment. By ensuring this product is disposed of correctly, you will help prevent potential negative consequences for the environment and human health, which could otherwise be caused by inappropriate waste handling of this product. The recycling of materials will help to conserve natural resources. For more detailed information about recycling of this product, please contact your local Civic Office, your household waste disposal service or the shop where you purchased the product.

On copyrights

- iPhone, iPod, iPod classic, iPod nano and iPod touch are trademarks of Apple Inc., registered in the U.S. and other countries.
- All other trademarks and registered trademarks are trademarks or registered trademarks of their respective holders. In this manual, TM and [®] marks are not specified.

Precautions

On safety

- AC power cord must be changed only at the qualified service shop.
- Do not use any other AC power adaptor.



Polarity of the plug

On placement

- Do not place the system in an inclined position.
- Do not place the system in locations that are hot and subject to direct sunlight, dusty, very humid, or extremely cold.
- Use caution when placing the unit or AC power adaptor on a specially treated (waxed, oiled, polished, etc.) floor, as staining or discoloration may result.

On cleaning

Clean the cabinet, panel, and controls with a soft cloth slightly moistened with a mild detergent solution. Do not use any type of abrasive pad, scouring powder or solvent such as alcohol or benzene.

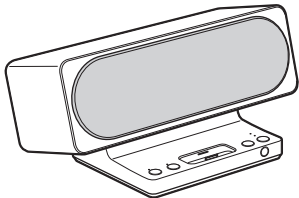
If you have any questions or problems concerning your system, please consult your nearest Sony dealer.

Notes

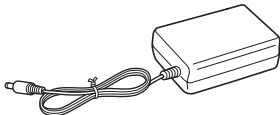
- “Made for iPod” and “Made for iPhone” mean that an electronic accessory has been designed to connect specifically to iPod or iPhone respectively, and has been certified by the developer to meet Apple performance standards. Apple is not responsible for the operation of this device or its compliance with safety and regulatory standards. Please note that the use of this accessory with iPod or iPhone may affect wireless performance.
- In these Operating Instructions, “iPod” is used as a general reference for the iPod functions on the iPod and iPhone, unless otherwise specified by the text or illustrations.
- Sony cannot accept responsibility in the event that data recorded to iPod is lost or damaged when using an iPod connected to this unit.
- For details on supplied Dock adapters for iPod, refer to the instructions supplied with the Dock adapters. When you use other iPod models, a compatible Dock adapter from Apple Inc. will need to be purchased separately.

Checking the contents of the package

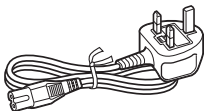
Main unit (1)
(Refer to "Compatible iPod/iPhone models.")



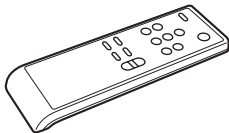
AC Power Adaptor (1)



AC cord (1)



Remote commander (1)

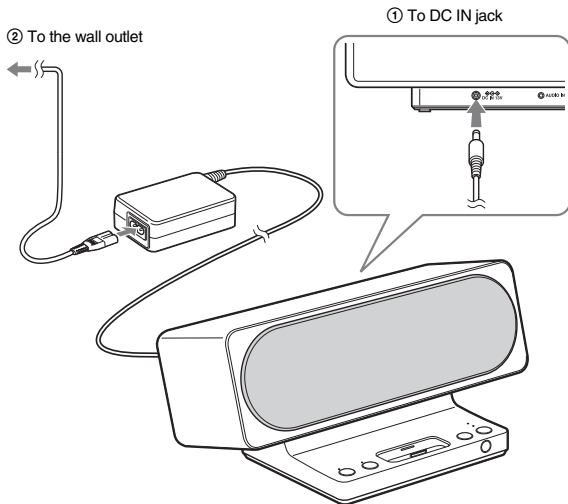


Dock adapters for iPod

For details on supplied Dock adapters for iPod, refer to the instructions supplied with the Dock adapters.

Preparation

Connect the AC power adaptor to the unit



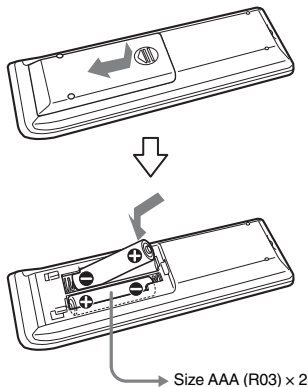
Notes

- Do not connect any other AC Power adaptor to the main unit.
- The system is not designed to be used as a portable device.

Prepare the remote commander

Installing the batteries into the remote commander

Insert two size AAA (R03) batteries (not supplied).



When to replace the batteries

With normal use, the batteries should last for about six months. When the remote commander no longer operates the unit, replace all the batteries with new ones.

Notes

- Do not charge dry batteries.
- When you are not going to use the remote commander for a long time, remove the batteries to avoid any damage caused by leakage and corrosion.

Tip

When the remote commander can no longer operate the system, replace the batteries with new ones.

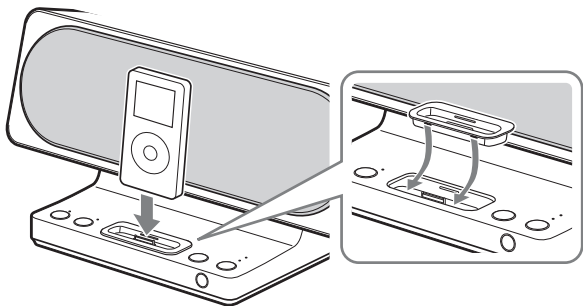
WARNING

Battery may explode if you mistreated.
Do not recharge, disassemble or dispose of in fire.

Listening to iPod

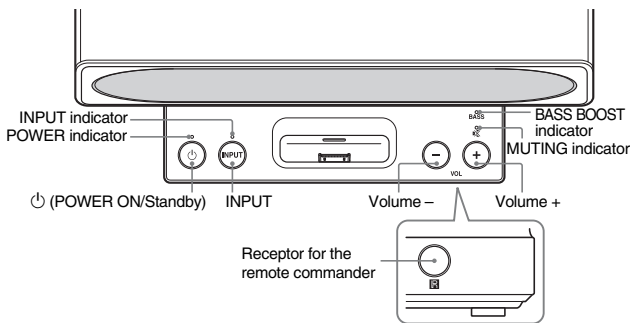
To put the iPod into the unit

Update your iPod to use the latest software before you use it.



- 1** Choose the Dock adapter for iPod that fits your iPod. For details on supplied Dock adapters for iPod, refer to the instructions supplied with the Dock adapters.
- 2** Insert the Dock adapter into the unit.
- 3** Place the iPod into the unit.

Listening to the sound



1 Press **POWER ON/Standby**.

The **POWER** indicator on the main unit lights up.

2 Press **INPUT** to switch the function from **AUDIO IN** to the **iPod**.

Press **INPUT**, and confirm indicator off.

3 Select songs and start play on your **iPod** (refer to “Compatible iPod/iPhone models”).

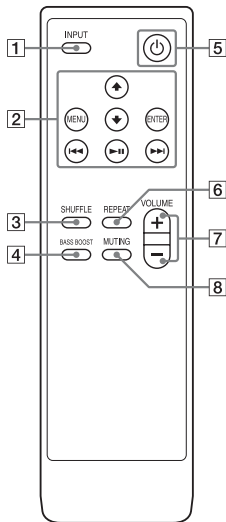
The system charges the battery of iPod at the same time.

Use the remote or your iPod to play, stop and perform other operations.

When operating the iPod while it is in the connector, brace it with your other hand.

4 Adjust the volume using **Volume +/-** on the main unit.

Using the remote



The default settings are underlined.

- 1** **INPUT** button
Switches the input source.
iPod ↔ AUDIO IN* (The INPUT indicator lights up)
- 2** **↑/↓**** button
Select a menu or a track for playback.
◀◀/▶▶** buttons
Hold down to fast-rewind (fast-forward), or press and release to skip to the beginning of the current (or next) song.

MENU** button

Works much like the Menu button on the iPod.

ENTER** button

Execute the selected menu or the playback.

▶▶||** button**

Hold down to turn the iPod off, or press and release to play back or pause.

- 3** **SHUFFLE** button
Play tracks in random order.
(Track → album → OFF)
- 4** **BASS BOOST** button
Adjust the bass.
ON ↔ OFF
(The BASS BOOST indicator lights up)
- 5** **⏻ (POWER)** button
To power ON/Standby.
ON ↔ Standby
(The POWER indicator lights up)
- 6** **REPEAT** button
Play tracks repeatedly.
(Track → All tracks → OFF)
- 7** **VOLUME +/-** button
Adjusts the volume. (32 levels)
(While adjusting the volume, the POWER indicator blinks. When the volume level is minimum or maximum, the MUTING indicator blinks.)
- 8** **MUTING** button
Silent the sound ON ↔ OFF
(The MUTING indicator lights up)

- * The iPod cannot be operated while the INPUT indicator is on.
- ** See the user's guide of your iPod for information on the operation of the button.

Notes

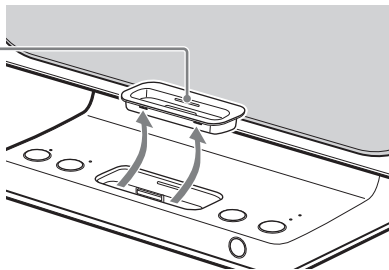
- Depending on the connected iPod, operations may differ.
- The iPhone rings as the ring volume set on the iPhone even when it is connected to the unit. Adjust the ring volume to the appropriate setting on the iPhone.
- When the iPhone is connected to the unit and you receive a call during playback, playback will pause and you can take an incoming call.
- The volume (except for the iPhone ring volume) cannot be adjusted using the volume control on the iPod when it is connected to the unit.
- Some popping noise may occur when turning on the iPod.
Turn on the iPod and the unit, and then place the iPod in the unit.
- Loud sound may come out suddenly, depending on the volume settings of each.

To use the unit as a battery charger

Plug the AC cord into the mains. And put the iPod into the main unit's connector. Battery charging starts automatically. The charging conditions appear in the iPod display. For details, see the user's guide of your iPod. When you press POWER to turn off the unit, the display of the connected iPod is also turned off. However, the iPod will not be locked in that condition and information stored in the iPod may be viewed by other people.

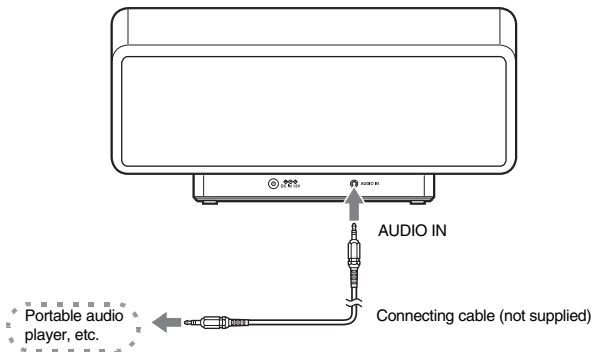
To remove the Dock adapter for iPod

To remove the Dock adapter for iPod, pull it up with your fingernail or a flat object using the slot inside the adapter.



Listening to external equipment

You can connect portable audio players to the system. Connect the player to the AUDIO IN using the connecting cable (not supplied).



How to listen

- 1 Connect the connecting cable.
- 2 Press POWER ON/Standby.
- 3 Press INPUT, confirm the indicator is on, and then start play back of your portable audio player.
- 4 Adjust the volume using Volume +/- on the main unit.

Tip

- You can listen to music on iPod models other than those listed as compatible iPod models (refer to “Compatible iPod/iPhone models”) by connecting the iPod to the AUDIO IN using the connecting cable (not supplied).
- You can also use the BASS BOOST, POWER, VOLUME, and MUTING of the remote commander to operate.

Troubleshooting

Should you encounter a problem with your system, find your problem in the troubleshooting checklist below and take the indicated corrective action. If the problem persists, contact your Sony dealer.

Note that if service personnel changes some parts during repair, these parts may be retained.

When bringing the system in for repairs, be sure to bring in the entire system.

This product is a system product, and the entire system is needed to determine the location requiring repair.

All indicators flash.

- The system is in protect mode.
- Disconnect and reconnect the AC cord of the unit, then turn the unit on again.

If all indicators still flash, consult your nearest Sony dealer.

There is no sound.

- Update your iPod* to use the latest software before you use it.
- Check the connections.

- Press VOLUME + on the main unit. If the volume is still low even after the system's volume is turned up to the maximum level, adjust the volume of the connected portable audio player (when using AUDIO IN).
- Remove the protect case of the iPod*, and make sure the iPod* is securely connected.
- Make sure the iPod* is playing music.
- Check that the correct function is selected.

The remote does not function.

- Remove any obstacles between the unit and the remote commander.
- Point the remote at the main unit's sensor.
- Replace the battery.
- Locate the system away from fluorescent lights.
- Connect the iPod* to the connector securely.
- Update your iPod* to use the latest software before you use it.

There is a severe hum or noise.

- Move the system away from the source of noise.
- Connect the system to a different mains.

The sound is distorted.

- Press VOLUME – on the main unit to reduce the volume.
- Set the "EQ" setting of the iPod* to "Off" or "Flat".

Ring volume of the iPhone does not change.

- Adjust the ring volume on the iPhone*.

* Refer to “Compatible iPod/iPhone models.”

Specifications

Main unit

Continuous RMS power output (reference):

10 W + 10 W
(1 kHz, 10% THD)

Inputs

iPod dock connector:

Refer to
“Compatible iPod/
iPhone models.”

AUDIO IN: Stereo mini-jack

Speaker units: 57 mm dia.

Rated impedance (L/R):

8 Ω

Dimensions (w/h/d):

Approx. 320 × 154
× 194 mm

Mass: Approx. 2.1 kg

Operating temperature:

10°C to 35°C

Power requirements:

DC IN: 13 V, 2.0 A

Design and specifications are subject to change without notice.

