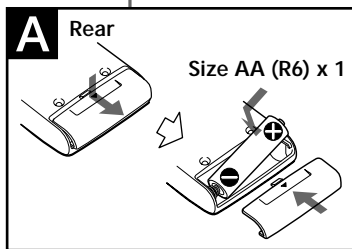
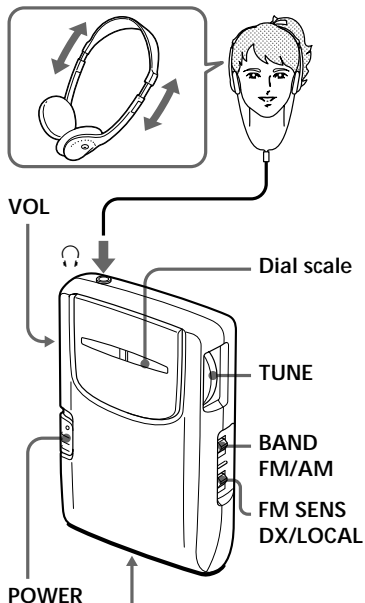


# FM Stereo/AM Radio

## Operating Instructions

SRF-FQ9

Sony Corporation © 1998 Printed in China



## Installing the Battery (See Fig. A)

- 1 Detach the guard. (See Fig. B)
- 2 Open the battery compartment lid at the rear of the radio.
- 3 Insert one size AA (R6) battery (not supplied) with the ⊕ and ⊖ marks aligned correctly.
- 4 Close the battery compartment lid.

### Battery life

Using Sony size AA (R6) battery:  
Approx. 40 hours

### When to replace the battery

Replace the battery when the sound becomes weak or distorted. Remove the old battery and insert a new one.

### Notes on the battery

- Align the battery correctly.
- The dry battery cannot be charged.
- To avoid damage from possible battery leakage, remove the battery when unit will not be used for a long time.

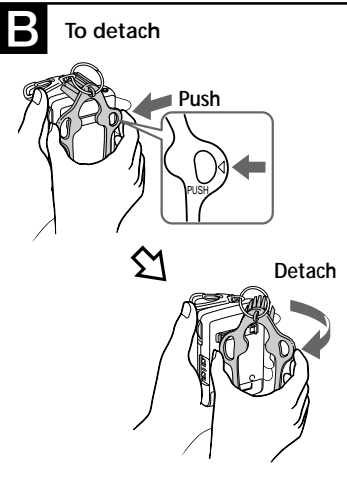
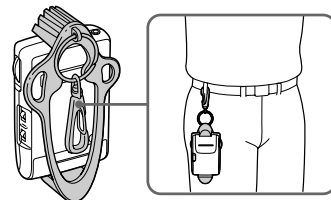
## Playing the Radio

- 1 Connect the supplied headphones to Ⓜ (headphones) jack and adjust them to your head.
- 2 Set **POWER** to ON to turn on the radio.
- 3 Set **BAND** to select FM or AM.
- 4 Turn **TUNE** to tune in a station.
- 5 Adjust **VOL** (volume).

- To turn off the radio, set **POWER** to OFF.
- To improve reception  
**FM**: Extend the headphones cord which functions as the FM antenna.  
**AM**: Rotate the unit horizontally for optimum reception. A ferrite bar antenna is built in the unit.
- Set **FM SENS** to **LOCAL** if interference is prevalent when radio wave intensity is dramatically stronger.  
 To listen to stereo programs, set to **DX**.

## Using the Guard

You can attach the guard to the belt holder on your pants and use it as a key ring.



## Precautions

- Operate the unit only on 1.5 V DC.
- Do not leave the unit in a location near heat sources, or in a place subject to direct sunlight, excessive dust, or mechanical shock.
- When the case becomes soiled clean it with a soft cloth dampened with a mild detergent solution. Never use abrasive cleansers or chemical solvents, as they may mar the case.
- In vehicles or in buildings, radio reception may be difficult or noisy. Try listening near a window.

## Notes on Headphones

### Road safety

Do not use headphones while driving, cycling, or operating any motorized vehicle. It may create a traffic hazard and is illegal in many areas. It can also be potentially dangerous to play your headphones at high volume while walking, especially at pedestrian crossings. You should exercise extreme caution or discontinue use in potentially hazardous situations.

### Preventing hearing damage

Avoid using headphones at high volume. Hearing experts advise against continuous, loud and extended play. If you experience a ringing in your ears, reduce volume or discontinue use.

### Caring for others

Keep the volume at a moderate level. This will allow you to hear outside sounds and to be considerate to people around you.

## Warning

If there is lightning when you are using the unit, take off the headphones immediately.

If you have any questions or problem concerning your unit, please consult the nearest Sony dealer.

## Specifications

### Frequency range

FM: 87.5 – 108 MHz

AM: 530 – 1,710 kHz

### Output

⊖ (Headphones) jack (stereo minijack)

### Power output

3.6 mW + 3.6 mW (at 10% harmonic distortion) with headphones having impedance of 24 ohms

### Power requirements

1.5 V DC, one size AA (R6) battery

### Dimensions

Approx. 63 × 92.9 × 26.2 mm  
(w/h/d) (2 1/2 × 3 3/4 × 1 1/16 in)  
(not incl. guard)

### Mass

Main unit: approx. 85g (3 oz) incl. a battery  
Guard: approx. 34g (1.2 oz)

### Accessories supplied

Stereo headphones (1)  
Guard (1)

Design and specifications are subject to change without notice.

SONY®

Tape Cassette Player/Recorder/CD Player/Mini Disc  
DAT/Radio/Head Phone/Speaker/MIC/Personals

## LIMITED WARRANTY

Portable Audio

Sony Electronics Inc. ("Sony") warrants this Product (including any accessories) against defects in material or workmanship as follows:

1. For a period of one (1) year from the date of purchase, Sony will repair or replace, at its option, at no charge through your Sony authorized dealer, Sony owned Service Center, or the Sony Parts Center Exchange Department, the defective unit. After this one (1) year period, you must pay for the replacement unit. This warranty does not cover costs incurred in connection with the removal and re-installation of radios, speakers or accessories, nor does it cover any other contingent expenses.

2. To obtain warranty service, you must take the Product, or deliver the Product freight prepaid, in either its original packaging or packaging affording an equal degree of protection, to any authorized Sony service facility.

This warranty does not cover customer instruction, installation, set up adjustments or signal reception problems.

This warranty does not cover cosmetic damage or damage due to acts of God, accident, misuse, abuse, negligence, commercial use, or modification of, or to any part of the Product, including the antenna. This warranty does not cover damage due to improper operation or maintenance, connection to improper voltage supply, or attempted repair by anyone other than a facility authorized by Sony to service the Product. This warranty does not cover Products sold AS IS or WITH ALL FAULTS, or consumables (such as fuses or batteries). This warranty is valid only in the United States.

Proof of purchase in the form of a bill of sale or receipted invoice which is evidence that the unit is within the Warranty period must be presented to obtain warranty service.

This warranty is invalid if the factory applied serial number has been altered or removed from the Product.

REPAIR OR REPLACEMENT AS PROVIDED UNDER THIS WARRANTY IS THE EXCLUSIVE REMEDY OF THE CONSUMER. SONY SHALL NOT BE LIABLE FOR ANY INCIDENTAL OR CONSEQUENTIAL DAMAGES FOR BREACH OF ANY EXPRESS OR IMPLIED WARRANTY ON THIS PRODUCT. EXCEPT TO THE EXTENT PROHIBITED BY APPLICABLE LAW, ANY IMPLIED WARRANTY OF MERCHANTABILITY OR FITNESS FOR A PARTICULAR PURPOSE ON THIS PRODUCT IS LIMITED IN DURATION TO THE DURATION OF THIS WARRANTY.

Some states do not allow the exclusion or limitation of incidental or consequential damages, or allow limitations on how long an implied warranty lasts, so the above limitations or exclusions may not apply to you. In addition, if you enter into a service contract with the Sony Partnership within 90 days of the date of sale, the limitation on how long an implied warranty lasts does not apply to you. This warranty gives you specific legal rights, and you may have other rights which vary from state to state.

The address of the Sony Parts Center – Exchange Department is:

Sony Parts Center – Exchange Department  
8281 NW 107th Terrace  
Kansas City, Missouri 64153

For your convenience, Sony Electronics Inc. has established telephone numbers for frequently asked questions:

To locate the servicer or dealer nearest you, or for service assistance or resolution of a service problem, or for product information or operation, call:

**Sony Direct Response Center**  
1-(800)-222-7669  
or write to:

Sony Direct Response Center  
12451 Gateway Blvd.  
Fort Myers, FL 33913

For an accessory or part not available from your authorized dealer, call:

1-(800)-488-SONY (7669)

Sony  line

<http://www.world.sony.com/>