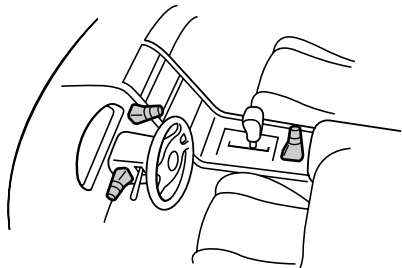


Installing the rotary commander

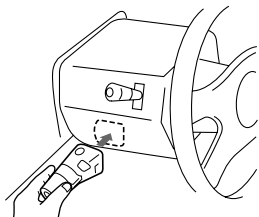
Notes

- Choose the mounting location carefully so the rotary commander will not interfere with operating the car.
- Do not install the rotary commander in a place where it may jeopardize the safety of the (front) passenger in any way.
- When installing the rotary commander, be sure not to damage any electrical cables etc. on the other side of the mounting surface.
- Avoid installing the rotary commander where it may be subject to high temperatures, such as from direct sunlight or hot air from the heater etc.

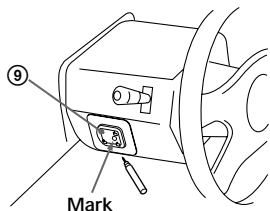
Example of a mounting location



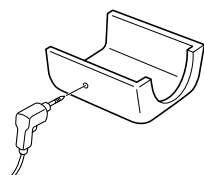
1 Choose the exact location for mounting the rotary commander, then clean the mounting surface. Dirt and oil impair the adhesive strength of the double-sided adhesive tape.



2 Mark the position for the supplied screw. Use the screw holes on the mounting hardware ⑨ to mark the position.



3 Remove the steering wheel column cover, and drill 2 mm (3/32 in.) diameter hole at the marked position.

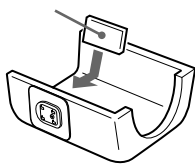
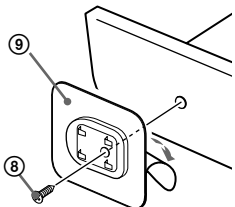


4 Warm the mounting surface and the double-sided adhesive tape on the mounting hardware ⑨ to a temperature of 20°C (68°F) to 30°C (86°F), and attach the mounting hardware to the mounting surface applying even pressure. Use the supplied screw ⑧ to set into secure position.

Attach a piece of heavy duty tape etc. on the other side of the mounting surface to cover the protruding tips of the screws so they will not interfere with any electrical cables etc. inside the steering wheel column.

Cut the mounting hardware ⑨. If necessary.

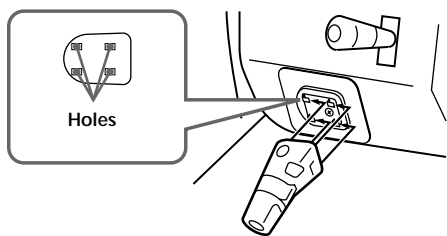
Heavy duty tape etc.



5 After reinstalling the steering wheel column cover, attach the rotary commander to the mounting hardware by aligning the four holes on the bottom of the rotary commander with the four catches on the mounting hardware and sliding the rotary commander until it locks into place as illustrated.

Note

If you are mounting the rotary commander on the steering wheel column, make sure that the protruding tips of the screws on the inner surface of the column do not in any way hinder or interfere with the movement of the rotating shaft, operative parts of the switches or the electrical cables etc. inside the column.



FM/AM Cassette Car Stereo

Installation/Connections

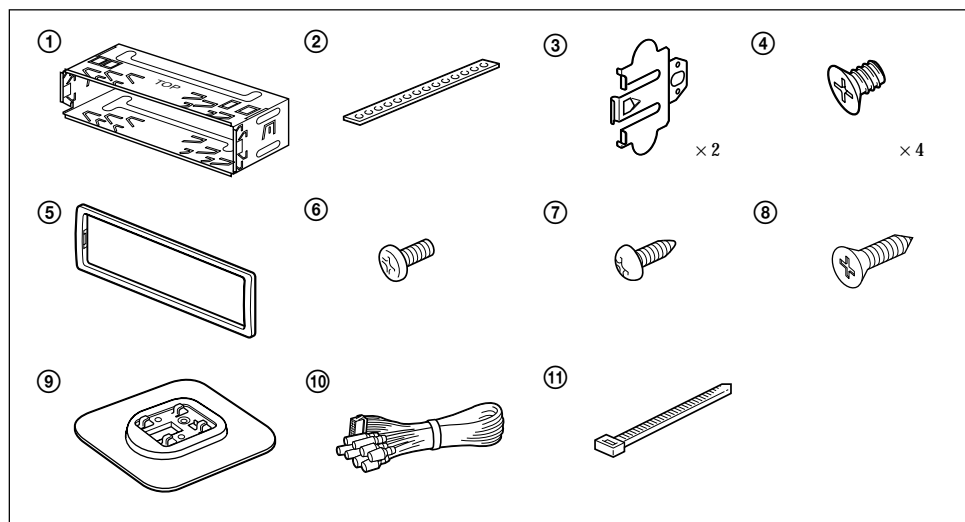
UBE®

XR-C9100

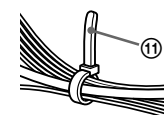
Sony Corporation © 1998 Printed in Japan

Parts for installation and connections

The numbers in the list are keyed to those in the instructions.

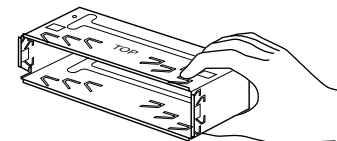


After connecting, bundle up the connecting cord of the rotary commander with other connecting cords of the audio equipment by attaching the supplied crimper ⑩. Be sure to leave some slack in the connecting cord between the plug and the crimper.



Caution

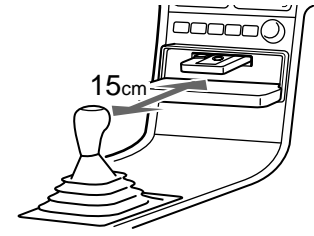
Cautionary notice for handling the bracket ①. Handle the bracket carefully to avoid injuring your fingers.



Installation

Precautions

- Do not tamper with the four holes on the upper surface of the unit. They are for tuner adjustments to be done only by service technicians.
- If you mount other Sony equipment with this unit, it is better to mount this unit in the lower position.
- There must be a distance of at least 15 cm (6 in.) between the cassette slot of the unit and shift lever to insert cassette easily. Choose the installation location carefully so the unit does not interfere with gear shifting and other driving operations.
- Choose the installation location carefully so that the unit will not hamper the driver during driving.
- Avoid installing the unit where it would be subject to high temperatures, such as from direct sunlight or hot air from the heater, or where it would be subject to dust, dirt or excessive vibration.
- Use only the supplied mounting hardware for a safe and secure installation.



Mounting angle adjustment

Adjust the mounting angle to less than 20°.

How to detach and attach the front panel

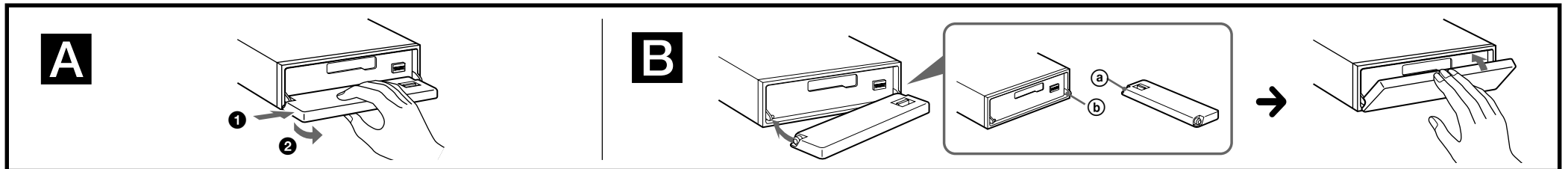
Before installing the unit, detach the front panel.

A To detach

Before detaching the front panel, be sure to press **OFF** first. Then press **OPEN** to open the front panel, then slide the front panel to the right side, and pull out the left side of the front panel.

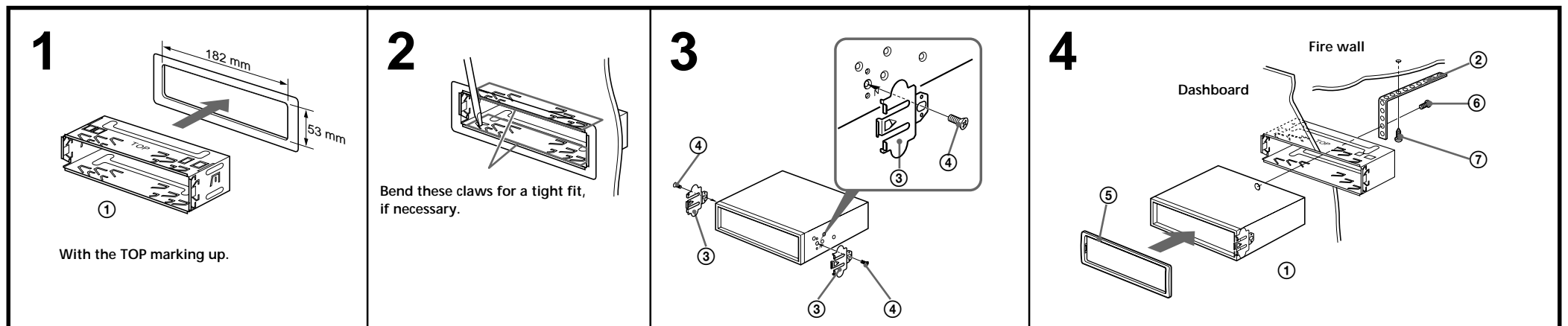
B To attach

Place the hole **a** in the front panel onto the spindle **b** on the unit as illustrated, then push the left side in.



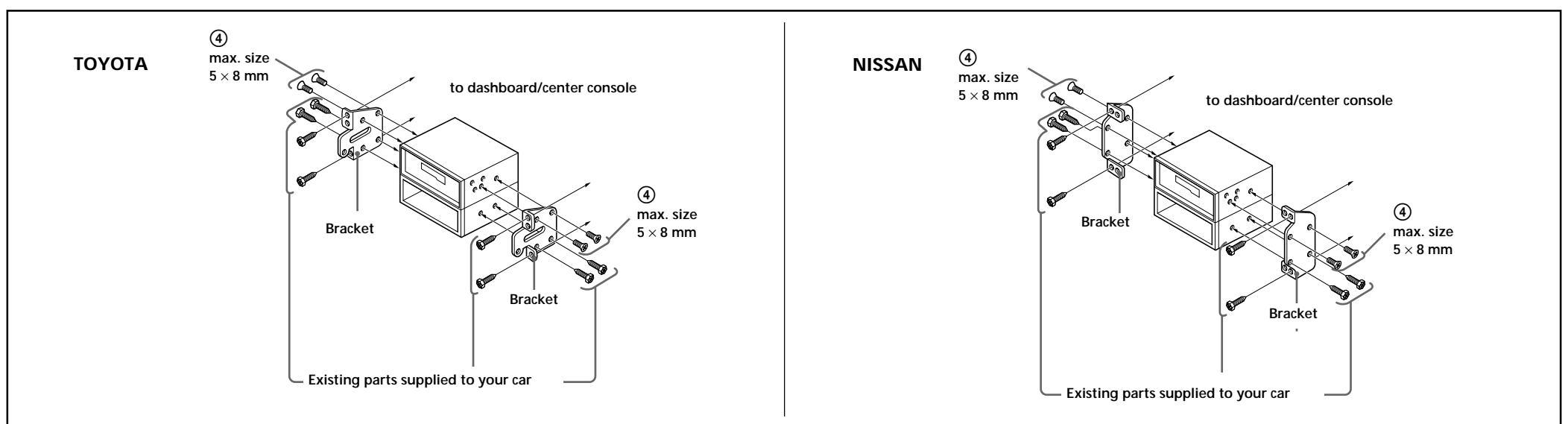
Mounting example

Installation in the dashboard



Mounting the unit in a Japanese car

You may not be able to install this unit in some makes of Japanese cars. In such a case, consult your Sony dealer.



Note
To prevent malfunction, install only with the supplied screws ④.

Connections

Caution

- This unit is designed for negative ground 12 V DC operation only.
- Before making connections, disconnect the ground terminal of the car battery to avoid short circuits.
- Connect the yellow and red power input leads only after all other leads have been connected.
- Be sure to connect the red power input lead to the positive 12 V power terminal which is energized when the ignition key is in the accessory position.

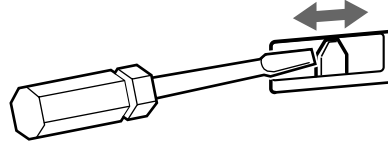
- Run all ground wires to a common ground point.
- Connect the yellow cord to a free car circuit rated higher than the unit's fuse rating. If you connect this unit in series with other stereo components, the car circuit they are connected to must be rated higher than the sum of the individual component's fuse rating. If there are no car circuits rated as high as the unit's fuse rating, connect the unit directly to the battery. If no car circuits are available for connecting this unit, connect the unit to a car circuit rated higher than the unit's fuse rating in such a way that if the unit blows its fuse, no other circuits will be cut off.

If your car has no accessory position on the ignition key switch — POWER SELECT switch

The illumination on the front panel is factory-set to be turned on even when the unit is not being played. However, this setting may cause some car battery wear if your car has no accessory position on the ignition key switch. To avoid this battery wear, set the POWER SELECT switch located on the bottom of the unit to the **ⓑ** position, then press the reset button. The illumination is reset to stay off while the unit is not being played.

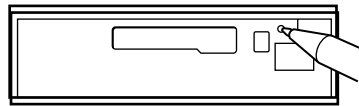
Notes

- The caution alarm for the front panel is not activated when the POWER SELECT switch is set to the **ⓑ** position.
- Do not use excessive force when changing the POWER SELECT switch.





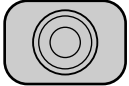
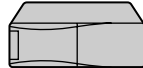
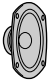
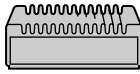
Reset button

When the installation and connections are complete, be sure to press the reset button with a ball-point pen etc.



Connection diagram

Equipment used in illustrations (not supplied)

 Front speaker	 TV monitor	 Active subwoofer	 CD/MD changer
 Rear speaker		 Power amplifier	<i>Note</i> For connecting two or more changers, the source selector XA-C30 (optional) is necessary.

A

B

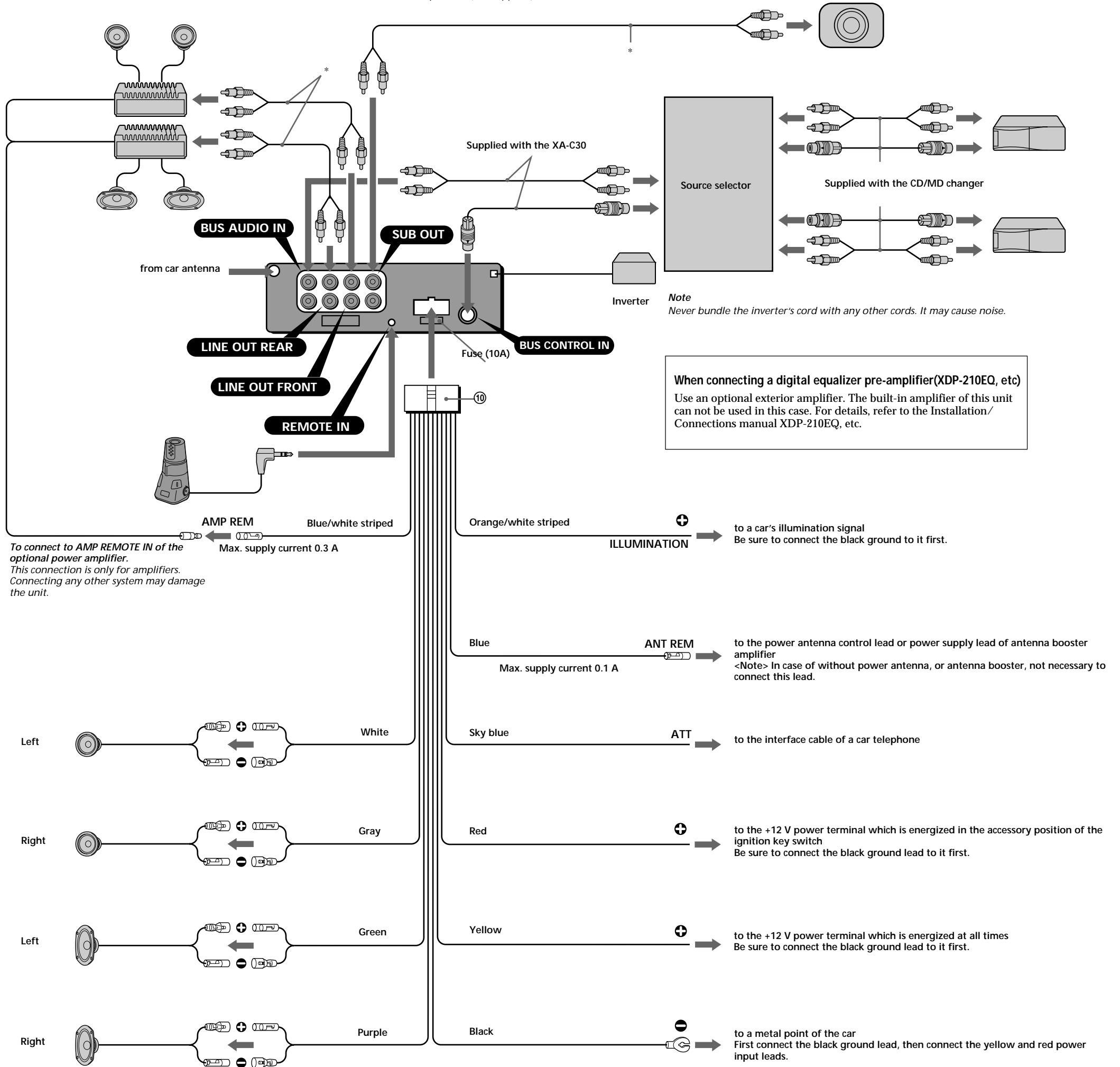
C

D

For details about the connection, refer to the Installation/Connections manual XDP-210EQ, etc. (not supplied)

Connection example

* RCA pin cord (not supplied)



Note
Never bundle the inverter's cord with any other cords. It may cause noise.

When connecting a digital equalizer pre-amplifier (XDP-210EQ, etc)
Use an optional exterior amplifier. The built-in amplifier of this unit can not be used in this case. For details, refer to the Installation/Connections manual XDP-210EQ, etc.

To connect to AMP REMOTE IN of the optional power amplifier.
This connection is only for amplifiers.
Connecting any other system may damage the unit.

- ILLUMINATION** (Orange/white striped) → to a car's illumination signal
Be sure to connect the black ground to it first.
- ANT REM** (Blue) → to the power antenna control lead or power supply lead of antenna booster amplifier
Max. supply current 0.1 A
<Note> In case of without power antenna, or antenna booster, not necessary to connect this lead.
- ATT** (Sky blue) → to the interface cable of a car telephone
- +12V** (Red) → to the +12 V power terminal which is energized in the accessory position of the ignition key switch
Be sure to connect the black ground lead to it first.
- +12V** (Yellow) → to the +12 V power terminal which is energized at all times
Be sure to connect the black ground lead to it first.
- Ground** (Black) → to a metal point of the car
First connect the black ground lead, then connect the yellow and red power input leads.

- Notes on the control leads**
- The power antenna control lead (blue) supplies +12 V DC when you turn on the unit.
 - A power antenna without relay box cannot be used with this unit.
- Memory hold connection**
When the yellow power input lead is connected, power will always be supplied to the memory circuit even when the ignition key is turned off.
- Notes on speaker connection**
- Before connecting the speakers, turn the unit off.
 - Use speakers with an impedance of 4 to 8 ohms, and with adequate power handling capacities. Otherwise, the speakers may be damaged.
 - Do not connect the antennas of the speaker system to the car chassis, and do not connect the antennas of the right speaker with those of the left speaker.
 - Do not attempt to connect the speakers in parallel.
 - Do not connect any active speakers (with built-in amplifiers) to the speaker antennas of the unit. Doing so may damage the active speakers. Therefore, be sure to connect passive speakers to these antennas.

Inverter

- Install the inverter far away from the unit using double-side adhesive tape or something similar.
- Be sure not to mount the inverter under a mat or in a place exposed to splashing water of air conditioner. It may cause electric shock or damage to the unit.

Note
If the inverter's cord is pinched, the display indications may not appear.