

Radio Cassette Player

WALKMAN 外イユナ

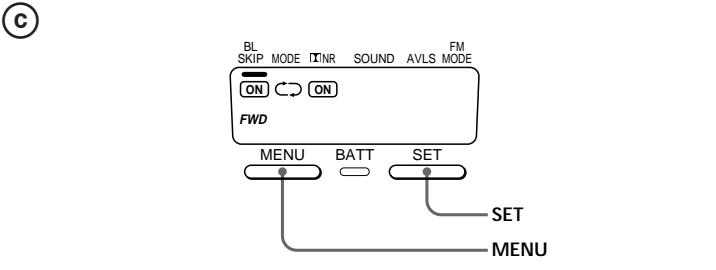
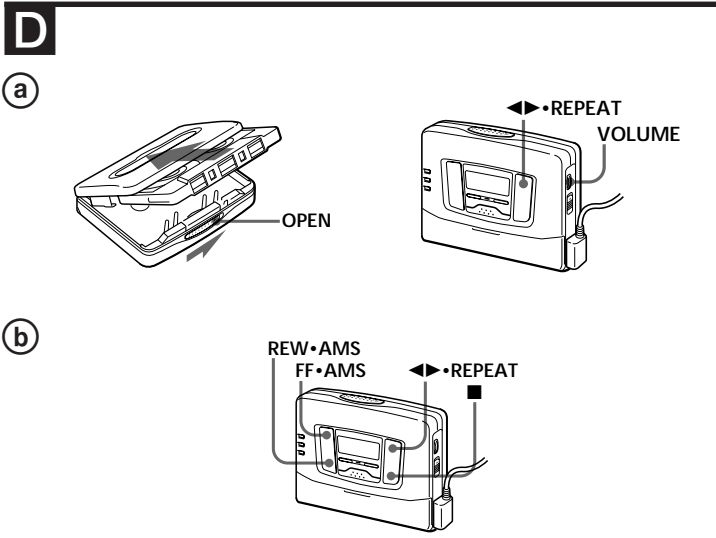
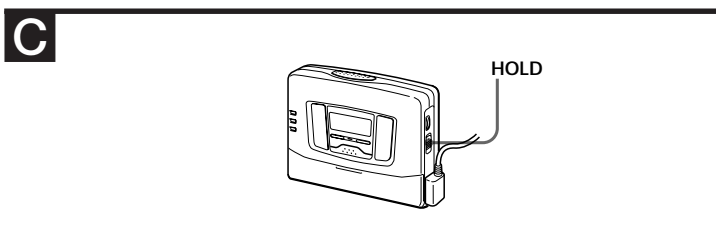
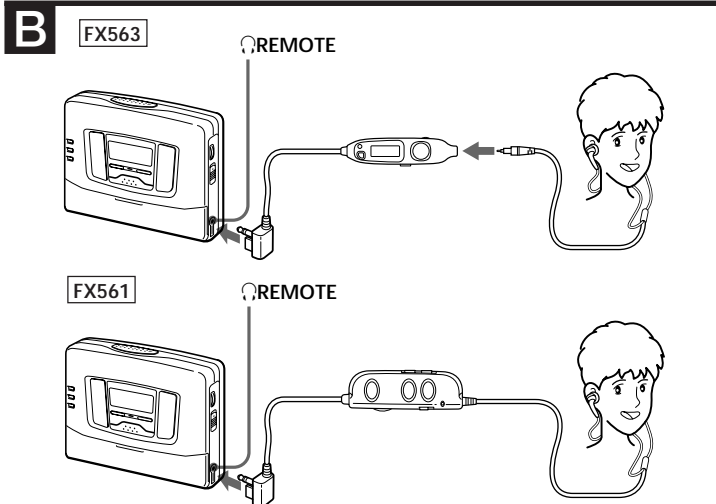
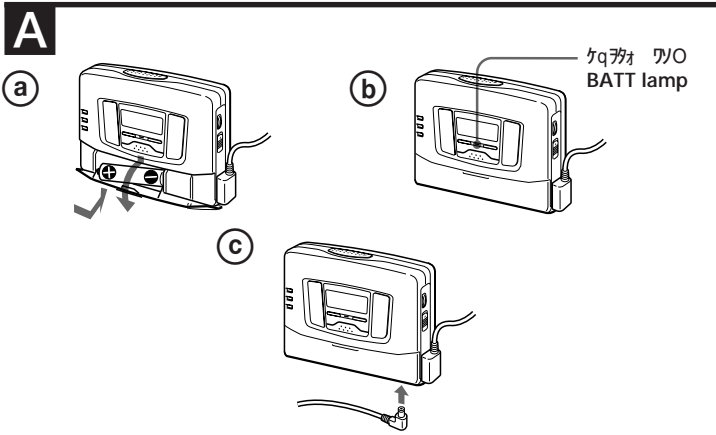
WALKMAN is a Sony 登録商標. WALKMAN est une marque déposée de Sony Corporation.

WM-FX563/FX561

Sony Corporation © 1998 Printed in Malaysia

この冊子には、WM-FX563とWM-FX561の操作の仕方について、また、安全に関する注意事項、および、修理に関するお問い合わせ先について、詳しく説明しています。

The illustrations in this manual are for WM-FX563 and WM-FX561. Before you start reading, check your model number. WM-FX563 is the model used for illustration purposes. Any differences in operation are clearly indicated in the text, for example, "FX563 only".



はじめに

この冊子には、Sony WM-FX563、FX561の操作の仕方について、また、安全に関する注意事項、および、修理に関するお問い合わせ先について、詳しく説明しています。

この冊子には、WM-FX563とWM-FX561の操作の仕方について、また、安全に関する注意事項、および、修理に関するお問い合わせ先について、詳しく説明しています。

安全に関する注意事項

この冊子には、安全に関する注意事項が記載されています。

リモコンの接続

リモコンを接続する際は、必ず正しい向きで接続してください。

HOLDの機能

HOLDボタンを押すと、再生が一時停止します。

REPEATとVOLUME

REPEATボタンを押すと、再生が繰り返されます。VOLUMEボタンは音量を調整します。

コントロールパネル

コントロールパネルには、再生モード、音質設定、音量調整などのボタンがあります。

電源の接続

乾電池または電源アダプターを接続してください。

イヤホンの接続

イヤホンケーブルを正しく挿入してください。

再生モード

再生モードを選択して、お気に入りの音楽を聴きましょう。

電池の交換

電池が消耗した場合は、新しい電池に交換してください。

故障のトラブルシューティング

再生が正常に行かない場合は、以下の手順を試してください。

付属品

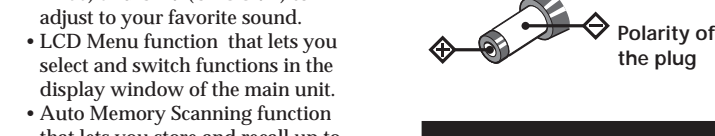
この製品には、イヤホンケーブル、リモコンなどが付属しています。

Welcome!

Thank you for purchasing the Sony WM-FX563/FX561 Radio Cassette Player.

Some features are:

- You can enjoy low bass sounds by the powerful earphones (earphones type only).
- You can choose from 2 different emphasizing tones: MB (MEGA BASS) and GRV (GROOVE) to adjust to your favorite sound.
- LCD Menu function that lets you select and switch functions in the display window of the main unit.
- Auto Memory Scanning function that lets you store and recall up to 16 stations for FM and 8 stations for AM automatically.
- AMS (Automatic Music Sensor) function that searches the beginning of the current and 2 previous tracks, and succeeding 3 tracks at high speed.
- Useful remote control.



Connecting the Earphones (see Fig. B)

- Connect the micro plug firmly to the remote control. (FX563 only)
- Connect the earphones to the left ear and "R" marked side to the right ear. If the earphones do not fit to your ears or the sound is unbalanced, turn around the earphones a little to fit to your ears firmly.

Getting Started

Preparing a Power Source

Choose either dry battery or house current as the power source.

Dry Battery (see Fig. A-②)

Open the battery compartment lid, and insert an R6 (size AA) dry battery (not supplied) with correct polarity.

When to replace the battery (see Fig. A-③)

Replace the battery with a new one when the BATT lamp dims.

| Battery life (Approx. hours) (EIAJ)* | Sony alkaline R6P LR6 (SG) (SR) | Sony R6P (SR) |
|--------------------------------------|---------------------------------|---------------|
| Tape playback | 29 | 8 |
| Radio reception | 30 | 8 |

* Measured value by the standard of EIAJ (Electronic Industries Association of Japan). (Using a Sony HF series cassette tape)

Note

- The battery life may shorten depending on the operation of the unit.

For maximum performance we recommend that you use an alkaline battery.

Notes

- Do not charge a dry battery.
- When you do not use the Walkman for a long time, remove the battery to avoid any damage caused by battery leakage and subsequent corrosion.

- Insert a cassette.
- Press ◀▶•REPEAT to start playing then adjust the volume.

When adjusting the volume on the Walkman

Set the VOL control on the remote control at maximum.

When adjusting the volume on the remote control

Set the VOLUME control on the Walkman to around 6.

To operate using the remote control See "Using the Remote Control".

| To | Press (see Fig. D-②) |
|---------------------|---------------------------|
| play the other side | ◀▶•REPEAT during playback |
| stop playback | ■ |
| fast forward | FF•AMS during stop |
| rewind | REW•AMS during stop |

Connecting the Remote Control

repeat the track you are listening to (Repeat Single Track function)

repeat the track you are listening to for two seconds or more during playback

To stop a single repeat, press it again.

find the beginning of the next track/ succeeding 3 tracks (AMS)

find the beginning of the current track/ previous 2 tracks (AMS)

FF•AMS once/ repeatedly during playback

REW•AMS once/ repeatedly during playback

play the other side from the beginning (Skip Reverse function)

play the same side from the beginning (Auto Rewind Play function)

FF•AMS for two seconds or more during stop

REW•AMS for two seconds or more during stop

* Automatic Music Sensor

Note on Beeps during AMS operations

The beeps differ in relation to the track number being searched. When finding the beginning of the next 3 tracks during AMS operations, beeps "•••••" (beep followed by three long beeps) are emitted repeatedly. Likewise, when finding the beginning of the previous 2 tracks, beeps "•••••" are emitted repeatedly. While the remaining tracks are reduced, the number of long beeps are reduced accordingly.

To skip a long blank space between musics. (BL SKIP* function) (see Fig. D-③)

Press MENU repeatedly to set the cursor to BL SKIP in the display. Then press SET to show "ON".

* The Walkman fast forwards the tape to the next track if there is a blank space longer than 12 seconds.

To select playback mode (see Fig. D-④)

Press MENU repeatedly to set the cursor to MODE in the display. Then press SET to select the desired mode.

| To play | Select |
|--|--------|
| Both sides repeatedly | ◀▶ |
| Both sides once from the side facing the cassette holder | ↔ |

Note on AMS, REPEAT Single Track and BL SKIP

To operate the AMS and the REPEAT Single Track functions, you need a blank of 4 seconds or longer between the tracks. For the BL SKIP function, you need a blank of 12 seconds or longer. Therefore, if there is noise between the tracks, these functions will not detect the blank and will not operate. Likewise, if the recording level is moderately low within a track, these functions may inaccurately operate.

To play a tape recorded with Dolby* NR system (see Fig. D-⑤)

Press MENU repeatedly to set the cursor to NR (Dolby noise reduction) in the display. Then press SET to show "ON".

* Dolby noise reduction manufactured under license from Dolby Laboratories Licensing Corporation. "DOLBY" and the double-D symbol are trademarks of Dolby Laboratories Licensing Corporation.

