

WARNING

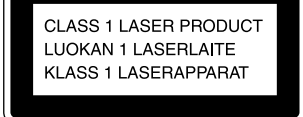
To prevent fire or shock hazard, do not expose the unit to rain or moisture.

To avoid electrical shock, do not open the cabinet. Refer servicing to qualified personnel only.

CAUTION

The use of optical instruments with this product will increase eye hazard.

For Customers in Europe and Saudi Arabia



This Compact Disc player is classified as a CLASS 1 LASER product. The CLASS 1 LASER PRODUCT label is located on the bottom exterior.

Before You Begin

Thank you for choosing the Sony CD clock radio! The CD clock radio will give you many hours of reliable service and listening pleasure. Before operating the CD clock radio, please read these instructions thoroughly and retain them for future reference.

Features

- You can wake up to any track of a CD, radio and buzzer with the snooze function.
- The digital tuner with 5 random memory presets.
- A powerful bass is produced with the MEGA BASS sound system.
- You can enjoy stereo sound both by speakers and by headphones.
- Summer time calculation (one-hour skip function).
- World time calculation (parallel time-difference setting).

Notes on AM Channel Step
The AM channel step differs depending on areas. The channel step of this unit is factory-set to 9 kHz.

Area	Channel step
North and South American countries	10 kHz
Other countries	9 kHz

Power Sources
Installing Batteries

(Fig. A)
Use alkaline batteries.

- Lift up the telescopic antenna.
- Push and slide up the battery cover toward the direction of the arrow.
- Install four LR6 (size AA) batteries with correct polarity.

Battery Life (Approx. hours)
Listening by speakers

	CD	RADIO
Sony LR6 (size AA)	9	26

Listening by headphones

	CD	RADIO
Sony LR6 (size AA)	11	40

Replacing Batteries
When the batteries become weak, "00" will appear in the display and the CD and Radio functions will stop. Replace all the dry batteries. When the batteries are exhausted, "00" will flash and only the clock is displayed. After replacing the batteries or when the AC power adaptor is connected, the "00" indicator will stop flashing and then start the unit operations.

Note
When the unit is not being used for long period of time, remove the batteries to avoid damage from battery leakage and corrosion.

Installing Lithium Battery for Clock Backup (Fig. B)

- The lithium battery compartment lid is at the bottom of the unit. Open the lid with a coin, turning it towards OPEN.
- Install the lithium battery CR 2025 with the ⊕ facing upwards, close the lid turning it towards CLOSE.

Replacing Lithium battery
Replace the lithium battery when the LCD display becomes weak. Keep the dry batteries installed or the AC power adaptor connected to keep the memory from being erased. Replace the lithium battery regularly once a year.

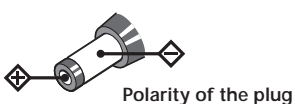
- Notes on batteries**
- Keep the lithium battery out of reach of children. Should the battery be swallowed, immediately consult a doctor.
 - Wipe the battery with a dry cloth to assure good contact.
 - Be sure to install the battery in the correct polarity position.
 - Do not hold the battery with metallic tweezers, as doing so may cause a short-circuit.
 - Do not break up the battery or throw it into a fire, which might cause it to explode. Carefully dispose of the used battery.

CAUTION
Danger of explosion if battery is incorrectly replaced. Replace only with the same or equivalent type recommended by the equipment manufacturer. Discard used batteries according to manufacturer's instructions.

Using House Current (Mains)

Connect the supplied AC power adaptor (except for UK model) to DC IN 6V, and plug it into a wall outlet. The batteries are automatically disconnected then the display will continuously light up and then operate the unit.

- Notes**
- When the AC power adaptor is not used for a long period of time, be sure to unplug it both from the DC IN 6V jack and from a wall outlet.
 - Use the recommended Sony AC power adaptor only. The polarity of the plugs of other manufacturers may be different. Failure not to use the recommended AC power adaptor may lead to the malfunction of the unit.



- When operating the unit with house currents, do not remove the lithium battery which serve as a backup of the memory.
- When operating the unit with the batteries, remove the AC power adaptor in the following order: ① disconnect from the wall outlet and ② disconnect from the DC IN 6V jack of the unit.

Setting the Clock

The display will flash "0:00" when the batteries are first installed. Set the time when the CD or radio is turned off.

To Set Local Time

- Press **WORLD/LOCAL** to display "LOCAL".
- While holding down **CLOCK/TRACK** • **ENTER**, press either **TUNING TIME SET** + or - till the correct time appears in the display. When you release **CLOCK/TRACK** • **ENTER**, the clock begins to operate and ":" flashes.
- 24-hour system: "0:00" = midnight. "12:00" = noon.
- To set the current time rapidly, keep pressing the + or - button while holding down **CLOCK/TRACK** • **ENTER**.
- To set the current time from zero seconds, at step 2, release **CLOCK/TRACK** • **ENTER** with the time signal.

To Set World Time

To set WORLD time, press **WORLD/LOCAL** to display "WORLD", then set it, upon calculating the parallel time with the time-zone map, using **CLOCK/TRACK** • **ENTER** and **TUNING TIME SET** + or -, until the desired time appears.

If you change either of Local Time or World Time
The two clock's are not linked, adjust the time to either one.

To change the display to the daylight saving time (summer time) indication

Press **D.S.T.** • **SUMMER T.** "☼" is displayed and the time indication changes to summer time. To cancel the summer time indication, press **D.S.T.** • **SUMMER T.** again.

Changing AM Channel Step

The channel step of this unit is factory-set to 9 kHz or 10 kHz to match the frequency allocation system of the country as listed. When needed, change the channel step before listening to the radio.

Area	Channel step
North and South American countries	10 kHz
Other countries	9 kHz

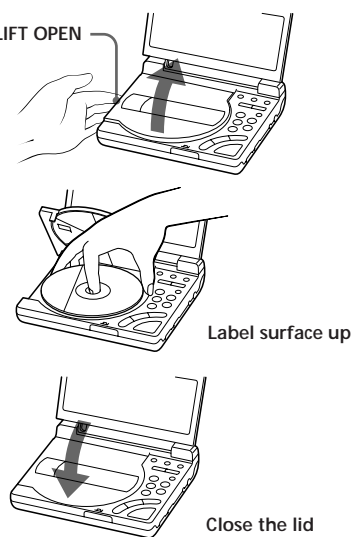
- Press **OFF ALARM RESET** to turn off the power.
- While holding down **CLOCK/TRACK** • **ENTER**, keep pressing **OFF ALARM RESET** until a beep sounds. The AM channel step will be changed. If you proceed to step 2 again, the channel step changes again.

When the AM channel step is changed, the preset stations will be erased.

Playing a Disc

An 8 cm (3-inch) CD can be played without an adaptor.

- Lift open the CD compartment lid and place a disc.



- Press **CD** ►► and the display lights "01." And the current number (01 to 99) appears in the display window. After 10 seconds, the indication becomes the current time, but the "CD ►►" indication remains.
- Adjust **VOLUME**.

Listening to the built-in speakers

The built-in speakers are located inside the lid of the unit. Open the lid to use the built-in speakers.

To	Press
Pause	CD ►►
Resume play after pause	CD ►► again
Locate the beginning of the current track (AMS*)	◀◀**
Locate the next track (AMS)	►►**
Go back at high speed	Hold down ◀◀**
Go ahead at high speed	Hold down ►►**
Locate the previous track (AMS)	◀◀ repeatedly**
Locate the succeeding track (AMS)	►► repeatedly**
Stop play	OFF ALARM RESET
Change the clock mode or track mode	CLOCK/TRACK • ENTER

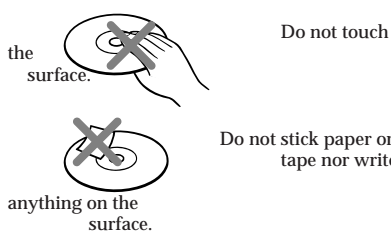
*AMS = Automatic Music Sensor

**These operations are possible during both play and pause.

• To handle compact discs



Not this way



Notes

- Do not open the CD compartment lid during playback, otherwise, the disc will be damaged. Be sure to stop the disc first.
- When you press **CD** ►►, if there is no disc in the CD compartment, the "00" indication flashes for about 3 seconds and the unit will be turned off.
- If the CD alarm times comes during listening to the CD, the track changes to that preset by pressing **BAND** • **WAKE UP TRACK**.

Operating the Radio

Manual Tuning

- Press **RADIO SLEEP**.
- Press **BAND** • **WAKE UP TRACK** to select the band, **FM** or **AM**. Each press of **BAND** • **WAKE UP TRACK** changes the band.
- Tune in a station by pressing **TUNING TIME SET** + or -.
- Adjust **VOLUME**.

Listening to the built-in speakers

The built-in speakers are located inside the lid of the unit. Open the lid to use the built-in speakers.

When tuning in FM

The FM frequency is raised or lowered by a step of 0.05 MHz, but the display is raised or lowered by a step of 0.1 MHz. There may be a same station on several frequencies, choose the best received frequency. (Example: Frequency 88.00 MHz and 88.05 MHz is displayed as "88.0 MHz.")

- To turn off the radio, press **OFF ALARM RESET**.
- To improve radio reception
FM: Extend the telescopic antenna to improve FM reception.
AM: Rotate the unit horizontally for optimum reception. A ferrite bar antenna is built into the unit. Do not operate over a steel desk or surface, as this may lead to an interference of the reception.
- Check the station you are listening to, press **RADIO SLEEP**. The band and frequency appear for five seconds.

Preset Tuning

You can preset up to five FM/AM stations (one station for each memory preset button 1 to 5).

Note

When you use the radio alarm, preset the station you want for the alarm in memory preset button 1, as the memory preset 1 station is the wake up station.

Example: To set AM 1260 kHz in memory presets button 2.

- Tune in the AM 1260 kHz (See "Manual Tuning").
- While holding down **CLOCK/TRACK** • **ENTER**, press the desired preset button. The preset number appears in the display and station is preset.



While "P" are flashing, press the preset button.



After presetting the indication become the current time.

- To change the preset station, preset a new station in the number of which you want to change the station. The previous station is cancelled.

Tuning in a Preset Station

- Press **RADIO SLEEP**.
- Press memory presets number button of the station you want to tune in.
- Adjust **VOLUME**.

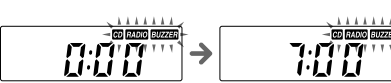
Setting the Alarm

You can set the CD, radio and buzzer alarms at the preset time. Before setting the alarm, be sure to set the clock. (See "Setting the Clock.") After setting the alarm time, then set the type of alarm.

Setting the Alarm Time

To set the CD alarm

- While holding down **TIME-ALARM**, press **TUNING TIME SET** + or - till the desired time appears in the display.



When you release **TIME-ALARM**, the alarm time is set and the indication becomes the current time.

- While holding down **BAND** • **WAKE UP TRACK**, set the desired track by pressing **TUNING TIME SET** + or - . When you release **BAND** • **WAKE UP TRACK**, the track is preset and the indication becomes the current time.



Note

The CD player is preset to start with any track numbers, it will always start with the chosen track even though you change the CD, unless you change **BAND** • **WAKE UP TRACK**.

To set the RADIO/BUZZER alarm

- While holding down **TIME-ALARM**, press either **TUNING TIME SET** + or - till the desired time appears in the display. When you release **TIME-ALARM**, the alarm time is set and the indication becomes the current time.

Setting the Alarm Mode

Before setting alarm-mode, be sure to set the alarm time. (See "Setting the Alarm Time.")

- Press **ALARM-MODE** till the alarm you want appears in the display. Each time you press **ALARM-MODE**, the alarm indication changes as follows.
No alarm indication → CD → RADIO → BUZZER

The selected alarm sounds at the time you set, and automatically turns off after 60 minutes.

- To stop the alarm, press **OFF ALARM RESET**. The alarm will sound at the same time the next day.
- To cancel the alarm, press **ALARM-MODE** repeatedly until CD, RADIO, or BUZZER indication does not appear.
- To check the alarm time you set, press the **TIME-ALARM**.

Notes

- When you set the CD alarm, if there is no disc in the CD player, the buzzer will sound at the time you set.
- The buzzer sound level is fixed, and independent of volume.

To Doze for a Few More Minutes

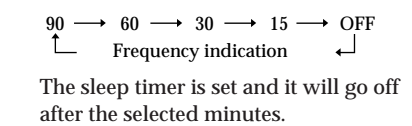
- Press **SNOOZE**. The CD, radio or buzzer will shut off but will automatically come on again after about 8 minutes. You can repeat this process as many times as you want to.

- While **SNOOZE** function is operating, the alarm indication flashes.

Setting the Sleep Timer

By setting the sleep timer, you can fall asleep to the radio sound. The radio turns off after the selected time.

- Turn on the radio.
- Press **RADIO SLEEP** repeatedly until the desired operating time is displayed. Each time you press **RADIO SLEEP**, the sleep timer indication changes as follows.



The sleep timer is set and it will go off after the selected minutes.

- To turn off the sleep timer before the selected time has elapsed, press **SLEEP OFF/LIGHT**.

Useful Functions

To Obtain Powerful Bass

Set **MEGA BASS** to **MID** or **MAX**. The "MEGA BASS" system produces a powerful bass with the use of a bass reflex system added to a normal speaker system.

To Light the Display-Light Function

Press **SLEEP OFF/LIGHT**, the display will light up for 10 seconds. When using house currents, the display will light up always.

Precautions

- Operate the unit on the power sources specified in "Specifications."
- The nameplate indicating voltage, etc. is located at the bottom.
- Disconnect the mains lead by grasping the plug. Never pull it by the cord.
- Do not leave the unit in a location near a heat source such as a radiator or air duct, or in a place subject to direct sunlight, excessive dust, mechanical vibration, or shock.
- Allow adequate air circulation to prevent internal heat build-up. Do not place the unit on a surface (a rug, a blanket, etc.) or near materials (a curtain) which might block the ventilation holes.
- Should any liquid or solid object fall into the unit, unplug (or remove batteries from) the unit and have it checked by a qualified personnel before operating it further.
- When the casing becomes soiled, clean it with a soft cloth dampened with a mild detergent solution. Never use abrasive cleansers or chemical solvents, as they may mar the casing.
- The unit is not disconnected from the AC power source (mains) as long as it is connected to the wall outlet, even if the unit itself has been turned off.

If you have any question, please consult your nearest Sony dealer.

Troubleshooting

Should any problem occur with the unit, make the following checks to determine whether or not servicing is required. If the problem persists, consult the nearest Sony dealer.

The CD player does not operate.

- If "00" appears in the display, replace all four batteries.
- Did you close the compartment lid completely?
- Did you place a disc correctly? The disc should be placed with the labelled surface up.
- Dusty or defective disc—Clean the disc with an optional cleaning cloth. Wipe the disc from the center out.

Skipping of sound in CD operation

- Dusty or defective disc—Clean the disc.
- Dirty lens—Clean the lens with a commercially available blower.
- Strong vibration

The CD, radio or buzzer alarm does not come on at the preset time.

- Did you set the current time correctly?
- Did you set the alarm time correctly?
- Did you place a disc?
- Did you close the CD compartment lid completely?
- Did you preset the station you want for the wake up station in preset button 1?
- Did you adjust the volume? If the volume is turned down completely, the CD or radio alarm is not heard.

Specifications

CD player section

System: Compact disc digital audio system
Laser diode properties: Material: GaAlAs
Wavelength: 780 nm
Emission duration: Continuous
Laser output: Less than 44.6 μW
(This output is the value measured at a distance of about 200 mm from the objective lens surface on the optical pick-up block with 7mm aperture.)

Frequency response: 20-20,000 Hz ±1 dB
Wow and flutter: Below measurable limit

Radio section

Band	Frequency	Channel Step
FM	87.5-108 MHz	0.1 MHz
AM	530-1,610 kHz	10 kHz
FM	87.5-108 MHz	0.05 MHz *
AM	531-1,602 kHz	9 kHz

* The frequency display is raised or lowered by steps of 0.1 MHz. (Example: Frequency 88.05 MHz is displayed as "88.0 MHz.")

General

Time display: 24-hour system
Speaker: Full range: 4 cm x 4 cm (1 5/8 x 2 inches) 8 ohms

Output: ① Jack (stereo minijack)

Power outputs: 300mW + 300mW (at 10% harmonic distortion)

Power requirements: 6V DC, four LR6 (size AA) batteries
Backup for Clock: 3V DC, one CR 2025 lithium battery

External power source: DC IN 6V

Dimensions: Approx. 166.5x46 x 162 mm (w/h/d)

(Approx. 6 5/8 x 1 13/16 x 6 1/2 inches) incl. projecting parts and controls

Mass: Approx. 705.5g (1lb 9oz) incl. batteries
Supplied accessory: Stereo headphones (1)
AC power adaptor (1)
Sony CR 2025 Lithium battery (1)

Design and specifications are subject to change without notice.