

# Radio Cassette Player

http://www.sony.net/

\*WALKMAN is a trademark of Sony Corporation.

## Operating Instructions



WM-FX888

Sony Corporation ©2001 Printed in Malaysia

English

### WARNING

To prevent fire or shock hazard, do not expose the unit to rain or moisture.

Do not install the appliance in a confined space, such as a bookcase or built-in cabinet.

- To prevent fire, do not cover the ventilation of the apparatus with newspapers, tablecloths, curtains, etc. And don't place lighted candles on the apparatus.
- To prevent fire or shock hazard, do not place objects filled with liquids, such as vases, on the apparatus.
- Certain countries may regulate disposal of the battery used to power this product. Please consult your local authority.

### Preparations

Prepare a dry battery (not supplied) or the rechargeable battery (supplied).

#### Dry Battery A

Attach the supplied battery case, and then insert one R6 (size AA) battery with correct polarity.

#### Note

- For maximum performance we recommend that you use a Sony alkaline battery.

#### Rechargeable Battery B

- Insert the supplied rechargeable battery (NC-6WM) into the rechargeable battery compartment with correct polarity.
- Connect the supplied AC power adaptor to the charging stand, plug in the AC power adaptor to the house current (mains).
- Place the main unit on the charging stand. The CHARGE lamp will light up. Full charging takes about 10 hours.

You can charge the battery about 300 times.

#### Note

- Do not use the unit while charging. Remove the unit from the charging stand when using it.
- If you operate the unit while charging, the battery will not be charged.
- If you operate the unit while charging, it may cause malfunction.
- Do not place the unit on the charging stand without the rechargeable battery. Otherwise, it may cause malfunction.

#### Note on the AC power adaptor

Use only the supplied AC power adaptor. Do not use any other AC power adaptor.

#### When to replace/charge the battery C

Replace or charge the battery when "□" flashes in the display.

Battery life (Approx. hours) (JEITA\*)

Sony alkaline LR6 (SG)**	
Tape playback	36
Radio reception	32

#### Rechargeable battery (NC-6WM)

Rechargeable battery (NC-6WM)	
Tape playback	10
Radio reception	10

#### Sony alkaline LR6 (SG)\*\* and Rechargeable NC-6WM

Sony alkaline LR6 (SG)** and Rechargeable NC-6WM	
Tape playback	45
Radio reception	42

\* Measured value by the standard of JEITA (Japan Electronics and Information Technology Industries Association). (Using a Sony HF series cassette tape)  
 \*\*When using a Sony LR6 (SG) "STAMINA" alkaline dry battery (produced in Japan).

#### Note

- The battery life may be shorter depending on the operating condition, the surrounding temperature and battery type.

### Playing a Tape D

- Insert a cassette and if the HOLD function is on, slide the HOLD switch in the opposite direction of the arrow to unlock the controls.
- Press ◀▶(play) • ■(stop) on the remote control and adjust the volume with VOL. (On the main unit, press ◀▶•REPEAT.)

When adjusting the volume on the main unit Set the VOL control on the remote control at maximum.

When adjusting the volume on the remote control Set the VOL control on the main unit to around 6.

#### Operation on the remote control

To	Press
Switch playback to the other side	◀▶•■ for 2 seconds or more during playback
Stop playback	◀▶•■ once during playback
Repeat the current track (Repeat Single Track function)	◀▶•■ twice during playback To stop a single repeat, press ◀▶•■ once.

#### Operation on the main unit

To	Press
Switch playback to the other side	◀▶•REPEAT during playback
Stop playback	■(stop)
Repeat the current track (Repeat Single Track function)	◀▶•REPEAT for 2 seconds or more during playback To stop a single repeat, press it again.

#### Other tape operations

To	Press
Fast forward*	FF
Rewind*	REW
Play the next track/succeeding 9 tracks from the beginning (AMS**)	FF once/repeatedly during playback
Play the current track/previous 8 tracks from the beginning (AMS**)	REW once/repeatedly during playback
Play the other side from the beginning (Skip Reverse function)	FF for 2 seconds or more during stop
Play the same side from the beginning (Rewind Auto Play function)	REW for 2 seconds or more during stop

\* If ◀▶•■ on the remote control is pressed during fast forward or rewind, the Walkman switches to playback.  
 \*\*Automatic Music Sensor

#### Adjusting playback modes

To select playback direction mode Press MENU repeatedly to set the cursor in the display to MODE. Then press SET to select the desired mode.

To play	Select
both sides repeatedly	↻
both sides once from the FWD side	↻

#### To skip a long space between tracks (BL SKIP\* function)

- On the main unit:
- Press MENU repeatedly to set the cursor in the display to BL SKIP.
  - Press SET to show "Ⓞ".

On the remote control:

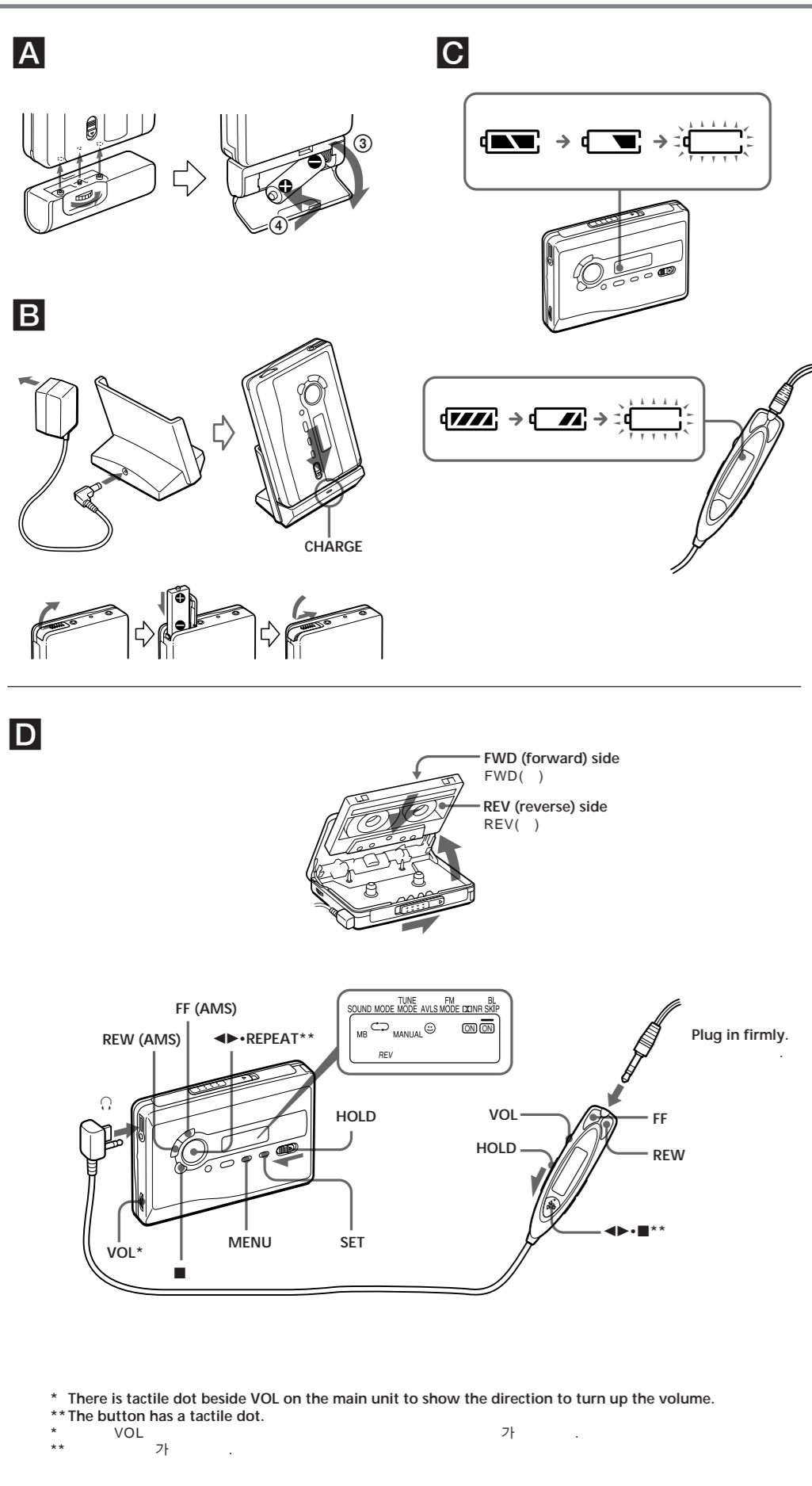
- Press MODE repeatedly to show "BL SKIP".

\* The tape is fast-forwarded to the next track if there is a blank space longer than 12 seconds.

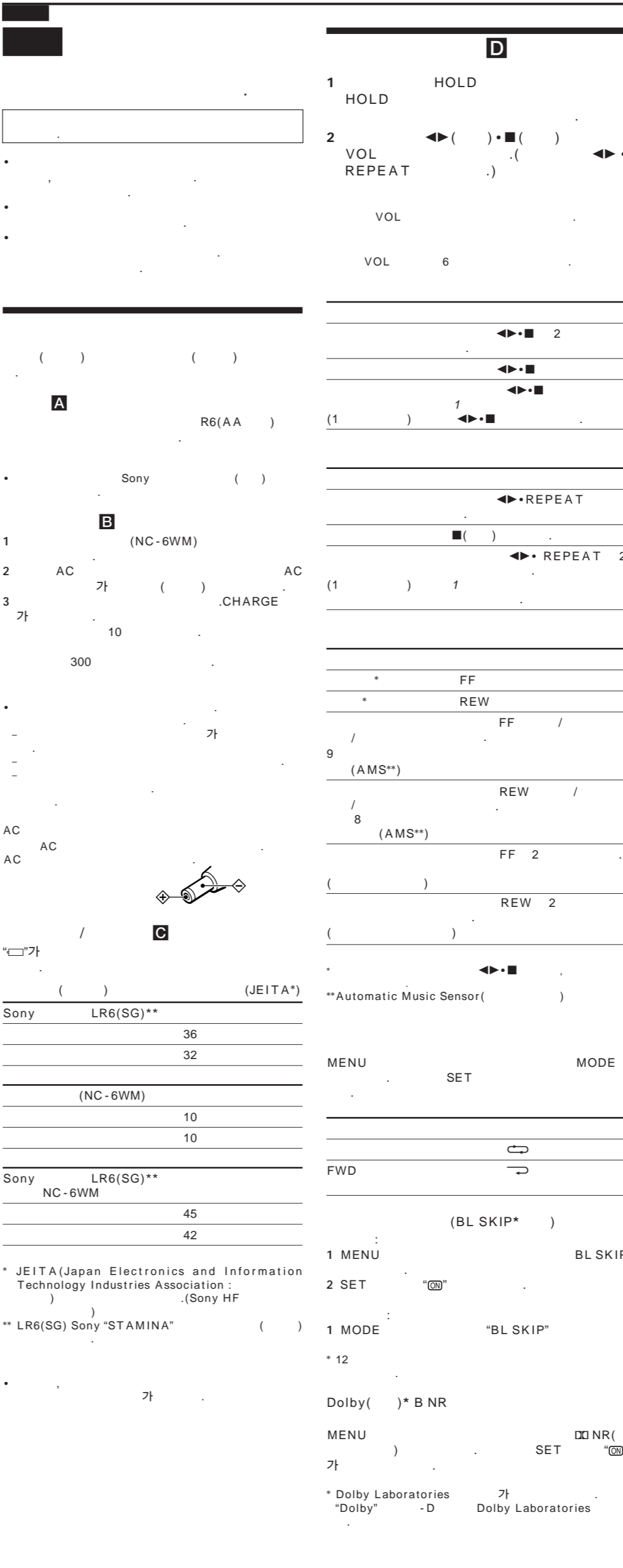
#### To play a tape recorded with Dolby\* B NR system

Press MENU repeatedly to set the cursor in the display to NR (Dolby noise reduction). Then press SET to show "Ⓞ".

\* Manufactured under license from Dolby Laboratories. "Dolby" and the double-D symbol are trademarks of Dolby Laboratories.

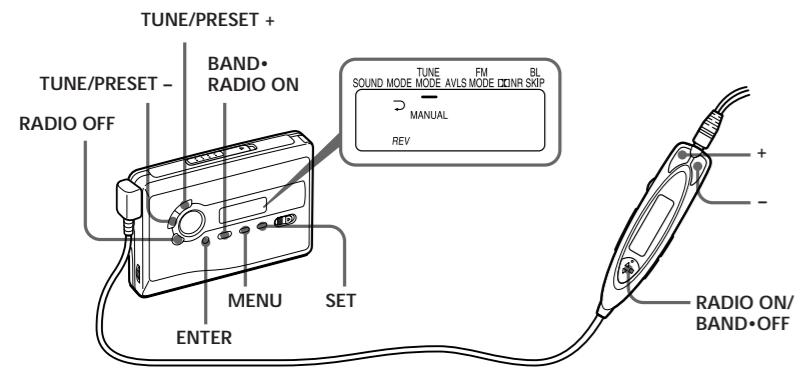


\* There is tactile dot beside VOL on the main unit to show the direction to turn up the volume.  
 \*\*The button has a tactile dot.  
 \* VOL 가  
 \*\* 가

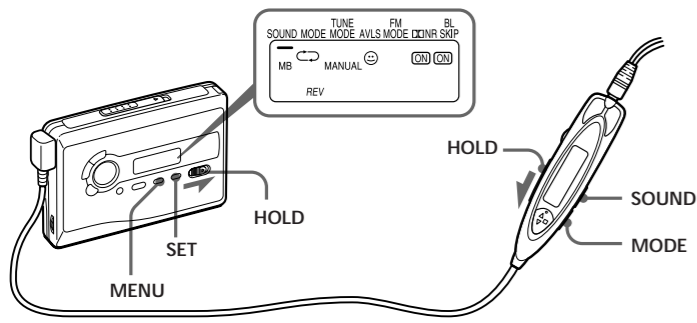


(turn over)

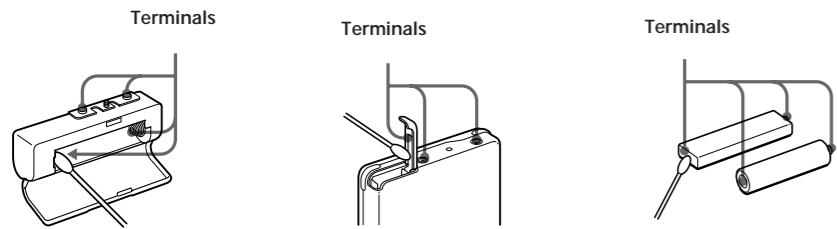
E



F



G



### Specifications

#### Radio section

**Frequency range**  
 FM: 87.5 - 108 MHz  
 76.0 - 90.0 MHz (Japan)  
 AM: 530 - 1 710 kHz (North, Central, and South America)  
 531 - 1 602 kHz (other countries)  
 531 - 1 710 kHz (Japan)

#### Tape section

**Frequency response (Dolby NR off)**  
 Playback: 40 - 15 000 Hz  
**Output**  
 Headphones (☞) jack  
 Load impedance 8 - 300 Ω

#### General

**Power requirements**  
 1.5 V  
 Rechargeable battery  
 One R6 (size AA) battery  
**Dimensions (w/h/d)**  
 Approx. 108.4 × 77.7 × 23.0 mm  
 (4 1/4 × 3 1/4 × 3/8 inches)  
**Mass**  
 Approx. 160 g (5.7 oz)  
**Supplied accessories**  
 • AC power adaptor (1)  
 • Battery case (1)  
 • Stereo headphones or earphones with remote control (1)  
 • Charging stand (1)  
 • Rechargeable battery (NC-6WM, 1.2 V, 600 mAh, Ni-Cd) (1)  
 • Rechargeable battery carrying case (1)  
 • Carrying pouch (1)

Design and specifications are subject to change without notice.

FM: 87.5 - 108 MHz 76.0 - 90.0 MHz ( )	1.5 V
AM: 530 - 1 710 kHz ( ) 531 - 1 602 kHz ( 가) 531 - 1 710 kHz ( )	R6(AA ) (w/h/d) 108.4 × 77.7 × 23.0 mm
(Dolby NR ) : 40 - 15 000 Hz	160 g
(☞) 8 - 300 Ω	• AC (1) • (1) • (1) • (1) • (1)

English

## Listening to the Radio E

- Press BAND•RADIO ON to turn on the radio.
  - Press BAND•RADIO ON repeatedly to select AM, FM1, or FM2.
  - Press MENU on the main unit repeatedly and set "—" (the cursor) in the display to TUNE MODE.
  - For manual tuning
    - Press SET to choose MANUAL.
    - Press TUNE/PRESET + or - repeatedly to tune in to the desired station.  
Hold down TUNE/PRESET + or - for a few seconds to scan for stations.
- For preset tuning**
- Press SET to choose PRESET.
  - Press TUNE/PRESET + or - repeatedly to recall the desired preset station.  
To use preset tuning, preset stations first (see "Presetting Radio Stations").

### To turn off the radio

Press RADIO OFF.

### To improve the broadcast reception

- For AM: Reorient the unit itself.
- For FM: Extend the remote control cord (antenna). If the reception is still not good, press MENU repeatedly to set the cursor in the display to FM MODE. Then press SET to choose from "MONO" (monaural), "LOCAL" or none (stereo) for best reception.

### To operate from the remote control

To turn on the radio, press RADIO ON/BAND•OFF for more than one second (while the tape is in stop mode only).  
 To select the band, press RADIO ON/BAND•OFF for more than one second while the radio is on.  
 To tune in or recall a preset station, press + or -.  
 To turn off the radio, press RADIO ON/BAND•OFF.

## Presetting Radio Stations E

You can store radio stations into the unit's memory. You can preset up to 32 stations — 12 each for FM1 and FM2 and 8 for AM (for the JPN area\*, up to 16 stations — 8 each for FM and AM).

\* See "Receiving Stations Outside Your Country (Excluding European, Saudi Arabian, and Chinese model)".

### Tuning in to and Storing Radio Stations Automatically (Auto-Memory Scanning function)

- Press BAND•RADIO ON to turn on the radio.
- Press BAND•RADIO ON repeatedly to select AM, FM1, or FM2.
- Press ENTER until "A" appears in the display. The Walkman starts searching and storing stations. Then the preset number appears.

#### Note

- Do not remove the power sources until all the stations are stored.

### Storing Radio Stations Manually (Manual-Memory function)

You can preset the stations in any order.

- Press BAND•RADIO ON to turn on the radio.
- Press BAND•RADIO ON repeatedly to select AM, FM1, or FM2.
- Press ENTER.
- The frequency digits will flash in the display.
- Press TUNE/PRESET + or - repeatedly to tune in to the desired station and press ENTER.  
The preset number will flash in the display.
- Press TUNE/PRESET + or - repeatedly to select the desired preset number and press ENTER.  
The station is preset to the number of your choice.

#### Notes

- If you cannot complete step 4 or 5 while the indications are flashing, repeat from step 3.
- If you preset a new station to the same preset number, the previously stored station will be erased.

### To cancel the stored station

Follow the procedure above and in step 4, instead of tuning in to a station, press and hold TUNE/PRESET + or - until "----" is displayed. Press ENTER while "----" is flashing. The preset number will flash in the display.  
 Press TUNE/PRESET + or - repeatedly to select the preset number you want to cancel and press ENTER.

## Receiving Stations Outside Your Country (Excluding European, Saudi Arabian, and Chinese model)

- Press BAND•RADIO ON to turn on the radio.
- Press ENTER.  
The frequency digits will flash in the display.
- Press and hold BAND•RADIO ON until "Eur", "JPN", or "USA" flashes.
- Press BAND•RADIO ON repeatedly to select "Eur", "JPN", or "USA" and press ENTER.
- Tune in to and store stations as necessary following the procedure of "Listening to the Radio" and "Presetting Radio Stations".

### Area indication and frequency range

Area*	Frequency range FM (MHz)	AM(kHz)
Eur	87.5 - 108	531 - 1 602
JPN	76 - 90	531 - 1 710
USA	87.5 - 108	530 - 1 710

\* Eur : European and other countries  
 JPN : Japan  
 USA : USA, Canada, and Central and South America

## Using Other Functions F

### Locking the Controls — HOLD Function

Slide the HOLD switch in the direction of the arrow to lock the controls of the Walkman or the remote control.

### Emphasizing Sound

#### On the main unit:

- Press MENU repeatedly to set the cursor in the display to SOUND.
- Press SET repeatedly to select the sound emphasis of your choice.

#### On the remote control:

- Press SOUND repeatedly. With each press, the indications change.

The indications change as follows:

- RV : Sound Revitalizer.  
Emphasizes treble sound.
- MB : Mega Bass.  
Emphasizes bass sound (moderate effect).
- GRV : Groove.  
Emphasizes bass sound (strong effect).
- no message : normal (no effect).

#### Note

- If the sound is distorted with the mode "GRV", turn down the volume of the main unit or select other modes.

### Protecting Your Hearing — AVLS (Automatic Volume Limiter System)

#### On the main unit:

Press MENU repeatedly in the playback, stop or radio mode to set the cursor to AVLS in the display. Then press SET to show "☺".

#### On the remote control:

Hold down MODE until "AVLS" appears in the display.

### To cancel the AVLS function

Press SET so that "☺" disappears from the display on the main unit.  
 On the remote control, hold down MODE again until "AVLS" disappears.

#### Note

- The AVLS setting will be canceled when you replace the battery.

## Precautions

### On charging

- Remove the AC power adaptor from the wall outlet as soon as possible after the rechargeable battery has been charged. Overcharging may damage the rechargeable battery.
- The charging stand and the rechargeable battery may become warm during charging, but this is not a problem.
- Do not tear off the film on the rechargeable battery.
- Use only the supplied charging stand to charge the supplied rechargeable battery.
- Be sure not to short-circuit the battery. When you carry it with you, use the supplied carrying case. If you are not using the case, do not carry the battery with other metallic objects such as keys, rings in your pocket.
- If the rechargeable battery is new or has not been used for a long time, it may not be charged completely until you use it several times.

### On batteries

- Do not charge a dry battery.
- Do not carry the dry or rechargeable batteries with coins or other metallic objects. It can generate heat if the positive and negative terminals of the batteries are accidentally contacted by a metallic object.
- When you do not use the Walkman for a long time, remove the battery to avoid any damage caused by battery leakage and subsequent corrosion.

### On handling

- Do not drop the unit or give a shock to the unit, or it may cause a malfunction.
- Do not leave the unit in a location near heat sources, or in a place subject to direct sunlight, excessive dust or sand, moisture, rain, mechanical shock, or in a car with its windows closed.
- The LCD display may become hard to see or slow down when using the unit at high temperatures (above 40°C/104°F) or at low temperatures (below 0°C/32°F). At room temperature, the display will return to its normal operating condition.
- Do not use cassettes longer than 90 minutes except for long continuous playback.
- If the unit has not been used for long period of time, set it in the playback mode and warm it up for a few minutes before you start using again.

### On the remote control

Use the supplied remote control only with this unit.

### On headphones/earphones

#### Road safety

Do not use headphones/earphones while driving, cycling, or operating any motorized vehicle. It may create a traffic hazard and is illegal in some areas. It can also be potentially dangerous to play your headphones/earphones at high volume while walking, especially at pedestrian crossings.  
 You should exercise extreme caution or discontinue use in potentially hazardous situations.

### Preventing hearing damage

Do not use headphones/earphones at high volume. Hearing experts advise against continuous, loud and extended play. If you experience a ringing in your ears, reduce volume or discontinue use.

### Caring for others

Keep the volume to a moderate level. This will allow you to hear outside sounds and to be considerate to the people around you.

### On maintenance

#### To clean the tape head and path

Use the cleaning cassette CHK-1W/C-1KW (not supplied) every 10 hours of use.  
 Use only the recommended cleaning cassette.

#### To clean the exterior

Use a soft cloth slightly moistened in water. Do not use alcohol, benzine or thinner.  
 Clean the headphones/earphones and remote control plugs periodically with a cotton swab or a soft cloth as illustrated.  
 Clean the terminals periodically with a cotton swab or a soft cloth as illustrated.

## 1 BAND•RADIO ON E

- BAND•RADIO ON
- BAND•RADIO ON AM, FM1 FM2
- MENU "—" ( ) TUNE MODE

- SET MANUAL
- TUNE/PRESET +

TUNE/PRESET +

- SET PRESET
- TUNE/PRESET +

"LOCAL" SET

RADIO OFF

- AM : ( )
- FM : ( )

MENU FM MODE "MONO" ( )

"LOCAL" SET ( )

RADIO ON/BAND•OFF 1 ( 가 )

ON/BAND•OFF 1 가 RADIO

RADIO ON/BAND•OFF +

RADIO ON/BAND•OFF

32 — FM1 FM2 12 , AM 8 (JPN \* 16 — FM AM 8)

" " ( )

( - )

- BAND•RADIO ON
- BAND•RADIO ON AM, FM1 FM2
- ENTER "A"가 ENTER Walkman 가

가

( )

- BAND•RADIO ON
- BAND•RADIO ON AM, FM1 FM2
- ENTER 가
- TUNE/PRESET + ENTER 가
- TUNE/PRESET + ENTER

가

가

3 4 5

가

가

4 TUNE/PRESET + "----" 가

TUNE/PRESET + ENTER

ENTER

( , )

- BAND•RADIO ON
- ENTER 가

- "Eur", "JPN" "USA"가 BAND•RADIO ON

- BAND•RADIO ON "Eur", "JPN" "USA" ENTER

" " " " (40°C ) (0°C) LCD( )

• 90

\* FM(MHz) AM(kHz)

Eur 87.5 - 108 531 - 1 602

JPN 76 - 90 531 - 1 710

USA 87.5 - 108 530 - 1 710

\* Eur : 가

JPN : 가

USA : 가

1 MENU SOUND

2 SET 10

1 SOUND 가

RV : Sound Revitalizer( ),

MB : Mega Bass ( )

GRV : Groove. ( )

" " ( )

• "GRV" 가

— AVLS ( )

SET "☺"가 AVLS MENU

"AVLS"가 MODE

AVLS "☺"가 SET MODE

"AVLS"가

AVLS

• AVLS

가

가 AC

가

가

가

가

가

가

가

가

가

가