

Operating Instructions
Before operating the unit, please read this manual and "User's Guide/Troubleshooting" (separate volume) thoroughly, and retain them for future reference.

© 2006 Sony Corporation Printed in Japan 2-675-571-11 (1)



Checking the accessories supplied

- Battery charger BC-CS3 (1)
- Rechargeable battery pack NP-FR1 (1)/Battery case (1)
- USB, A/V, DC IN cable for multi-use terminal (1)
- Wrist strap (1)
- CD-ROM (Cyber-shot application software) (1)
- Operating instructions: "Read This First" (this manual) (1)
- Operating instructions: "User's Guide/Troubleshooting" (1)

A "Memory Stick Duo" is not supplied. The camera has its own internal memory (58 MB), however, purchase of a "Memory Stick Duo" is recommended for shooting more images.

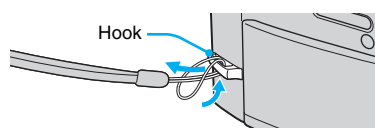
"Memory Stick Duo": you can use a "Memory Stick Duo" with your camera.

"Memory Stick": you cannot use a "Memory Stick" with your camera.

Other memory cards cannot be used.
• For details on "Memory Stick Duo" → "User's Guide/Troubleshooting" (page 104)

Notes

- Charge the battery pack (supplied) before using the camera for the first time.
- The LCD screen is manufactured using extremely high-precision technology so over 99.99% of the pixels are operational for effective use. However, there may be some tiny black points and/or bright points (white, red, blue or green in color) that constantly appear on the LCD screen. These points are normal in the manufacturing process and do not affect the recording in any way.

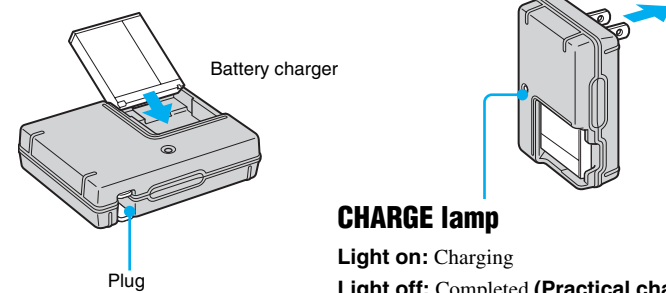


The camera is a precision instrument. Be careful not to bump the lens or the LCD screen, or not to apply force to it. Attach the wrist strap to prevent the camera from damage by being dropped, etc.

Additional information on this product and answers to frequently asked questions can be found in our Customer Support Website.

1 Prepare the battery pack

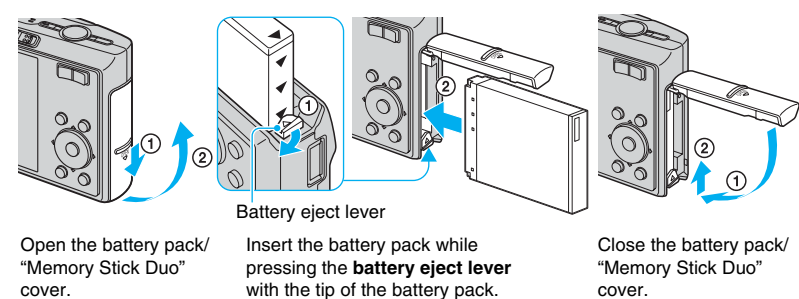
- 1 Insert the battery pack.**
Push the battery pack gently until it clicks into place.
- 2 Lift out the inlet plug and connect to the wall outlet (wall socket).**



CHARGE lamp
Light on: Charging
Light off: Completed (Practical charge)
If you continue charging the battery pack for about one more hour (until it is fully charged), the charge will last slightly longer.

- Connect the battery charger to an easily accessible wall outlet (wall socket) close by.
- Even if the CHARGE lamp is not lit, the battery charger is not disconnected from the AC power source (mains) as long as it is connected to the wall outlet (wall socket). If some trouble occurs while using the battery charger, immediately shut off the power by disconnecting the plug from the wall outlet (wall socket).
- When charging is finished, disconnect the battery charger from the wall outlet (wall socket), and remove the battery pack from the battery charger.
- The time required to fully charge the battery pack (supplied) from when it is completely discharged at a temperature of 25°C (77°F) is approximately 350 min., and the practical charging time is approximately 290 min. Charging may take longer under certain circumstances or conditions.

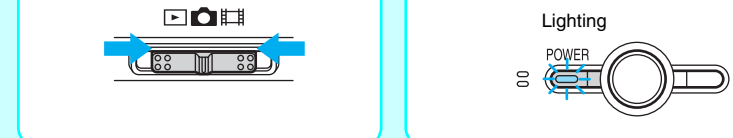
3 Insert the charged battery pack.



Open the battery pack/"Memory Stick Duo" cover.
Insert the battery pack while pressing the battery eject lever with the tip of the battery pack.
Close the battery pack/"Memory Stick Duo" cover.

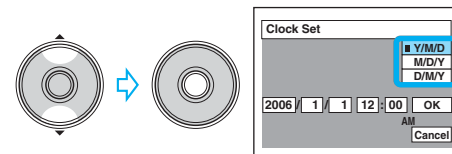
2 Turn the camera on/set the clock

- 1 Select**
- 2 Open the lens cover or press the POWER button.**

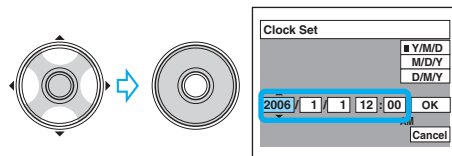


3 Set the clock with the control button.

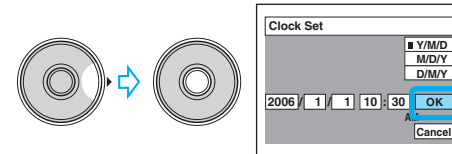
- Select the date display format with , then press .



- Select each item with and set the numeric value with , then press .

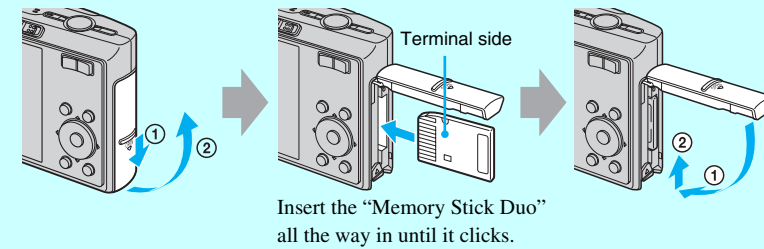


- Select [OK] with , then press .



• To cancel, select [Cancel] and press .

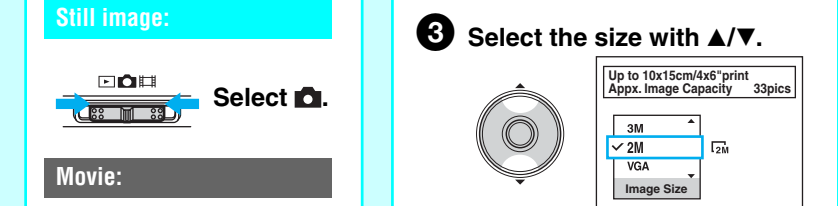
3 Insert a "Memory Stick Duo" (not supplied)



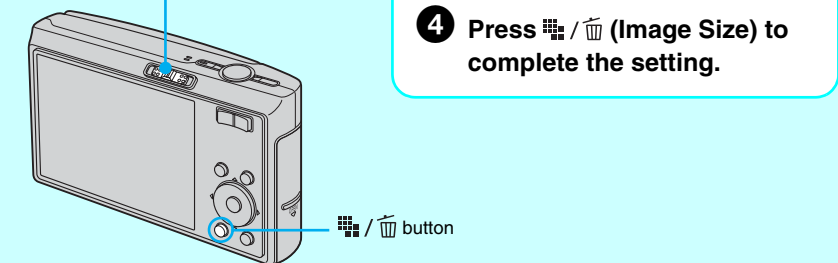
When there is no "Memory Stick Duo" inserted
The camera records/plays back images using the internal memory (58 MB). → "User's Guide/Troubleshooting" (page 25)

4 Select the image size for use

- 1 Select a mode.**
- 2 Press** (Image Size).
- 3 Select the size with .**
- 4 Press** to complete the setting.



• The screen above is displayed for still images.
• For movies, select [640(Fine)] ("Memory Stick PRO Duo" only), [640(Standard)] or [160].

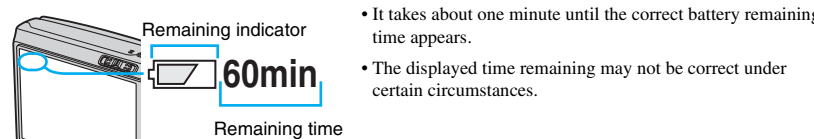


Using the AC Adaptor

You can connect the camera to a wall outlet (wall socket) using the AC-LS5K AC Adaptor (not supplied). → "User's Guide/Troubleshooting" (page 18)

To check the remaining battery time

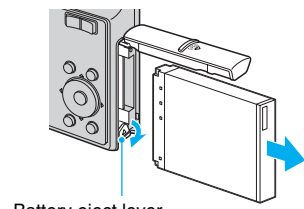
Open the lens cover or press POWER button to turn on and check the time on the LCD screen.



- It takes about one minute until the correct battery remaining time appears.
- The displayed time remaining may not be correct under certain circumstances.

To remove the battery pack

Open the battery pack/"Memory Stick Duo" cover and slide the battery eject lever in the direction of the arrow. Grasp the edges of the battery pack to pull the battery pack out. To avoid dropping the battery pack, do not hold the camera with the battery slot facing down when the battery eject lever is out.



To use your camera abroad — Power sources

You can use your camera, the battery charger (supplied), and the AC-LS5K AC Adaptor (not supplied) in any country or region where the power supply is within 100 V to 240 V AC, 50/60 Hz.

- Do not use an electronic transformer (travel converter), as this may cause a malfunction.

To change the date and time

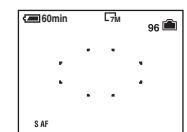
Select [Clock Set] in the (Setup) screen and perform the procedure in step 3 above. → "User's Guide/Troubleshooting" (pages 51 and 62)

On the clock display

- Midnight is indicated as 12:00 AM, and noon as 12:00 PM.
- If you selected [D/M/Y] in step 3-1, set the time on a 24-hour cycle.

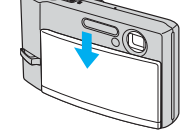
When turning on the power

- If you do not set the clock, the Clock Set screen will appear every time the camera is turned on.
- The following screen appears when the camera is turned on for the second time or afterwards.



When opening the lens cover

- When opening the lens cover, be careful not to touch the lens.



To turn off the power

Close the lens cover or press the POWER button again.

- If you do not operate the camera for approximately three minutes when it is powered by battery pack, the camera turns off automatically to prevent wearing down the battery pack (Auto power-off function).

Changing the language setting

You can change the screen display to show messages in a specified language. To change the language setting, press MENU to display the menu screen. Select (Setup) with the control button, then select [Language] in (Setup1), and select the desired language. → "User's Guide/Troubleshooting" (page 59)

On still image sizes

For details on the image size → "User's Guide/Troubleshooting" (page 15)

The default settings are marked with .

Image size	Guidelines	No. of images	Printing
7M	Up to A3/11x17" print	Less	Fine
3:2 ¹⁾	Match 3:2 Aspect Ratio		
5M	Up to A4/8x10" print	More	Rough
3M	Up to 13x18cm /5x7" print		
2M	Up to 10x15cm /4x6" print		
VGA	For E-mail		
16:9 ²⁾	Display On 16:9 HDTV ³⁾		

- 1) Images are recorded in 3:2 aspect ratio, same as photograph printing paper or postcards, etc.
- 2) Both edges of the image may be cut off when printing. → "User's Guide/Troubleshooting" (page 98)
- 3) By using a Memory Stick slot or USB connection, you can enjoy images in higher quality.

On the recordable number of still images and recordable time of movies

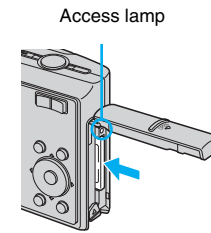
Recordable number of still images and recordable time of movies vary depending on the selected image size.

For details on recordable number or time → "User's Guide/Troubleshooting" (page 24)



- The number of recordable images and time can differ according to shooting conditions.

To remove a "Memory Stick Duo"



Open the battery pack/"Memory Stick Duo" cover, then push the "Memory Stick Duo" once.

When the access lamp is lit

Never remove the battery pack/"Memory Stick Duo" or turn off the power. The data may be corrupted.

5 Shoot images easily (Auto adjustment mode)

Holding the camera

Position the subject in the center of the focus frame.

1 Select a mode.

Still image (auto adjustment mode):

Select .

Movie:

Select .

Using the control button

• When you press the control button, the descriptions of functions are temporarily displayed. → “User’s Guide/Troubleshooting” (page 53)

Checking the last still image you shot (Quick Review)

Press on the control button.
To cancel, press again.

- The image may appear rough right after playback starts.
- To delete the image, press (Delete) and select [Delete] with on the control button, then press .

Selecting a flash mode for still images

Before step 2, press on the control button repeatedly until the desired mode is selected.

No indicator

Flash Auto
Strobes when there is insufficient light or backlight (default setting)

Flash forced on

SL
Slow synchro (Flash forced on)
The shutter speed is slow in a dark place to clearly shoot the background that is out of flash light.

Flash forced off

- Shooting distance (when [ISO] is set to [Auto])
W side: Approx. 0.1 to 3.4 m (4 to 133 7/8 inches)
T side: Approx. 0.25 to 2.7 m (9 7/8 to 106 3/8 inches)
- The flash strobes twice. The first time is to adjust the light quantity.
- While charging the flash, is displayed.

Shooting close-up (Macro/Magnifying Glass)

Before step 2, press on the control button repeatedly until the desired mode is selected.

No indicator

Macro on

Magnifying Glass on

Focal distance to the subject

Macro
Setting all the way to the W side: Approx. 8 cm or farther (3 1/4 inches or farther)
Setting all the way to the T side: Approx. 25 cm or farther (9 7/8 inches or farther)

Magnifying Glass
Locked to the W side: Approx. 1 to 20 cm (13/32 to 7 7/8 inches)

• To shoot at even closer distances than (Macro) recording, use (Magnifying Glass).

- Macro**
- Setting the zoom all the way to the W side is recommended.
 - The in-focus range becomes narrow, and the complete subject may not entirely be in focus.
 - The Auto Focus speed drops.

Magnifying Glass

- The optical zoom is locked to the W side and cannot be used.
- When you press the zoom button, the image is enlarged using the digital zoom.

2 Shoot with the shutter button.

Still image:

Press and hold the shutter button halfway down to focus.

AE/AF lock indicator
Indicator flashing
→ Indicator lit/beeps

Press the shutter button fully down.
The shutter sounds.

AF range finder frame

Movie:

Press the shutter button fully down.

To stop recording, press the shutter button fully down again.

Using the zoom

Zoom button

- When the zoom scale exceeds 3x, the camera uses the Digital Zoom function. For details on the [Digital Zoom] settings and the image quality → “User’s Guide/Troubleshooting” (page 52)
- The camera zooms slowly while shooting a movie.

Using the self-timer

Before step 2, press on the control button repeatedly until the desired mode is selected.

No indicator Not using the self-timer

Setting the 10-second delay self-timer

Setting the 2-second delay self-timer

Press the shutter button, the self-timer lamp flashes, and a beep sounds until the shutter operates.
To cancel, press again.

• If you use the 2-second delay self-timer, you may prevent blur.

If you shoot a still image of a subject that is difficult to focus on

- The shortest shooting distance is approx. 50 cm (19 3/4 inches). Shoot in the close-up (Macro) mode or Magnifying Glass mode (shown left) when you shoot a subject closer than the shooting distance.
 - When the camera cannot focus on the subject automatically, the AE/AF lock indicator changes to flashing slowly and the beep does not sound. Recompose the shot and focus again.
- Subjects difficult to focus on are:
- Distant from the camera and dark
 - Moving fast
 - The contrast between the subject and its background is poor.
 - Reflective light or with a lustrous finish
 - Flashing
 - Seen through glass
 - Backlit

To brighten up the display

→ “User’s Guide/Troubleshooting” (page 23)

Anti-blur function

The anti-blur function is equipped with the camera.
To cancel the anti-blur function, set the mode switch to other than [Auto] in (Camera) on the menu (shown upper right), then press (STEADY SHOT) button (shown above) to display the indicator. To turn on the anti-blur function, press the button again.

- When the mode switch is set to [Auto] in (Camera) on the menu, you cannot cancel the anti-blur function.
- You can change the anti-blur mode. → “User’s Guide/Troubleshooting” (page 55)

To identify items on the screen

→ “User’s Guide/Troubleshooting” (page 19)

6 Shoot still images (Scene Selection)

1 Select .

2 Press MENU.

3 Select (Camera) with , then select a mode with .

- For details on modes, see below.
- The setting is maintained even when the power is turned off.

4 Press MENU to turn off the menu.

5 Shoot with the shutter button.

To cancel the Scene Selection

Select [Auto] or [Program] with .

Scene Selection modes

The following modes are predetermined to match the scene conditions.

ISO High sensitivity Shoot without flash in low-light reducing blur	Landscape Shoot landscapes distant focus
High-speed shutter Shoot moving subject to stop action	Beach Shoot waterside scene with rich blue color
Twilight* Shoot low light scene without flash	Snow Shoot whitish scene brightly
Twilight portrait* Shoot portraits in low light with flash	Fireworks* Shoot fireworks in all their splendor
Soft snap Shoot subject with soft background	

*The shutter speed becomes slower, so using a tripod is recommended.

To use the functions set by the control button with Scene Selection

Before shooting in step 5, select the setting with the control button. Some functions are not available, depending on the Scene Selection mode. When you press the button to select functions that cannot be combined with Scene Selection, a beep sounds. → “User’s Guide/Troubleshooting” (page 29)

6 View/delete images

1 Select .

2 Select an image with .

Still image: the image size is displayed
Movie: is displayed

Movie:

To play back a movie, press .

Playback bar

Rewind/Fast forward:
(Return to normal playback:)
Volume:
Stop playback:

- Movies with the image size [160] are displayed a size smaller.

To delete images

- 1 Display the image you want to delete and press (Delete).
- 2 Select [Delete] with , then press .

To cancel the deletion
Select [Exit], then press .

To view an enlarged image (playback zoom)

Press while displaying a still image.
To undo the zoom, press .

Adjust the portion:

Cancel playback zoom:

To store enlarged images: [Trimming] → “User’s Guide/Troubleshooting” (page 50)

To play back a series of images (Slide Show)

While playing back still images, press (Slide Show). To cancel, press again.

- You can change the settings, such as the setting for Music files. For details on a variety of operations and settings for the slide show. → “User’s Guide/Troubleshooting” (page 30)

Viewing an index screen

Press (Index) and select an image with .

To return to the single-image screen, press . To display the next (previous) index screen, press .

To delete images in index mode

- 1 While an index screen is displayed, press (Delete) and select [Select] with on the control button, then press .
- 2 Select the image you want to delete with , then press to display the (Delete) indicator on the selected image.

To cancel a selection
Select an image you have previously selected for deletion, then press to delete the indicator from the image.

- 3 Press (Delete).
 - 4 Select [OK] with , then press .
- To delete all the images in the folder, select [All In This Folder] with in step 1 instead of [Select], then press .