

Active Speaker System

Operating Instructions
Mode d'emploi
Manual de instrucciones

SRS-NWM10

<http://www.sony.net/>

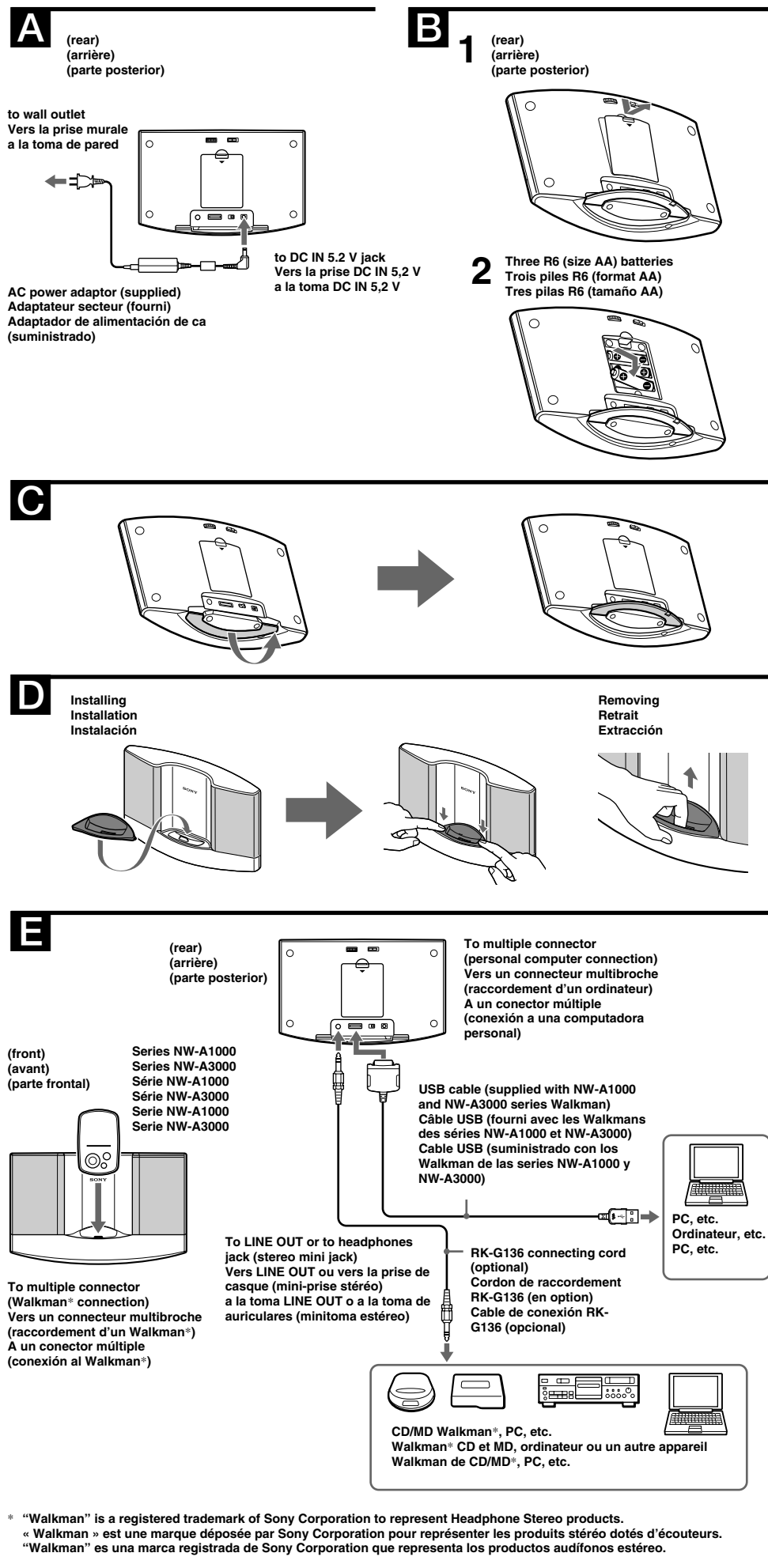
© 2005 Sony Corporation Printed in Malaysia

Owner's Record

The model number and the serial number are located on the rear of the speaker. Record the model number and the serial number in the space provided below. Refer to them whenever you call upon your Sony dealer regarding this product.

Model No. SRS-NWM10

Serial No. _____



* "Walkman" is a registered trademark of Sony Corporation to represent Headphone Stereo products.
« Walkman » est une marque déposée par Sony Corporation pour représenter les produits stéréo dotés d'écouteurs.
"Walkman" es una marca registrada de Sony Corporation que representa los productos audífonos estéreo.

English

Before operating the unit, please read this manual thoroughly and retain it for future reference.

WARNING

To reduce the risk of fire or electric shock, do not expose this apparatus to rain or moisture. To avoid electrical shock, do not open the cabinet. Refer servicing to qualified personnel only. To reduce the risk of fire, do not cover the ventilation of the apparatus with newspapers, tablecloths, curtains, etc. And do not place lighted candles on the apparatus. To reduce the risk of fire or electric shock, do not place objects filled with liquids, such as vases, on the apparatus.

Do not install the appliance in a confined space, such as a bookcase or built-in cabinet.

CAUTION

You are cautioned that any changes or modification not expressly approved in this manual could void your authority to operate this equipment.

For the customers in the U.S.A.

INFORMATION

This equipment has been tested and found to comply with the limits for a Class B digital device, pursuant to Part 15 of the FCC Rules. These limits are designed to provide reasonable protection against harmful interference in a residential installation. This equipment generates, uses, and can radiate radio frequency energy and, if not installed and used in accordance with the instructions, may cause harmful interference to radio communications. However, there is no guarantee that interference will not occur in a particular installation. If this equipment does cause harmful interference to radio or television reception, which can be determined by turning the equipment off and on, the user is encouraged to try to correct the interference by one or more of the following measures:

- Reorient or relocate the receiving antenna.
- Increase the separation between the equipment and receiver.
- Connect the equipment into an outlet on a circuit different from that to which the receiver is connected.
- Consult the dealer or an experienced radio/TV technician for help.

If you have any questions about this product, you may call: Sony Customer Information Services Center 1-800-222-7669 or <http://www.sony.com/>

Declaration of Conformity	
Trade Name	: SONY
Model No.	: SRS-NWM10
Responsible Party	: Sony Electronics Inc.
Address	: 16530 Via Esprillo, San Diego, CA 92127 USA
Telephone No.	: 858-942-2230
This device complies with Part 15 of the FCC Rules. Operation is subject to the following two conditions: (1) This device may not cause harmful interference, and (2) this device must accept any interference received, including interference that may cause undesired operation.	

Precautions

On safety

The nameplate indicating operating voltage, power consumption, etc., is located on the rear exterior.

- Before operating the system, be sure that the operating voltage of the system is identical with that of your local power supply.

Where purchased	Operating voltage
U.S.A./Canada	120 V AC, 60 Hz
Other countries	100 – 240 V AC, 50/60 Hz

- Use only the supplied AC power adaptor.
- After operating the system with the AC power adaptor, disconnect the AC power adaptor from the wall outlet if the system is not to be used for an extended period of time. Just switching the POWER switch to STANDBY does not turn the AC power adaptor off.

On operation

- Do not open the cabinet. Refer servicing to qualified personnel only.
- Should any solid object or liquid fall into the system, have the system checked by qualified personnel before operating it any further.
- Although this system is magnetically shielded, do not leave recorded tapes, watches, personal credit cards, or floppy disks with magnetic coding in front of the system for an extended period of time.

If the TV picture or monitor display is magnetically distorted

Although this system is magnetically shielded, there may be cases that the picture on some TV sets/personal computer sets may become magnetically distorted. In such a case, turn off the power of the TV set/personal computer set once, and after 15 to 30 minutes turn it on again. For the personal computer set, take the appropriate measures such as data storage before turning it off. When there seems to be no improvement, locate the system further away from the TV set/personal computer set. Furthermore, be sure not to place objects in which magnets are attached or used near the TV set/personal computer set, such as audio racks, TV stands, toys etc. These may cause magnetic distortion to the picture due to their interaction with the system.

On placement

- Do not set the speaker in an inclined position.
- Do not leave the system in a location near heat sources, or in a place subject to direct sunlight, excessive dust, moisture, rain or mechanical shock.

On cleaning

Do not use alcohol, benzine, or thinner to clean the cabinet.

If you have any questions or problems concerning your speaker system, please consult your nearest Sony dealer.

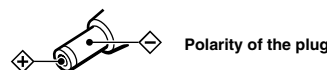
Power Sources Using on house current

(See fig. A)

When the AC power adaptor is connected to the system, internal batteries are automatically disconnected.

Note on the AC power adaptor

Use only the supplied AC power adaptor. Do not use any other AC power adaptor to avoid damaging the speaker.



Battery installation (See fig. B)

Battery replacement

When the batteries are weak, the POWER/CHARGE indicator will start flickering and become faint, or the playback sound will become distorted or unstable. In such a case, replace all the batteries with new ones.

Battery life	(5 mW + 5 mW output, illumination off)
Battery type	Usage time
Sony alkaline battery LR6 (SG)	Approx. 80 hours*
Sony manganese battery R6	Approx. 35 hours*

* Usage time stated above may vary according to the temperature or conditions of use.

* Battery life will be shorter when the illumination is on.

Setting the stand

(See fig. G)

Retract into the stand when carrying the speaker.

Installing/Removing the attachment

(See fig. H)

Installing the attachment according to the Walkman you are using

Use the dedicated attachment for either NW-A1000 or NW-A3000 series. The corresponding model number is marked on the rear of the attachment. Exchange attachments, as shown.

Hooking up the speaker

(See fig. I)

Connect the speaker to the source equipment.

When the system is connected to the monaural jack of a radio, etc., the sound may not come through the right speaker. In such a case, use the optional* plug adaptor PC-234S or PC-236MS.

To connect to a stereo phone-type headphones jack

Use the optional* plug adaptor PC-234S/PC-236MS or connecting cord RK-G136/RK-G138.

* The above optional accessories are not provided in some areas.

Notes

- NW-A1000/A3000 series use the multiple connector (Walkman connection).
- Do not carry the speaker with a Walkman set on the multiple connector, as malfunction may result.

Playing back sound of the connected device

(See fig. J)

Adjust VOLUME to minimum to avoid any sudden loud sounds that may hurt your ears and set the volume of the connected device to a moderate level.

- Disconnect the USB cable used for the speaker and personal computer, or set the POWER switch of the connected personal computer to off.

- When a USB cable is connected between the speaker and a personal computer, no sound will be heard from a Walkman set on the multiple connector, as data transfer mode takes place. Sound from the device connected to INPUT will be heard instead.

- Set the POWER switch to ON.

The POWER/CHARGE indicator lights up.

- Play back the connected device.

Adjust VOLUME accordingly.

- When both a Walkman set on the multiple connector and a device connected to INPUT are used, both sounds can be heard. Control on/off on the connected device itself.

- Set the POWER switch to STANDBY after using.
- The POWER/CHARGE indicator goes off.

Notes

- If connecting the speaker to a device with built-in a radio or tuner, radio reception may not occur or sensitivity may be reduced significantly.
- Release the bass boost function of the connected Walkman, etc., to avoid distortion.
- The USB cable connecting the speaker with personal computer is used for transferring Walkman's data and recharging. When playing back sound of a personal computer using the speaker, connect through the INPUT.
- If the connected device's headphone output has a line switch, better sound will be heard if it is set to on. See the operating instructions of the connected device.

Recharging

A Walkman set on the multiple connector can be recharged by either the AC power adaptor (supplied), or by using a USB cable (supplied with the Walkman) connected to a computer.

Notes

- See the Operation Guide of the Walkman for details on recharging and its related settings.
- When the POWER switch is set to STANDBY, the POWER/CHARGE indicator lights up red while recharging. When the LIGHT switch is set to ON, the bottom of the speaker will be illuminated. After completing recharging, the POWER/CHARGE indicator and the illumination go off.
- Data transfer and recharging cannot be performed simultaneously.
- Playback and recharging can be done at the same time. Recharging time will be longer during playback.
- Charging time varies depending on use of the AC power adaptor or USB cable. For details, see the Operation Guide of the Walkman.

Using the speaker's illumination

Set the LIGHT switch to ON.

While charging the Walkman or when the POWER switch is set to ON, the bottom of the speaker is illuminated. At higher volumes, illumination may flicker. This is not a malfunction, but should it bother you, you may turn off the illumination.

Transferring data between a Walkman and a computer

By connecting a USB cable (supplied with the Walkman) to a computer, you can transfer data to it from the Walkman set on the multiple connector. For details, see the Operation Guide of the Walkman.

Troubleshooting

Should you have a problem with your speaker system, check the following list and take the suggested measures. If the problem persists, consult your nearest Sony dealer.

There is no sound from the speaker system.

- Disconnect the USB cable, or set the POWER switch of the connected personal computer to off.
- Make sure all the connections have been correctly made.
- Make sure the volume on this unit and the connected component have been turned up properly.
- Replace all the batteries with new ones, if batteries are used with this system.

The sound is distorted.

- Make sure all the connections have been correctly made.
- Turn down the volume level on the connected component. Or, if the connected component has a bass boost function, set it to off.
- Rotate VOLUME on this unit to reduce the volume.
- Replace all the batteries with new ones, if batteries are used with this system.

There is hum or noise in the speaker output.

- Make sure all the connections have been correctly made.
- Make sure none of the audio components are positioned too close to the TV set.

The sound has suddenly stopped.

Make sure all the connections have been correctly made.

The brightness of the POWER/CHARGE indicator is unstable.

The brightness of the POWER/CHARGE indicator may become unstable when the volume is turned up. This is not malfunction.

Specifications

Speaker section

Speaker system	39 mm, Full range, magnetically shielded
Enclosure type	Bass reflex
Impedance	4 Ω
Rated input power	2 W
Maximum input power	3 W

Amplifier section

Rated output	2 W + 2 W (10% T.H.D., 1 kHz, 4 Ω) Multiple connector × 1 Stereo minijack × 1
Audio input	Multiple connector × 1 Stereo minijack × 1 Multiple connector 6.5 kΩ (at 1 kHz) Stereo minijack 8.0 kΩ (at 1 kHz)
Data input/output	
Input impedance	

General

Power	Three R6 (size AA) batteries, DC 5.2 V (supplied AC power adaptor)
Dimensions (w/h/d)	Approx. 242 × 137 × 58 mm (9 5/8 × 5 1/2 × 2 1/4 in.)
Mass	Approx. 560 g (1 lb. 4 oz.) including batteries

Supplied accessories

Attachment for NW-A1000 series (1)
Attachment for NW-A3000 series (1)
Carrying pouch (1)
Power cord (1)
AC power adaptor (1)
Operating Instructions (1)

Optional accessories

Connecting cord RK-G136, RK-G138
Plug adaptor PC-234S, PC-236MS

The above optional accessories are not provided in some areas.

Design and specifications are subject to change without notice.

This warranty is valid only in the United States.

SONY®

Tape Cassette Player/Recorder/CD Player/Mini Disc
DAT/Radio/Head Phone/Speaker/MIC/Personals

Portable Audio

LIMITED WARRANTY

Sony Electronics Inc. ("Sony") warrants this Product (including any accessories) against defects in material or workmanship as follows:

1. LABOR: For a period of 90 days from the date of purchase, if this Product is determined to be defective, Sony will repair or replace the Product, at its option, at no charge, or pay the labor charges to any Sony authorized service facility. After the Warranty Period, you must pay for all labor charges.

2. PARTS: In addition, Sony will supply, at no charge, new or rebuilt replacements in exchange for defective parts for a period of one (1) year. After 90 days from the date of purchase, labor for removal and installation is available from Sony authorized service facilities or a Sony Service Center at your expense.

To obtain warranty service, you must take the Product, or deliver the Product freight prepaid, in either its original packaging or packaging affording an equal degree of protection, to any authorized Sony service facility.

This warranty does not cover customer instruction, installation, set up adjustments or signal reception problems.

This warranty does not cover cosmetic damage or damage due to acts of God, accident, misuse, abuse, negligence, commercial use, or modification of, or to any part of the Product, including the antenna. This warranty does not cover damage due to improper operation or maintenance, connection to improper voltage supply, or attempted repair by anyone other than a facility authorized by Sony to service the Product. This warranty does not cover Products sold AS IS or WITH ALL FAULTS, or consumables (such as fuses or batteries). This warranty is valid only in the United States.

Proof of purchase in the form of a bill of sale or receipted invoice which is evidence that the unit is within the Warranty period must be presented to obtain warranty service.

This warranty is invalid if the factory applied serial number has been altered or removed from the Product.

REPAIR OR REPLACEMENT AS PROVIDED UNDER THIS WARRANTY IS THE EXCLUSIVE REMEDY OF THE CONSUMER. SONY SHALL NOT BE LIABLE FOR ANY INCIDENTAL OR CONSEQUENTIAL DAMAGES FOR BREACH OF ANY EXPRESS OR IMPLIED WARRANTY ON THIS PRODUCT. EXCEPT TO THE EXTENT PROHIBITED BY APPLICABLE LAW, ANY IMPLIED WARRANTY OF MERCHANTABILITY OR FITNESS FOR A PARTICULAR PURPOSE ON THIS PRODUCT IS LIMITED IN DURATION TO THE DURATION OF THIS WARRANTY.

Some states do not allow the exclusion or limitation of incidental or consequential damages, or allow limitations on how long an implied warranty lasts, so the above limitations or exclusions may not apply to you. In addition, if you enter into a service contract with the Sony Partnership within 90 days of the date of sale, the limitation on how long an implied warranty lasts does not apply to you. This warranty gives you specific legal rights, and you may have other rights which vary from state to state.

For your convenience, Sony Electronics Inc. has established telephone numbers for frequently asked questions:

To locate the servicer or dealer nearest you, or for service assistance or resolution of a service problem, or for product information or operation, call:

Sony Customer Information Services Center
1-800-222-7669
or visit the Sony Web Site:
www.sony.com

For an accessory or part not available from your authorized dealer, call:

1-800-488-SONY (7669)

