

Operating Instructions
Before operating the unit, please read this manual and "User's Guide/Troubleshooting" (separate volume) thoroughly, and retain them for future reference.



Printed on 100% recycled paper using VOC (Volatile Organic Compound)-free vegetable oil based ink.

Checking the accessories supplied

- Battery charger BC-CSG (1)
- USB, A/V, DC IN cable for multi-use terminal (1)
- Rechargeable battery pack NP-BG1 (1)/Battery case (1)
- Wrist strap (1)
- Stylus (1)
- CD-ROM (Cyber-shot application software) (1)
- Operating instructions: "Read This First" (this manual) (1)
- Operating instructions: "User's Guide/Troubleshooting" (1)

A "Memory Stick Duo" is not supplied. The camera has its own internal memory (26 MB), however, purchase of a "Memory Stick Duo" is recommended for shooting more images.

"Memory Stick Duo": you can use a "Memory Stick Duo" with your camera.

"Memory Stick": you cannot use a "Memory Stick" with your camera.

Other memory cards cannot be used.
For details on "Memory Stick Duo" → "User's Guide/Troubleshooting" (page 117)

Notes

- Charge the supplied NP-BG1 battery pack before using the camera for the first time.
- The LCD screen is manufactured using extremely high-precision technology so over 99.99% of the pixels are operational for effective use. However, there may be some tiny black points and/or bright points (white, red, blue or green in color) that constantly appear on the LCD screen. These points are normal in the manufacturing process and do not affect the recording in any way.
- The camera is a precision instrument. Be careful not to bump the lens or the LCD screen, and not to apply force to it. Attach the strap to prevent the camera from damage by being dropped, etc.
- Designed for use with compatible Sony batteries.

Additional information on this product and answers to frequently asked questions can be found at our Customer Support Website.

1 Prepare the battery pack

1 Insert the battery pack.
Push the back part of the battery pack gently until it clicks into place.

2 Lift out the inlet plug and connect to the wall outlet (wall socket).

CHARGE lamp
Light on: Charging
Light off: Completed (Practical charge)
If you continue charging the battery pack for about one more hour (until it is fully charged), the charge will last slightly longer.

- Connect the battery charger to an easily accessible wall outlet (wall socket) close by.
- Even if the CHARGE lamp is not lit, the battery charger is not disconnected from the AC power source (mains) as long as it is connected to the wall outlet (wall socket). If some trouble occurs while using the battery charger, immediately shut off the power by disconnecting the plug from the wall outlet (wall socket).
- When charging is finished, disconnect the battery charger from the wall outlet (wall socket), and remove the battery pack from the battery charger.
- The time required to fully charge the supplied battery pack from when it is completely discharged at a temperature of 25°C (77°F) is approximately 330 min., and the practical charging time is approximately 270 min. Charging may take longer under certain circumstances or conditions.

3 Insert the charged battery pack.

Open the battery/"Memory Stick Duo" cover.

Facing the battery pack as shown above, insert it while pressing the battery eject lever with the tip of the battery.

Close the battery/"Memory Stick Duo" cover.

2 Turn the camera on/set the clock

1 Select [Camera icon].

2 Press the POWER button.

3 Set the clock by touching the buttons on the screen.

1 Touch the desired date display format, then →. The Clock Set 2/2 screen appears.

2 Touch the item to be set, then set the numeric value with ▲/▼.

3 Touch [OK].

To cancel, touch [Cancel].

3 Insert a "Memory Stick Duo" (not supplied)

Terminal side

Insert the "Memory Stick Duo" all the way in until it clicks.

When there is no "Memory Stick Duo" inserted
The camera records/plays back images using the internal memory (26 MB). → "User's Guide/Troubleshooting" (page 25)

4 Operate the touch panel

1 Select a mode.
Movie: Select [Movie icon].
Still image: Select [Camera icon].
Playback: Select [Play icon].

2 Press [On-screen key] to display the touch panel buttons.

3 Touch the buttons on the screen lightly with your finger.

To turn off the touch panel buttons, press [On-screen key].

Using the AC Adaptor

You can connect the camera to a wall outlet (wall socket) using the AC-LS5K AC Adaptor (not supplied). → "User's Guide/Troubleshooting" (page 17). Refer to the operating instructions supplied with the AC Adaptor.

To check the remaining battery

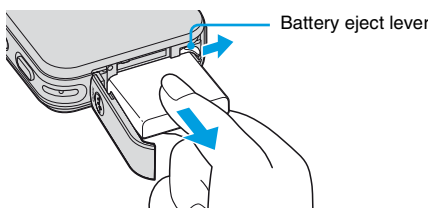
Press POWER button to turn on and check the remaining battery on the LCD screen.

Battery remaining indicator					
Battery remaining guidelines	Sufficient power remaining	Battery half full	Battery low, recording/playback will stop soon.	Change the battery with fully charged one, or charge the battery. (The warning indicator flashes.)	

- It takes about one minute until the correct battery remaining indicator appears.
- The displayed battery remaining indicator may not be correct under certain circumstances.

To remove the battery pack

Open the battery/"Memory Stick Duo" cover and slide the battery eject lever in the direction of the arrow. Grasp the edges of the battery pack to pull the battery pack out. To avoid dropping the battery pack, do not hold the camera with the battery slot facing down when the battery eject lever is out.



To use your camera abroad — Power sources

You can use your camera, the supplied battery charger, and the AC-LS5K AC Adaptor (not supplied) in any country or region where the power supply is within 100 V to 240 V AC, 50/60 Hz.

Do not use an electronic transformer (travel converter), as this may cause a malfunction.

To change the date and time

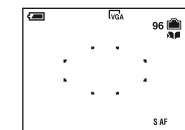
Select [Clock Set] in the [Setup] screen and perform the procedure in step 3 above. → "User's Guide/Troubleshooting" (pages 61 and 73)

On the clock display

- If you selected [D/M/Y] in step 3-1, set the time on a 24-hour cycle.
- Midnight is indicated as 12:00 AM, and noon as 12:00 PM.

When turning on the power

- Unless you set the clock, the Clock Set screen appears each time the camera is turned on.
- The following screen appears when the camera is turned on for the second time or afterwards.



To turn off the power

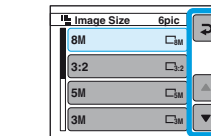
- Press the POWER button again.
- If the camera is running on battery power and you do not operate the camera for about three minutes, the camera turns off automatically to prevent wearing down the battery pack (Auto power-off function).

Changing the language setting

You can change the screen display to show messages in a specified language. To change the language setting, touch [MENU] to display the menu screen. Select [Setup], then select [Language] in [Setup2], and select the desired language. → "User's Guide/Troubleshooting" (page 71)

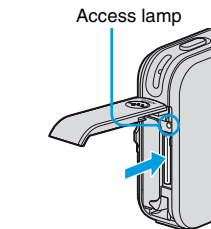
On the touch panel buttons

- When the item you want to set is not on the screen, touch ▲/▼ to change the page.
- You can return to the previous screen by touching ↶.



- To operate the touch panel, press it lightly with your finger or the supplied stylus.
- Do not press the touch panel with any pointed object other than the supplied stylus.
- Do not press against the LCD screen more than necessary.

To remove a "Memory Stick Duo"



Open the battery/"Memory Stick Duo" cover, then push the "Memory Stick Duo" in once.

When the access lamp is lit

Never remove the battery/"Memory Stick Duo" or turn off the power. The data may be corrupted.

5 Select the image size for use

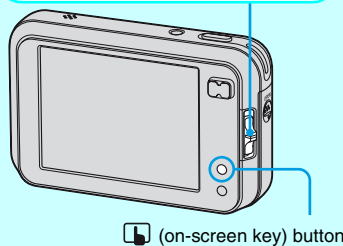
1 Select a mode.

Still image:

Select

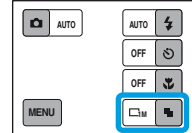
Movie:

Select

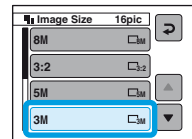


2 Touch (on-screen key) to display the touch panel buttons.

3 Touch (Image Size).



4 Touch the desired image size.

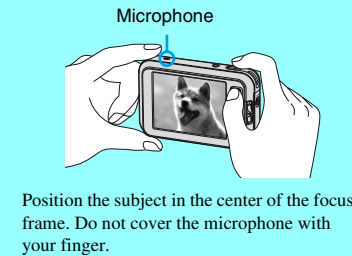
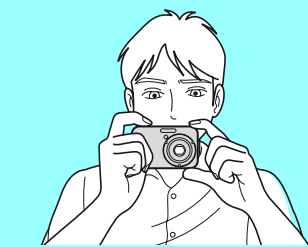


- The screen above is for still images.
- For movies, select [640(Fine)] ("Memory Stick PRO Duo" only), [640(Standard)] or [160].
- The recordable number of still images or the recordable time of movies is indicated at the right side of [Image Size].

5 Touch to complete the setting.

6 Shoot images easily (Auto adjustment mode)

Holding the camera



Position the subject in the center of the focus frame. Do not cover the microphone with your finger.

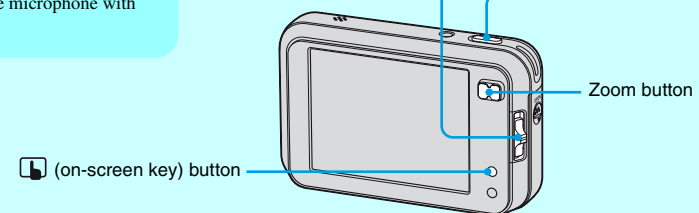
1 Select a mode.

Still image (auto adjustment mode):

Select

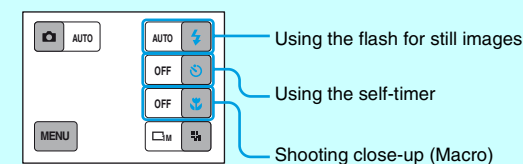
Movie:

Select



Setting Flash mode/Self-timer/Macro recording

Press (on-screen key) to display the touch panel buttons.



- Using the flash for still images
- Using the self-timer
- Shooting close-up (Macro)

2 Shoot with the shutter button.

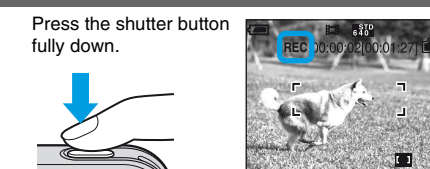
When shooting images during displayed on the screen, those minimized copies of the original images can be saved in the Album. → "User's Guide/Troubleshooting" (page 37)

Still image:

- Press and hold the shutter button halfway down to focus.
- AE/AF lock indicator Flashing indicator → Indicator lit/beeps
- Press the shutter button fully down. The shutter sounds.

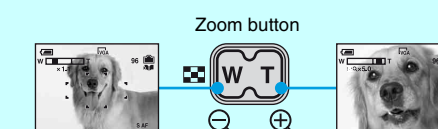


Movie:



To stop recording, press the shutter button fully down again.

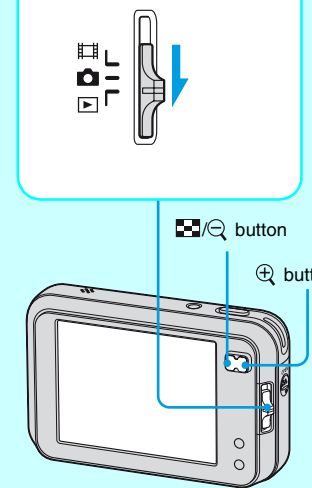
Using the zoom



- When the zoom scale exceeds 3x, the camera uses the Digital Zoom function. For details on the [Digital Zoom] settings and the image quality → "User's Guide/Troubleshooting" (page 62)
- You cannot change the zoom scale while shooting a movie.

7 View/delete images

1 Select .



2 Select an image with .

Still image: the image size is displayed

Movie: is displayed

Touch .

Playback bar

Rewind/Fast forward: (Return to normal playback:)

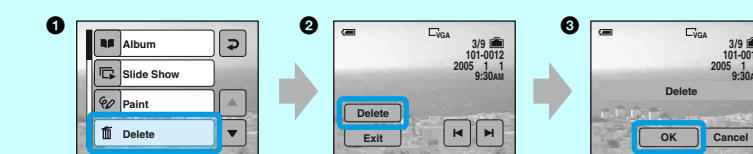
Volume: Touch [MENU] → [Volume] → +/- to adjust → [Exit].

Stop playback:

- Movies with the image size [160] are displayed a size smaller.

To delete images

Display the image you want to delete, then touch [MENU] → [Delete] → [Delete] → [OK].



To cancel the deletion

- Touch [Exit] in or [Cancel] in .
- Even when you delete an image, the minimized image recorded in the Album is still saved.

On still image sizes

For details on the image size → "User's Guide/Troubleshooting" (page 14)

The default settings are marked with .

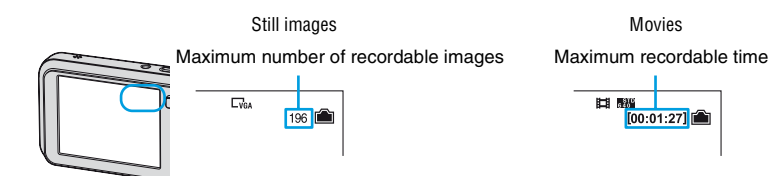
Image size	Guidelines	No. of images	Printing
8M (3264x2448)	For printing in A3 size or high density images in A4 size	Less	Fine
3:2* (3264x2176)			
5M (2592x1944)	For printing in A4 size or high density images in A5 size	↕	↕
3M (2048x1536)			
1M (1280x960)	For printing in postcard size		
VGA(E-Mail) (640x480)	For recording a larger number of images For attaching images to e-mail or creating web pages	More	Rough
16:9(HDTV)** (1920x1080)	For viewing images on a wide screen TV, HDTV and HD-ready TV***		

* Images are recorded in the same 3:2 aspect ratio as photograph printing paper or postcards, etc.
 ** Both edges of the image may be cut off when printing → "User's Guide/Troubleshooting" (page 110)
 *** You can view images in higher quality if the TV has the "Memory Stick" slot or is connected via USB.

On the recordable number of still images and recordable time of movies

Recordable number of still images and recordable time of movies vary depending on the image size selected.

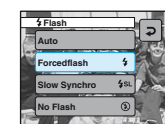
For details on recordable number or time → "User's Guide/Troubleshooting" (page 24)



- The number of recordable images and time can differ according to shooting conditions.

Selecting a flash mode for still images

Touch on the screen. Touch the desired item, then .



Auto	Strobes if it is dark or against light (default setting)
Forcedflash (⚡)	Always strobes.
Slow Synchro (Forced flash) (⚡SL)	The shutter speed is slow in a dark place to clearly shoot the background that is out of flash light.
No Flash (⊘)	Does not strobe.

- Shooting distance (when [ISO] is set to [Auto])
 W side: Approx. 0.20 to 5.0 m (7 7/8 inches to 16 feet 4 7/8 inches)
 T side: Approx. 0.34 to 2.6 m (1 feet 1 1/2 inches to 8 feet 6 3/8 inches)
- The flash strobes twice. The first time is to adjust the light quantity.

Using the self-timer

Touch on the screen. Touch [On], then .

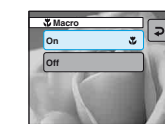
Press the shutter button, the self-timer lamp flashes, and a beep sounds until the shutter operates (approximately 10 seconds later).

To suspend the self-timer shooting, press (on-screen key).



Shooting close-up (Macro)

Touch on the screen. Touch [On], then .



- Setting the zoom all the way to the W side is recommended.
- The in-focus range becomes narrow, and the complete subject may not entirely be in focus.
- The Auto Focus speed drops.

Shortest shooting distance from the lens surface

Setting all the way to the W side: Approx. 6 cm (2 3/8 inches)
 Setting all the way to the T side: Approx. 34 cm (13 3/8 inches)

If you shoot a still image of a subject that is difficult to focus on

- If the subject is closer than approx. 50 cm (19 3/4 inches), use the Macro mode (above).
- When the camera cannot focus on the subject automatically, the AE/AF lock indicator changes to flashing slowly and the beep does not sound. Recompose the shot and focus again.

Subjects difficult to focus on are:

- Distant from the camera and dark
- Reflective light or with a lustrous finish
- The contrast between the subject and its background is poor.
- Flashing
- Seen through glass
- Backlit
- Moving fast

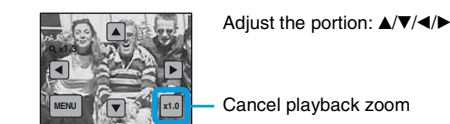
To identify items on the screen

→ "User's Guide/Troubleshooting" (page 18)

To view an enlarged image (playback zoom)

Press while displaying a still image.

To undo the zoom, press .



- To store enlarged images: [Trimming] → "User's Guide/Troubleshooting" (page 60)

Viewing an index screen

Press (Index). Touch the image you want to view on the single-image screen.

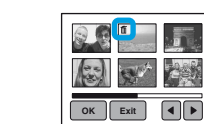
To display the previous/next screen, touch .



If you press again, the 12-image index screen appears.

To delete images in index mode

- 1 While an index screen is displayed, touch [MENU] → [Delete] → [Select].
- 2 Touch the image you want to delete to display the (Delete) indicator.



To cancel a selection

Touch the image you want to cancel deleting to turn off the indicator on the image.

- 3 Touch [OK] → [OK].

- To delete all the images in the folder, touch [All in This Folder] in step 1 instead of [Select].