

# *Plasma TV*

---

## Operating Instructions

- Before operating the unit, please read this manual thoroughly and retain it for future reference.

**WEGA**  
*KE-MV42A1*

# Safety Information

## For Safety

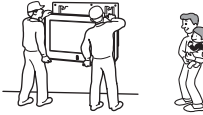
### AC power cord

Unplug the AC power cord when moving the Plasma TV. Do not move the Plasma TV with the AC power cord plugged in. It may damage the AC power cord and result in fire or electric shock. If the Plasma TV has been dropped or damaged, have it checked immediately by qualified service personnel.



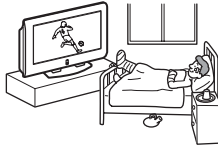
### Installation

Installation of the Plasma TV on the wall should be carried out by qualified servicemen. Improper installation may render the Plasma TV unsafe.



### Medical institution

Do not place this Plasma TV in a place where medical equipment is in use. It may cause malfunction of medical instruments.



### Carrying

Carrying the Plasma TV requires two or more people. If you carry the Plasma TV in a manner other than that specified, it may drop and a serious injury may be caused. Be sure two or more people carry the Plasma TV. When transporting, do not subject the Plasma TV to shocks or excessive vibration. The Plasma TV may fall and be damaged or cause serious injury.



## Installation and moving

### Ventilation

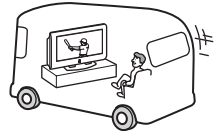
Never cover the ventilation holes in the cabinet. It may cause overheating and result in fire. Unless proper ventilation is provided, the Plasma TV may gather dust and get dirty. For proper ventilation, observe the following:

- Do not install the Plasma TV turned backward or sideways.
- Do not install the Plasma TV turned over or upside down.
- Do not install the Plasma TV on a shelf or in a closet.
- Do not place the Plasma TV on a rug or bed.
- Do not cover the Plasma TV with cloth, such as curtains, or items such as newspapers, etc.



### Vehicle and ceiling

Do not install this Plasma TV in a vehicle or hang it from the ceiling. Bumping of the vehicle may cause the Plasma TV to fall down and cause injury.



### Water and moisture

Do not use this Plasma TV near water - for example, near a bathtub or shower room. Also do not expose to rain. It may result in fire or electric shock.

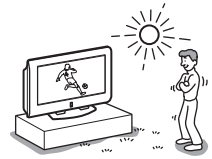
### Optional accessories

When installing the Plasma TV, use the supplied stand or wall-mount bracket (not supplied). If not, the Plasma TV may fall and cause serious injury.



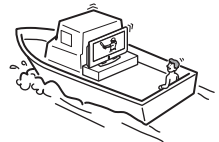
### Outdoor use

Do not install this Plasma TV outdoors. If the Plasma TV is exposed to rain, it may result in fire or electric shock. If the Plasma TV is exposed to direct sunlight, the Plasma TV may heat up and it may damage the Plasma TV.



### Ship and vessel

Do not install this Plasma TV in a ship or vessel. If the Plasma TV is exposed to seawater, it may cause fire or damage the Plasma TV.



### Cord arrangement

Arrange the power cords or connecting cords in a safe place to avoid tripping on them.

### Fall

Place the Plasma TV on a secure, stable stand. Do not hang anything on the Plasma TV. The Plasma TV may fall from the stand or wall-mount bracket (not supplied), causing damage or serious injury.



### Recommended place for the Plasma TV

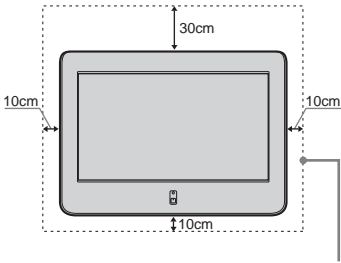
Place the Plasma TV on a stable, level surface. Otherwise, it may fall and cause injury.



## Ventilation

Leave space around the Plasma TV. Otherwise, adequate air-circulation may be blocked causing overheating and cause fire or damage the Plasma TV.

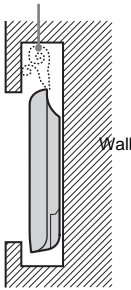
### When installing the Plasma TV on the wall



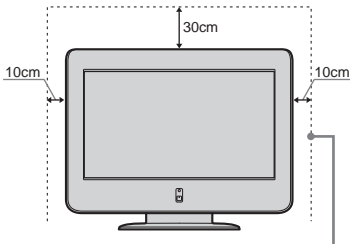
Leave this space at least.

Never install the Plasma TV as follows:

Air circulation is blocked.



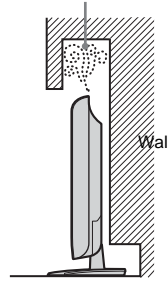
### When installing the Plasma TV using a stand



Leave this space at least.

Never install the Plasma TV as follows:

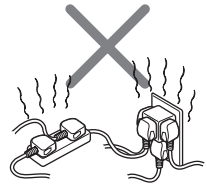
Air circulation is blocked.



## Power Sources

### Overloading

This Plasma TV is designed to operate on a 110-240V AC supply for the Plasma TV. Take care not to connect too many appliances to the same AC power socket as this could result in fire or electric shock.



### AC power outlet

Do not use a poor fitting AC power socket. Insert the plug fully into the AC power outlet. If it is loose, it may cause arcing and result in fire. Contact your electrician to have the AC power socket changed. When you disconnect the AC power cord, disconnect it from the AC outlet first.



### Moisture

Do not touch the AC power cord with a wet hand. If you plug/unplug the AC power cord with a wet hand, it may cause electric shock.



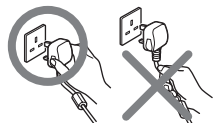
### Lightning storms

For your own safety, do not touch any part of the Plasma TV, AC power cord or antenna lead during lightning storms.



### AC power cord protection

Pull out the AC power cord by the plug. Do not pull on the AC power cord itself.



## Wiring

Unplug the AC power cord when wiring cables. Be sure to unplug the AC power cord for your safety, when hooking up.

## Cleaning

Clean the AC power plug regularly. If the plug is covered with dust and it picks up moisture, its insulation may deteriorate and result in fire. Unplug the AC power plug and clean it regularly.



## Grounding

To avoid electric shock, be sure to connect the supplied AC power cord to a grounded power outlet. If the plug fails to fit, contact your electrician to have the outlet changed.

## Use

### Damage requiring service

If the surface of the Plasma TV cracks, do not touch it until you unplug the AC power cord. Otherwise electric shock may result.

### Servicing

Do not open the cabinet and the rear cover of the Plasma TV. Refer to qualified service personnel only.



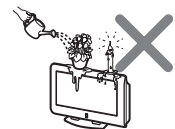
### Ventilation holes

Do not insert anything in the ventilation holes. If metal or something flammable enters, it may result in fire or electric shock.



### Moisture and flammable

- Do not let this Plasma TV get wet. Never spill liquid of any kind on the set. If any liquid or solid object does fall through, do not operate the Plasma TV. It may result in electric shock or damage to the Plasma TV. Have it checked immediately by qualified personnel.
- Do not place any objects on the Plasma TV. The Plasma TV shall not be exposed to dripping or splashing and that no objects filled with liquids, such as vases, shall be placed on the Plasma TV.
- To prevent fire, keep inflammable objects or naked lights (e.g. candles) away from the Plasma TV.



## Additional Safety Information

### Electric shock

Do not touch the Plasma TV with a wet hand. Doing so may cause electric shock or damage the Plasma TV.

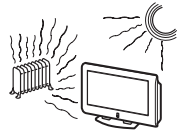
### Protruding location

Do not install the Plasma TV in protruding locations. If you install the unit in the following locations, injury may result.

- Do not install the Plasma TV in a location where the Plasma TV protrudes, such as pillars.
- Do not install the Plasma TV in a location where your face may bump.

### Placement

Never place the Plasma TV in hot, humid or excessively dusty places. Do not install the Plasma TV where it may be exposed to mechanical vibrations. Do not use the Plasma TV where insects may enter.



### Oils

Do not install this Plasma TV in restaurants that use oil. Dust absorbing oil may enter into the Plasma TV and damage the Plasma TV.

### Accessories

Secure the Plasma TV from falling down.

If the Plasma TV is not secured properly, it may fall and cause injury. Take measures against it using the supplied stand or a wall-mount bracket (not supplied).

### Broken pieces

Do not throw anything at the Plasma TV. The screen glass may explode by the impact and cause serious injury.



### Corrosion

If you use this Plasma TV near the seashore, salt may corrode metal parts of the Plasma TV and cause internal damage or fire. It may also shorten the life of the Plasma TV. If the Plasma TV will be subjected to none of these conditions, steps should be taken to reduce the humidity and temperature of the area where the Plasma TV is located.

### Cleaning

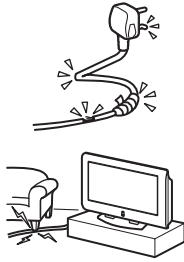
Unplug the AC power cord when cleaning this Plasma TV. If not, it may result in electric shock.

## AC power cord

If you damage the AC power cord, it may result in fire or electric shock.

- Do not pinch, bend, or twist the cable excessively. The core lines may be bared and cut, and cause short-circuit, resulting in fire or electric shock.
- Do not convert or damage the AC power cord.
- Do not put anything heavy on the AC power cord. Do not pull the AC power cord.
- Keep the AC power cord away from heat sources.
- Be sure to grasp the plug when disconnecting the AC power cord.

If the AC power cord is damaged, stop using it and ask your dealer or Sony service center to exchange it.



## Not in use

For environmental and safety reasons, it is recommended that the Plasma TV is not left in standby mode when not in use. Disconnect from the AC power outlet.

## Cable wiring

Take care not to catch your feet on the cables. It may damage the Plasma TV.

## Installation

Do not install optional components too close to the Plasma TV. Keep optional components at least 30 cm away from the Plasma TV. If a VCR is installed in front or beside the Plasma TV, the picture may distort.

## Heat

Do not touch the surface of the Plasma TV. It remains hot, even for some time after the Plasma TV is turned off.

# Precautions

## On viewing the Plasma TV comfortably

- To view the Plasma TV comfortably, the recommended viewing position is from four to seven times of the screen's vertical length away from the Plasma TV.
- View the Plasma TV in a moderate light room, as viewing the Plasma TV in poor light taxes your eyes. And watching the screen continuously long times taxes your eyes, too.

## On installing the Plasma TV

- Use the specified wall-mount bracket or stands.
- Do not install the Plasma TV in places subject to extreme temperature, for example in direct sunlight, or near a radiator, or heating vent. If the Plasma TV is exposed to extreme temperature, the Plasma TV may heat up and it may cause deformations of the casing or malfunctions.
- Do not install the Plasma TV in a place exposed to direct air conditioning. If the Plasma TV is installed in such a location, moisture may condense on the glass or PDP panel inside the Plasma TV. It may cause a malfunction.
- After transporting the Plasma TV directly from a cold to a warm location, or if the room temperature has changed suddenly, pictures may be blurred or show poor color over portions of the picture. This is because moisture has condensed on the glass or PDP panel inside the Plasma TV. Let the moisture evaporate before using the Plasma TV.
- To obtain a clear picture, do not expose the screen to direct illumination or direct sunlight. If possible, use spot lighting direct down from the ceiling.

## On adjusting volume

- Adjust the volume so as not to trouble neighbors. Sound carries very easily at night time. Therefore, closing the windows or using headphones is suggested.
- When using headphones, adjust the volume so as to avoid excessive levels, as hearing damage may result.

## On image retention

- If the following images are displayed for an extended period time, image retention (afterimage) in areas of the screen may result due to the characteristics of the Plasma Display Panel.
  - Black bars at the top and bottom that appear with a wide video source (Letterbox picture).
  - Black bars to the left and right that appear with a 4:3 video source (conventional TV broadcasts).
  - Video game sources
  - PC images
  - DVD on-screen menu displays
  - On-screen menus, channel numbers, etc., of connected equipment such as Set top box, Cable modem, VCR, etc.The risk of this is higher if the set is in "Dynamic" mode or has a high contrast setting. This image cannot be removed once burnt onto the screen. To avoid the risk of occurrence do not leave the TV set operating on such a picture, or program for a long time, use the "Screen Saver" function or lower the contrast setting. Repeated extended daily usage of the same image, or program can also result in this occurrence. **IMAGE RETENTION IS NOT COVERED BY THE SONY WARRANTY.**
- To reduce image retention, this Plasma TV has the "Screen Saver" function. The default setting of the "Orbit" function in "Screen Saver" is "On".

### **On the PDP (Plasma Display Panel)**

Please note that the PDP screen is made with high-precision technology. However, black points or bright points of light (red, blue, or green) may appear constantly on the PDP screen, and irregular colored stripes or brightness may appear on the PDP screen. This is not a malfunction.

### **On handling the remote control**

- Handle the remote control with care. Do not drop or step on it, or spill liquid of any kind.
- Do not place the remote control in a location near heat source, or in a place subject to direct sunlight, or in a damp room.

### **On handling and cleaning the screen surface of the Plasma TV**

The screen of this Plasma TV has an anti-reflection screen coating. To avoid screen degradation, follow the points mentioned below. Do not push on or scratch with hard objects, or throw anything at the screen. The screen may be damaged.

- Be sure to unplug the AC power cord connected to the Plasma TV from the AC power outlet before cleaning.
- Do not touch the display panel after operating continuously for a long period as the display panel becomes hot.
- The screen of this Plasma TV has an anti-reflection screen coating. We recommend not to touch much of the screen surface.
- Clean the screen with the supplied cleaning cloth or a soft cloth lightly moistened with a mild detergent solution.
- Never use any type of abrasive pad, scouring powder, or solvent, such as alcohol or benzine. This type of contact may result in damage to the screen surface.

### **On cleaning the cabinet**

- Be sure to unplug the AC power cord connected to the Plasma TV from the AC power outlet before cleaning.
- Clean the cabinet with the supplied cleaning cloth or a soft cloth lightly moistened with a mild detergent solution.
- Note that material deterioration or screen coating degradation may occur if the Plasma TV is exposed to a volatile solvent, such as alcohol, thinner, benzine or insecticide, or if prolonged contact is maintained with rubber or vinyl materials.

### **Disposal of Old Electrical & Electronic Equipment (Applicable in the European Union and other European countries with separate collection systems)**



This symbol is on the remote control.



# Table of Contents

## Safety Information

### Precautions

---

### Using Your New TV

|  |    |
|--|----|
| Getting Started .....                                      | 8  |
| Step 1: Install the TV .....                               | 8  |
| Step 2: Connect an Antenna and a VCR .....                 | 9  |
| Step 3: Insert the Batteries into the Remote Control ..... | 11 |
| Step 4: Set Up Your TV Automatically .....                 | 11 |
| Connecting Optional Components .....                       | 13 |
| Watching the TV .....                                      | 17 |

---

### Advanced Operations

|  |    |
|--|----|
| Sleep Timer Function .....   | 19 |
| Picture Off Function .....   | 19 |
| Picture Freeze Function .....  | 20 |
| Teletext .....   | 20 |
| Setting Up the Remote Control to Work with Other Connected Equipment ..... | 21 |

---

### Adjusting Your Setup (MENU)

|                                   |    |
|-----------------------------------|----|
| Introducing the Menu System ..... | 24 |
| Picture .....                     | 27 |
| Sound .....                       | 29 |
| Wide Screen .....                 | 31 |
| Features .....                    | 34 |
| Set Up .....                      | 35 |

---

### Additional Information

|                                      |            |
|--------------------------------------|------------|
| Troubleshooting .....                | 39         |
| Self-diagnosis Function .....        | 43         |
| Identifying Parts and Controls ..... | 44         |
| Index .....                          | 49         |
| Specifications .....                 | Back cover |

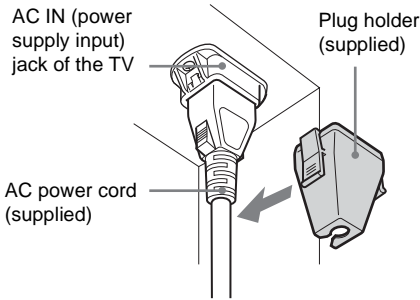
## Getting Started

### Step 1: Install the TV

#### Securing the AC plug

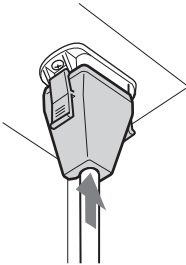
You must secure the AC plug to the TV's AC IN jack.

- 1 Attach the AC plug holder (supplied) to the AC power cord.



- 2 Clip on the AC IN jack until you hear clicking.

To unplug the AC power cord, pull down the AC plug holder by pushing in both sides of the holder, then pull out the plug.



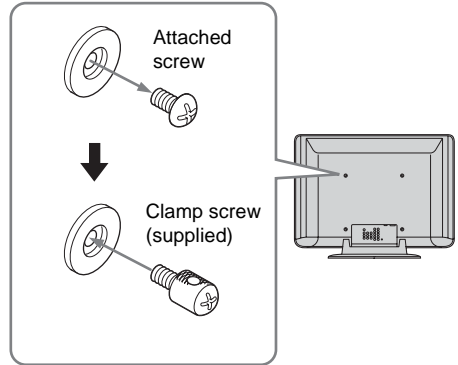
#### Note

- When you disconnect the AC power cord, disconnect it from the AC outlet first.

#### Preventing the TV from falling down

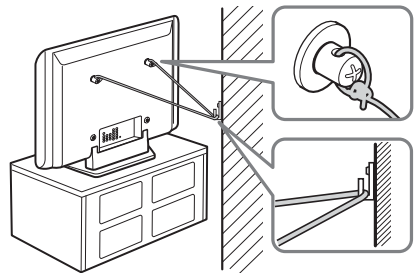
After antenna and other equipment connections are completed, be sure to attach the supplied clamp screws to the rear of the TV, and thread a sturdy cord or chain through it and attach it to a wall or pillar.

- 1 Remove one of the two screws on the rear of the TV, then install the supplied clamp screw in the screw hole.



- 2 Repeat step 1 to install the other clamp screw.

- 3 Attach a sturdy cord or chain securely to each clamp screw, and attach the cord or chain to a wall or pillar.





## Step 2: Connect an Antenna and a VCR

### For optimum performance

To connect the TV to the antenna or the VCR, use an antenna cable (supplied).

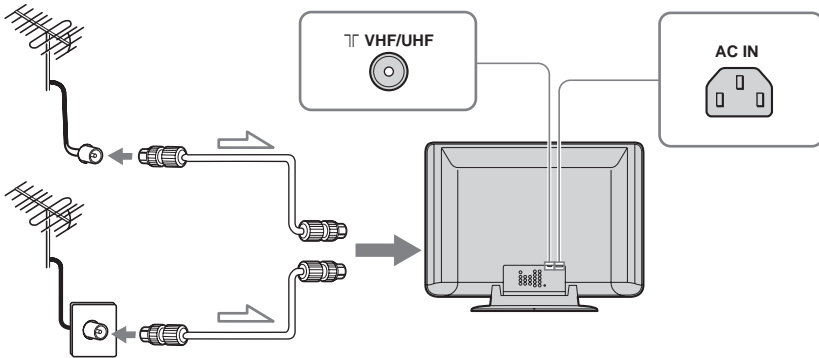
Note that one end of the cable has a male plug fitted while the other end is fitted with a female socket.

Connect the male plug to the  $\Upsilon$  VHF/UHF (antenna) terminal of the TV.

### Note

- Do not connect the power cord until all other connections are complete; otherwise, a minimal current leakage through the antenna and/or other terminals to the ground could occur.

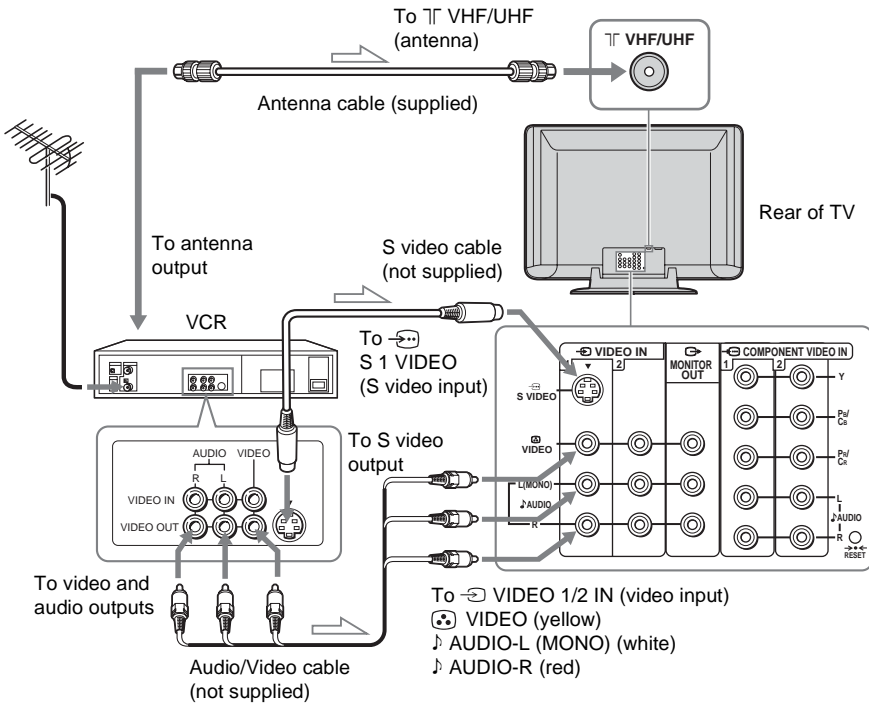
### Connecting an antenna



Connect the supplied antenna cable.

## Connecting a VCR with an antenna

For more details regarding VCR connection, refer to “Connecting Optional Components” on page 13.

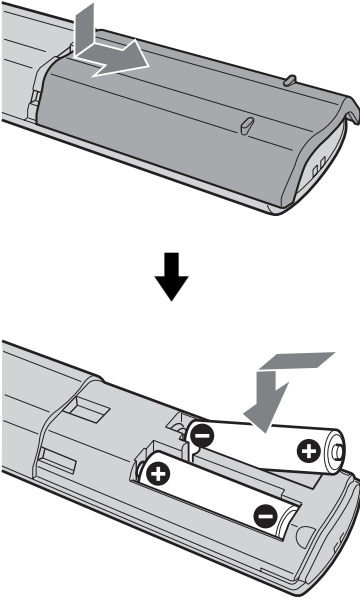


⇒: Signal flow

### Notes

- If you connect a monaural VCR, connect the yellow plug to VIDEO (the yellow jack) and the black plug to AUDIO-L (MONO) (the white jack).
- If you connect a VCR to the VHF/UHF (antenna) terminal, preset the signal output from the VCR to the program number 0 on the TV.
- If the S video cable is connected to this TV and the VCR, the S video signal is automatically selected.

## Step 3: Insert the Batteries into the Remote Control



### Notes

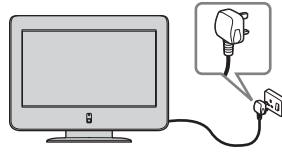
- Make sure you insert the supplied batteries observing the correct polarity.
- Always remember to dispose of used batteries in an environmentally friendly way.
- Do not use different types of batteries together or mix old and new batteries.


## Step 4: Set Up Your TV Automatically

The first time you turn on your TV, a sequence of menu screens appears on the TV enabling you to: 1) choose the language of the menu screen, and 2) search and store all available channels (TV Broadcast).

However, if you need to change any of these settings at a later date, you can do so by selecting the appropriate option in the “Set Up” menu (see page 35).

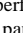
- 1 Connect the TV to the AC outlet (110–240 V AC, 50/60 Hz).

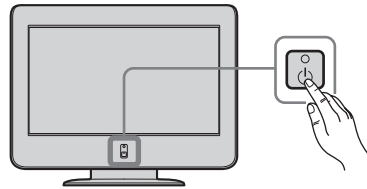


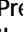

- 2 Press the  (Power) switch on the TV to switch it on.

The first time you switch on the TV, the **Language** menu appears automatically on the screen (Auto Startup).

### Note

- To perform Auto Startup later, press  on the rear panel of the TV.



- 3 Press  /  on the remote control to select the language, then press OK to confirm your selection.

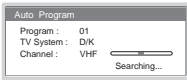
From now on, all the menus will appear in the selected language.



- 
- 4** The Auto Program menu appears automatically on the screen.  
Press **OK** to select **Yes**.



- 
- 5** The TV starts searching and storing all available broadcast channels.




### Notes

- This procedure could take some minutes. Please be patient and do not press any buttons, otherwise the auto programming will not be completed properly.
  - If no channels are found during the auto programming process, a new menu appears automatically on the screen asking you to connect the antenna. Please connect the antenna (see page 9) and press **OK**. The auto programming process will start again.
-

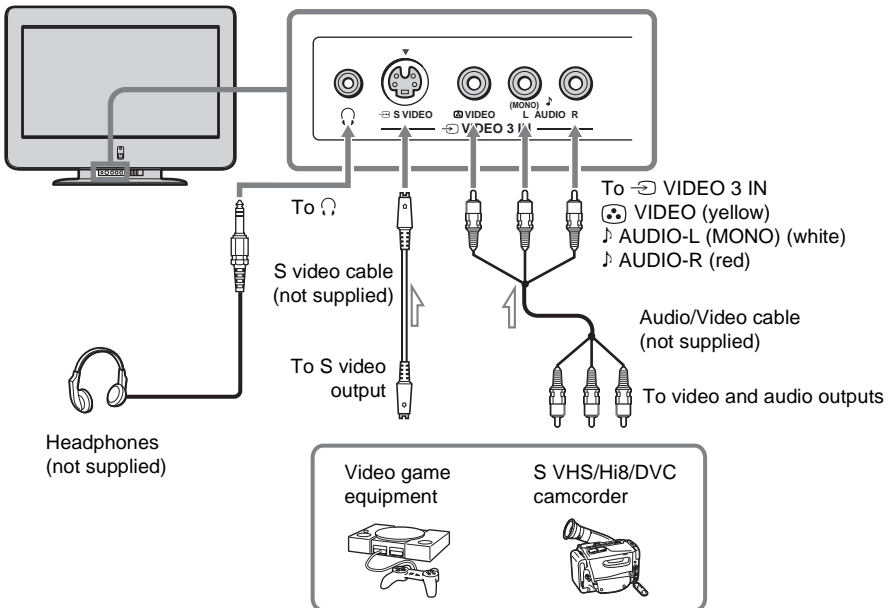
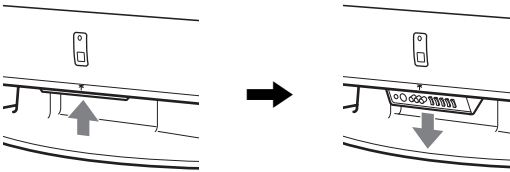
# Connecting Optional Components

Using the following instructions, you can connect a wide range of optional equipment to your TV.  
(Connecting cables are not supplied.)

## Connecting to the front of the TV

To open the drop-down panel of your TV, push up the panel door just under the  mark until you hear a click, then the panel door will open.

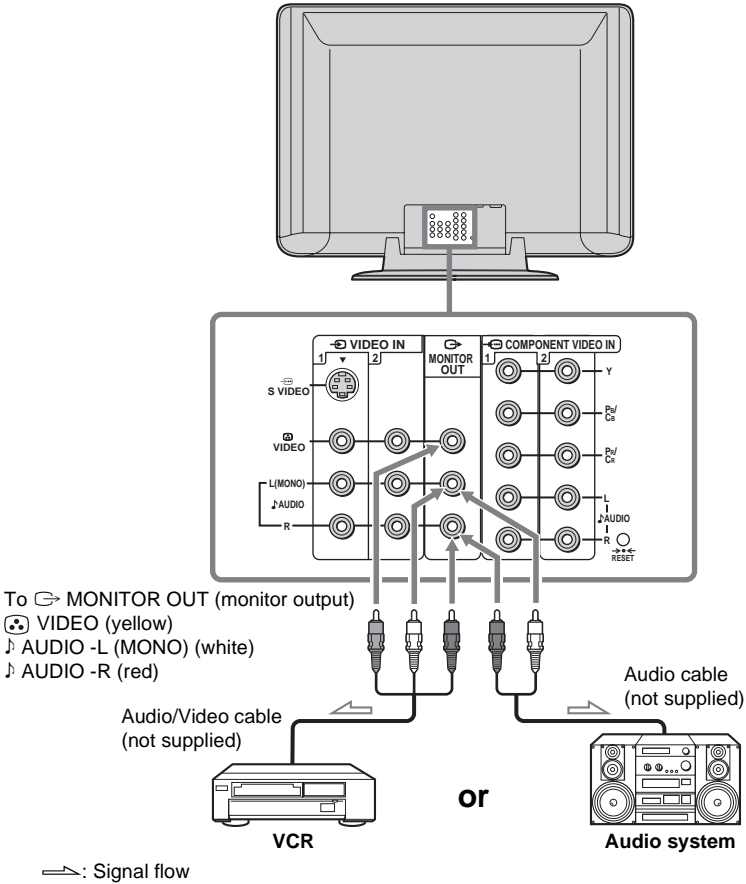
### TV Front Panel



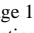
### Notes

- You can also connect video equipment to the VIDEO 1 or 2 IN (video input) jacks or COMPONENT VIDEO 1 or 2 IN jacks at the rear of your TV.
- If the signals are input to both S VIDEO (S video input) and VIDEO (video input), the S video signal is automatically selected.

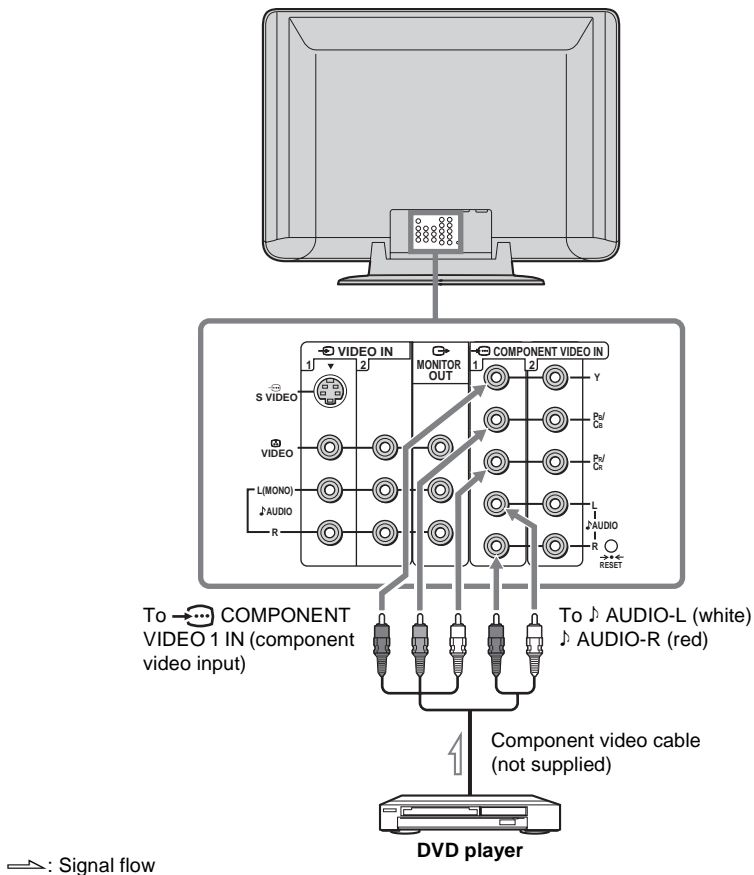
## Connecting audio/video equipment using the MONITOR OUT jacks



### Note

- If you select “HD/DVD 1” or “HD/DVD 2” on your TV screen (see page 18), sound will be heard but no picture will be output from  MONITOR OUT. This does not indicate a malfunction.

## Connecting a DVD player



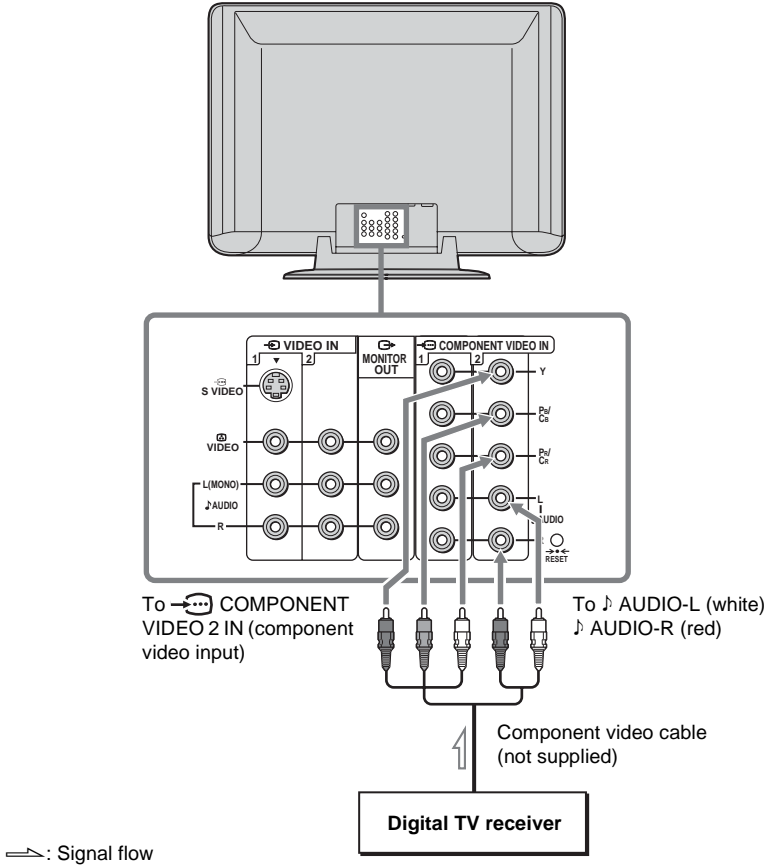
### If the DVD player has the component video output jacks

Connect the component video cable and audio cable to the COMPONENT VIDEO 1 or 2 IN jacks. You do not need to connect the video cable.

### If the DVD player does not have the component video output jacks

Connect the video cable and audio cable to the VIDEO 1 or 2 IN jacks.

# Connecting a Digital TV receiver



## Tip

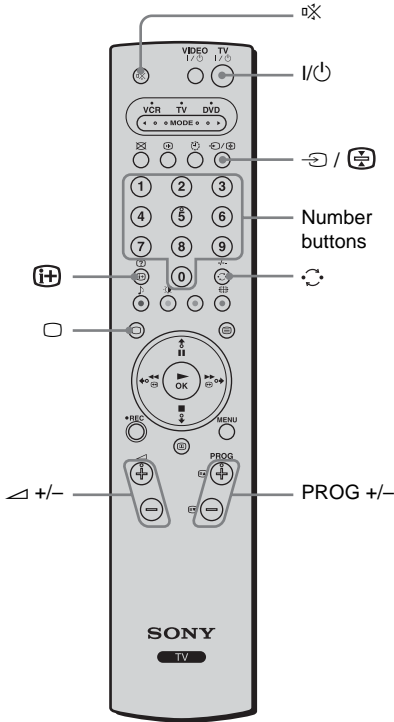
- The TV accepts the following signal formats:

| Total scanning line | Effective scanning line | fV (Hz) |
|---------------------|-------------------------|---------|
| 1125i               | 1080i                   | 50 / 60 |
| 750p                | 720p                    | 50 / 60 |
| 625p                | 576p                    | 50      |
| 625i                | 576i                    | 50      |
| 525p                | 480p                    | 60      |
| 525i                | 480i                    | 60      |





# Watching the TV

This section explains various functions and operations used while watching the TV. Most operations can be done using the remote control.



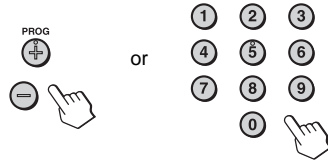
## 1 Press to turn on the TV.

When the TV is in standby mode (the  (Power/Standby) indicator on the TV is lit in red), press  on the remote control.



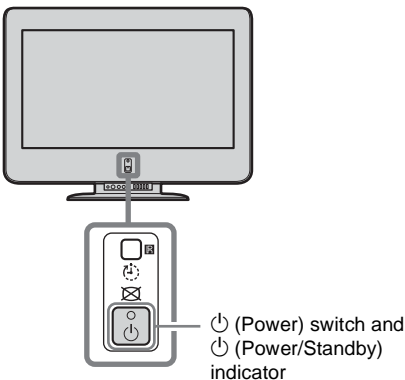
## 2 Press PROG +/- or the number buttons to select the TV channel.

For double digit numbers, enter the second digit within 2.5 seconds.



### Note

- When you turn on the TV, either the program number or video mode is displayed for approximately 10 seconds.



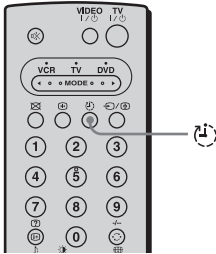
## Additional tasks

| To   | Press  |
|--|--|
| Turn off temporarily   | 1/.<br>The  indicator on the TV lights up in red.  |
| Turn off completely  | on the TV.   |
| Adjust the volume  | +/-.   |
| Mute the sound   | .  |
| Select the channel directly  | The number buttons.<br>The TV turns on automatically.  |
| Watch the video input (VCR, camcorder, etc.) or the component input (DVD, digital TV receiver, etc.) | /  to select "Video 1", "Video 2", "Video 3", "HD/DVD 1" or "HD/DVD 2".<br>To return to the TV screen, press  (or  on the TV). |
| When selecting a TV channel, skip to the last channel being watched for at least 5 seconds.          | .  |
| Display the on-screen information*   | .  |


\* Some picture/sound settings, and either the program number or video mode is displayed. The on-screen display for the picture/sound settings disappears after about five seconds.


## Sleep Timer Function

The Sleep Timer function allows you to set the TV to switch itself automatically to the standby mode after a specified time period. You can select the time period from among 15 minutes, 30 minutes, 45 minutes, 60 minutes, 75 minutes and 90 minutes.




### To set the Sleep Timer function



Press  on the remote control repeatedly until the desired time period (“15 M,” “30 M,” “45 M,” “60 M,” “75 M,” or “90 M”) appears on the screen.

When the Sleep Timer function is on, the  (Sleep) indicator on the TV lights up in red.

### To cancel the Sleep Timer function

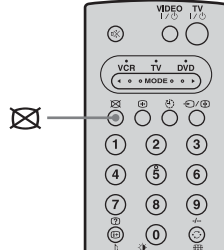
Press  repeatedly until “Off” appears on the screen.

#### Notes



- If you switch off the TV and switch it on again, the Sleep Timer function is reset to “Off.”
- The message “TV will turn off soon.” appears on the screen one minute before the TV switches to the standby mode. Note that this message will not appear when the TV is in the Teletext mode.
- If you press  /  on the remote control, the remaining time in minutes before the TV switches to the standby mode is displayed on the screen.

## Picture Off Function

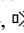
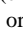
The Picture Off function allows you to listen to the sound from TV or DVDs with the picture on TV screen switched off.



### To turn off the picture

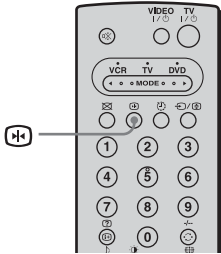
Press  on the remote control. The picture is switched off and the sound remains unchanged. When the Picture Off function is on, the  (picture off) indicator on the TV lights up in blue.

### To cancel the Picture Off function

Press any button (except the VIDEO I/⏻, MODE, REC,  or  buttons) on the remote control.

# Picture Freeze Function

The Picture Freeze function allows you to temporarily freeze and review the picture on the screen. This is useful to check and make a note of information displayed on the screen, such as a mail address or a recipe.



## To use the Picture Freeze function

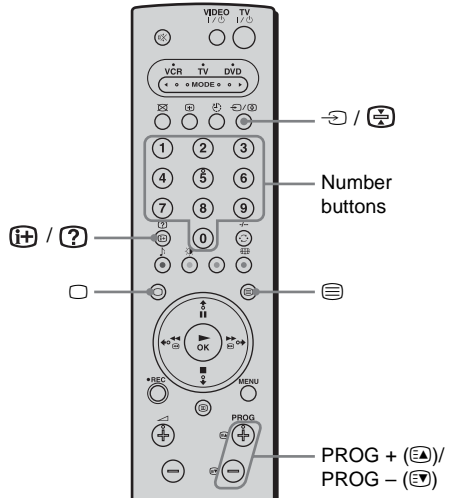
When the picture you want to freeze appears on the screen, press **Picture Freeze** on the remote control. Press **Picture Freeze** again to cancel the Picture Freeze function and return to the normal TV picture.

### Notes

- If you change the input source or the channel, the Picture Freeze function is cancelled.
- When the Picture Freeze function is on, the picture remains still on the screen but the sound continues to play.
- When the Picture Freeze function is on, the **MENU**, **Wide mode**, **Picture mode**, **Teletext**, and **NexTVView** buttons do not work.
- The Picture Freeze function is cancelled after 5 minutes to prevent image retention.
- The Picture Freeze function is cancelled when **Picture off** button is pressed during Picture Freeze.

# Teletext

Teletext is an information service transmitted by most TV stations. The index page of the Teletext service (usually page 100) gives you information on how to use the service. To operate Teletext, use the remote control buttons as indicated below.



### Note

- Make sure you use a channel (TV Broadcast) with a strong signal, otherwise Teletext errors may occur.

## To switch on Teletext

After selecting the TV channel which carries the Teletext service you want to view, press **Teletext**.

| P166 SECTEXT 166 FR1 MAR 03:59:09 |     |           |        |          |  |
|-----------------------------------|-----|-----------|--------|----------|--|
| TRAVEL                            |     |           |        |          |  |
| From Singapore                    | Day | Dep/Arr   | Flight | Aircraft |  |
| To PARIS                          | 1,6 | 2300/0530 | SG338  | 747      |  |
|                                   | 2   | 2100/1220 | PA115  | A320     |  |
|                                   | 3   | 2115/1530 | SG205  | 747      |  |
| To OSAKA                          | 2,5 | 0600/1715 | SG9    | 747      |  |
|                                   | 4,6 | 0930/2015 | CX252  | L10      |  |
| To ROMA                           | 2,7 | 2130/0745 | SG24   | 747      |  |
|                                   | 4   | 2030/0615 | AZ607  | 747      |  |
| To SYDNEY                         | 1   | 2210/0610 | SG21A  | 747      |  |
|                                   | 2   | 2100/0930 | SG21A  | 747      |  |

Each time you press **Teletext**, the screen changes cyclically as follows: Teletext mode → Teletext Superimpose mode → TV mode → Teletext mode → (repeat).

**To select a Teletext page**

Input three digits for the page number, using the number buttons.

- If you make a mistake, retype the correct page number.
- If the counter on the screen continues searching, it is because this page is not available. In this case, input another page number.

**To access the next or preceding page**

Press PROG + (⏪) or PROG - (⏩).

**To superimpose Teletext on to the TV**

While you are viewing Teletext, press (≡). Press it again to cancel the Teletext mode.

**To freeze a Teletext page**

Some Teletext pages have sub-pages which follow on automatically. To stop them, press (⏮) / (⏭). Press it again to cancel the freeze.

**To reveal concealed information (e.g. answers to a quiz)**

Press (⏮) / (?). Press it again to conceal the information.

**To select a sub page**

A Teletext page may consist of several sub pages. In this case, the page number that appears on the upper left corner will change from white to green and one or more arrows will appear next to the page number. Repeatedly press ◀ or ▶ on the remote control to watch the desired page.

**To switch off Teletext**

Press (⏻).

**Fastext**

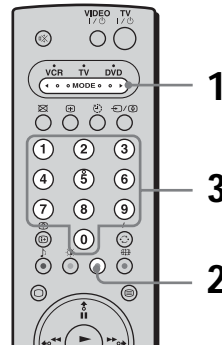
The Fastext service lets you access pages with one push of a button.

While you are in the Teletext mode and Fastext is broadcast, a color coded menu appears at the bottom of the Teletext page. Press the color button (red, green, yellow or blue) to access the corresponding page.

## Setting Up the Remote Control to Work with Other Connected Equipment

This remote control is set by default to operate the basic functions of this Sony TV, most Sony DVDs and Sony VCRs when batteries are initially installed. To control VCRs and DVDs of other major brands, and certain Sony VCR models, please complete the following steps:

Before you start, look up the three digit code for your brand of DVD or VCR from the list on page 22. For those brands that have more than one code, enter the first code number.



- 1** Press the Media Selector (MODE) button on the remote control repeatedly until the required VCR or DVD green light lights up.

**Note**

- If the Media Selector is in the TV position, code numbers will not be stored.

- 2** Before the green light goes out, press and hold the yellow button for approximately six seconds until the green light starts flashing.

---

**3** While the green light is flashing, enter all three digits of the code for your brand using the number buttons on the remote control.

**Note**

- If your selected code is entered correctly, all three green lights will be lit momentarily.

---

**4** Turn on your VCR or DVD and check that the main functions work.

**Notes**

- If your equipment is not working or some of the functions do not work, please check to be sure you entered the correct code set or try the next code listed against the brand.
- Your brand codes may be lost if weak batteries are not replaced within a few minutes. To reset your DVD or VCR code number, please repeat the above steps. A small label is attached inside the battery cover to allow you to record your brand codes.
- Not all brands are covered and not all models of every brand are covered.

---

**VCR Brand List**

| <b>Brand</b> | <b>Code</b>                                 |
|--------------|---|
| SONY (VHS)   | 301, 302, 303, 308, 309, 362                |
| SONY (BETA)  | 303, 307, 310                               |
| SONY (DV)    | 304, 305, 306                               |
| AIWA*        | 325, 331, 351                               |
| AKAI         | 326, 329, 330                               |
| DAEWOO       | 342, 343                                    |
| GRUNDIG      | 358, 355, 360, 361, 320, 351                |
| HITACHI      | 327, 333, 334                               |
| JVC          | 314, 315, 322, 344, 352, 353, 354, 348, 349 |
| LG           | 332, 338                                    |
| LOEWE        | 358, 355, 360, 361, 320, 351                |
| MATSUI       | 356, 357                                    |
| MITSUBISHI   | 346, 347                                    |
| ORION        | 328   |
| PANASONIC    | 321, 323                                    |
| PHILIPS      | 311, 312, 313, 316, 317, 318, 358, 359      |
| SAMSUNG      | 339, 340, 341, 345                          |
| SANYO        | 335, 336                                    |
| SHARP        | 324   |
| THOMSON      | 319, 350                                    |
| TOSHIBA      | 337   |

---

**DVD Brand List**

| <b>Brand</b> | <b>Code</b>                  |
|--------------|------------------------------|
| SONY         | 001                          |
| AIWA*        | 021                          |
| DENON        | 018, 027, 020, 002           |
| GRUNDIG      | 009, 028, 023, 024, 016, 003 |
| HITACHI      | 025, 026, 015, 004           |
| JVC          | 006, 017                     |
| KENWOOD      | 008                          |
| LG           | 015, 014                     |
| LOEWE        | 009, 028, 023, 024, 016, 003 |
| MAGNAVOX     | 009, 028, 023, 024, 016, 003 |
| MATSUI       | 013, 016                     |

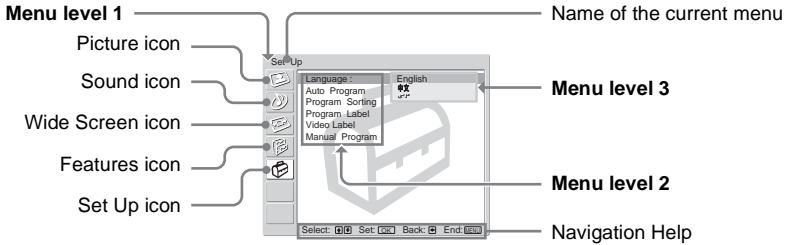
**DVD Brand List**



|            |                              |
|------------|------------------------------|
| MICROMEDIA | 009                          |
| MITSUBISHI | 010                          |
| ONKYO      | 022                          |
| OPTINUS    | 004                          |
| PANASONIC  | 018, 027, 020, 002           |
| PHILIPS    | 009, 028, 023, 024, 016, 003 |
| PIONEER    | 004                          |
| RCA        | 005                          |
| SAMSUNG    | 011, 014                     |
| SANYO      | 007                          |
| SHARP      | 019, 027                     |
| THOMSON    | 012                          |
| TOSHIBA    | 003                          |
| YAMAHA     | 018, 027, 020, 002           |

\* If an AIWA VCR or DVD does not work even though you enter the code for AIWA, enter the code for SONY instead.





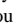
## Introducing the Menu System

The MENU button lets you open a menu and change the settings of your TV. The following is an overview of the menu system.



| Level 1  | Level 2/Level 3   | Level 3/Level 4/Function  |
|--|---|---|
| "Picture"<br> | "Picture Mode"<br><br>"Picture Adjustment"<br>(appears when "Picture Mode" is set to "Personal")            | Selects the picture mode:<br>"Dynamic" → "Standard" → "Personal"<br><br>Adjusts the "Personal" option:<br>"Picture" → "Brightness" → "Color" → "Hue"* → "Sharpness" → "3D NR" → "Dynamic Picture" → "Color Temperature" → "Reset"<br>* "Hue" can only be adjusted for an NTSC color signal.   |
| "Sound"<br>   | "Sound Mode"<br><br>"Treble"<br><br>"Bass"<br><br>"Balance"<br><br>"Intelligent Volume"<br><br>"Dual Sound" | Selects the sound mode:<br>"Dynamic" → "Natural" → "Off" → "Dolby Virtual"<br><br>Adjusts higher-frequency sounds.<br><br>Adjusts lower-frequency sounds.<br><br>Adjusts the balance between the left and right speaker volume.<br><br>Activates or deactivates the Intelligent Volume feature.<br><br>For a stereo broadcast, select "Stereo" or "Mono".<br>For a bilingual broadcast, select "Main", "Sub" or "Mono". |



| Level 1   | Level 2/Level 3   | Level 3/Level 4/Function   |
|---|-------------------|--|
| “Wide Screen”<br> | “Auto Wide”       | Selects an optimum wide screen mode automatically.   |
|   | “Wide Mode”       | Selects the wide screen mode:<br>“Wide Zoom” → “Normal”* → “Full” → “Zoom”<br>* You can select when receiving a 4:3 source (standard definition source).   |
|   | “4:3 Default”     | Changes the picture to “Wide Zoom” or “Normal” when the normal 4:3 picture with ID-1 or 480i/480p format signal without ID-1 is received.  |
|   | “Screen Shift”    | Selects “V Center” to move the screen up or down.<br>Selects “H Center” to move the screen to the left or right.   |
| “Features”<br>    | “Eco Mode”        | Activates or deactivates “Eco Mode” feature.   |
|   | “Screen Saver”    | Reduces image retention. “Orbit” moves the picture position to reduce image retention. “All White” displays a white screen to reduce image retention.  |
| “Set Up”<br>      | “Language”        | Changes the menu language:<br>“English” → “中文” (Chinese) → “عربي” (Arabic)   |
|   | “Auto Program”    | The “Auto Program” menu is displayed.<br>Presets channels automatically.   |
|   | “Program Sorting” | Changes the order of the preset channels.  |
|   | “Program Label”   | Assigns labels (such as station names) to the preset channels.   |
|   | “Video Label”     | Assigns labels to the audio/video equipment connected to the TV.   |
|   | “Video Input”     | Selects the input to which the audio/video equipment is connected.<br>“Video 1” → “Video 2” → “Video 3” → “HD/DVD 1” → “HD/DVD 2”  |
|   | “Label”           | Selects one of the prefixed labels or assign your own label in “Edit” position. When you select “Video 1”, the displayed label changes as follows:<br>“Video 1” → “VCR” → “SAT” → “Game” → “Edit” → “Skip”   |
|   |                   | <div style="background-color: black; color: white; padding: 2px; text-align: center;"><b>Note</b></div> If you select “Skip,” your TV skips this input source when you press  /  . |
|   | “Manual Program”  | The “Manual Program” menu is displayed. Presets channels manually.   |

### To restore the factory settings

Press the RESET button on the rear panel of the TV.

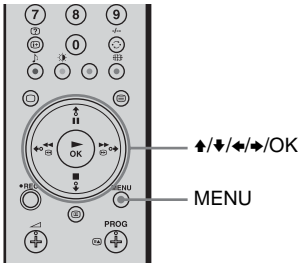
The settings other than the following items in the menu can be reset by using the RESET button:

- “Language”
- “Preset channel”
- “Dual Sound”

---

## How to use the menu

Your TV uses an on-screen menu system to guide you through the operations. Use the following buttons on the remote control to operate the menu system.



---

### 3 Press MENU to turn off the menu.



---

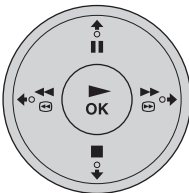
### 1 Press MENU to switch the first level menu on.



---

### 2 Do the following to operate the menu.

- To highlight the desired menu or option, press **↓** or **↑**.
- To enter the selected menu or option, press **OK**.
- To return to the last menu or option, press **←**.
- To alter the settings of your selected option, press **↙/↘/↖/↗** or **→**.
- To confirm your selection, press **OK**.



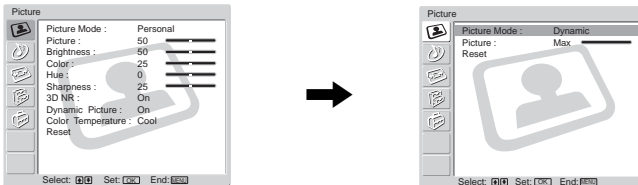
## Picture

The “Picture” menu allows you to alter the picture adjustments.

### To do this:

After selecting the item you want to alter, press **OK**, then press  $\downarrow/\uparrow/\leftarrow$  or  $\rightarrow$  repeatedly to adjust it.

This menu also allows you to customise the picture quality for the “Personal” mode based on the program you are watching.



### Picture Mode

#### Dynamic

For enhanced picture contrast and sharpness.

#### Standard

For a finely detailed picture.

#### Personal

For your own custom settings.

### Picture

Press  $\downarrow$  or  $\leftarrow$  to reduce picture contrast.  
Press  $\uparrow$  or  $\rightarrow$  to enhance picture contrast.

### Brightness

Press  $\downarrow$  or  $\leftarrow$  to darken the picture.  
Press  $\uparrow$  or  $\rightarrow$  to brighten the picture.

### Color

Press  $\downarrow$  or  $\leftarrow$  to decrease color intensity.  
Press  $\uparrow$  or  $\rightarrow$  to increase color intensity.

### Hue

Press  $\downarrow$  or  $\leftarrow$  to decrease the green tones.  
Press  $\uparrow$  or  $\rightarrow$  to increase the green tones.

#### Note

**Hue** can only be adjusted for an NTSC color signal.

### Sharpness

Press  $\downarrow$  or  $\leftarrow$  to soften the picture.  
Press  $\uparrow$  or  $\rightarrow$  to sharpen the picture.

### 3D NR (Noise Reduction)

#### On/Off

Select to reduce the noise level.

#### Note

**3D NR** (Noise Reduction) cannot be adjusted for an input signal from the Y, Pb/Cb, Pr/Cr jacks of  $\text{---}1$  or  $\text{---}2$ .

### Dynamic Picture

#### On/Off

Select to enhance the picture contrast.

---

**Color Temperature****Cool/Neutral/Warm**

Select to give bright colors a red tint (setting is variable from **Cool** to **Warm**).

---

**Reset****Cancel/OK**

Select **OK** to reset the picture to the factory preset levels.

---

**Note**

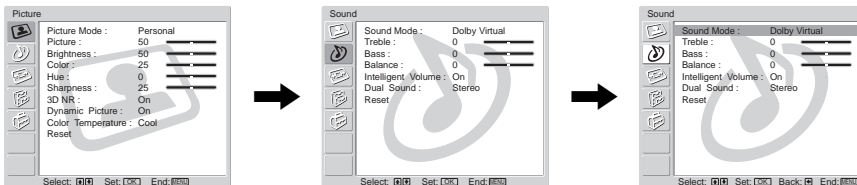
Only "Picture Mode," "Picture," and "Reset" can be adjusted when "Picture Mode" is set to "Dynamic" or "Standard."

# Sound

The “Sound” menu allows you to alter the sound adjustments.

## To do this:

After selecting the item you want to alter, press OK, then press  $\downarrow/\uparrow/\leftarrow/\rightarrow$  repeatedly to adjust it.



## Sound Mode

### Dynamic

Intensifies clarity and presence of sound for better intelligibility and musical realism by using the “BBE High Definition Sound system.”

### Natural

Enhances clarity, detail and presence of sound by using the “BBE High Definition Sound system.”

### Off

No effect.

### Dolby Virtual \*

Uses the TV speakers to simulate the surround effect produced by a multi channel system.

### Notes

- If you set “Intelligent Volume” to “On” when **Dolby Virtual** is selected, the **Sound Mode** option automatically changes to “Natural.”
- The sound from the headphones is not affected when the **Sound Mode** option is set to “Natural,” “Dynamic” or “Dolby Virtual.”

Licensed by BBE Sound, Inc. under USP4638258, 4482866. “BBE” and BBE symbol are trademarks of BBE Sound, Inc.

\* Manufactured under licence from Dolby Laboratories. “Dolby,” “Pro Logic,” and the double-D symbol are trademarks of Dolby Laboratories.

## Treble

Press  $\downarrow$  or  $\leftarrow$  to decrease higher-frequency sounds.  
Press  $\uparrow$  or  $\rightarrow$  to increase higher-frequency sounds.

## Bass

Press  $\downarrow$  or  $\leftarrow$  to decrease lower-frequency sounds.  
Press  $\uparrow$  or  $\rightarrow$  to increase lower-frequency sounds.

## Balance

Press  $\downarrow$  or  $\leftarrow$  to emphasise the left speaker.  
Press  $\uparrow$  or  $\rightarrow$  to emphasise the right speaker.

---

## Intelligent Volume

### On/Off

Volume level of the channels will stay the same, independent of the broadcast signal (e.g. in the case of advertisements).

#### Note

If you set "Sound Mode" to "Dolby Virtual," **Off** is selected automatically.

---

## Dual Sound

### Stereo/Mono

For a stereo broadcast, select **Stereo** or **Mono**.

### Main/Sub/Mono

For a bilingual broadcast, select **Main** for sound channel 1, **Sub** for sound channel 2, or **Mono** for a mono channel, if available.

#### Note

If you select other equipment connected to the TV, set the **Dual Sound** option to **Stereo**, **Main**, or **Sub**.

---

## Reset

### Cancel/OK

Select **OK** to reset the sound to the factory preset.





#### Note





Only "Treble," "Bass," and "Balance" are restored to the factory settings when you reset the sound.

---

---

## If the sound is distorted or noisy when receiving a monaural program through the VHF/UHF (antenna) terminal

Press  or  repeatedly until "Mono" appears on the screen.

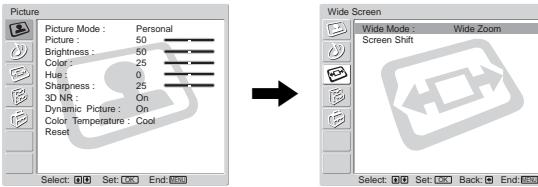
To cancel the monaural sound setting, press  or  repeatedly until "Auto" appears on the screen.

#### Notes

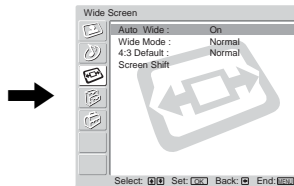
- The "Mono" or "Auto" setting is memorized for each program position.
- You cannot receive a stereo broadcast signal when the TV is in the "Mono" setting. Normally, set the TV to "Auto".

## Wide Screen

The “Wide Screen” menu allows you to alter the screen adjustments.



When receiving NTSC video input signal




### Auto Wide

The “Auto Wide” option allows you to automatically change the aspect ratio of the screen.

#### To do this:

- 1 After selecting this option, press **OK**.
- 2 Press **↓** or **↑** to select **On** (if you want the TV to automatically switch the screen format according to the video input signal) or **Off** (if you want to keep your preference).

#### Notes

- Even if you have selected **On** or **Off** in the **Auto Wide** option, you can always modify the format of the screen by pressing  repeatedly on the remote control.
- **Auto Wide** functions only when the TV receives NTSC video input signal.

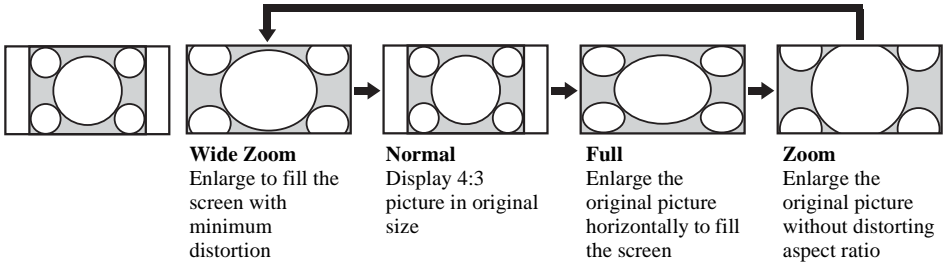
### Wide Mode

The “Wide Mode” option allows you to modify the format of the screen to fit the 16:9 screen.

#### To do this:

- 1 After selecting this option, press **OK**.
- 2 Press **↓** or **↑** to select the desired screen format and press **OK**.

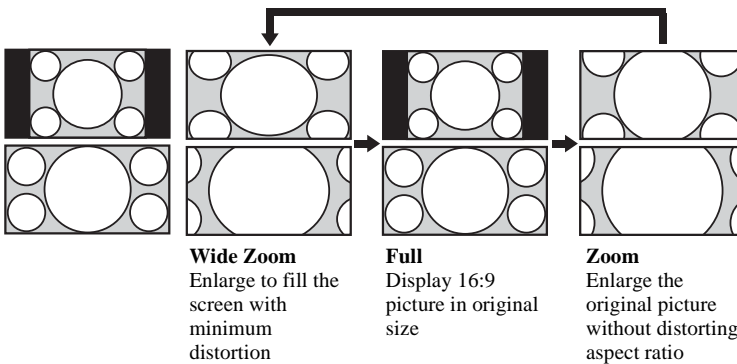
### 4:3 source (Standard definition source)



#### Note

You can adjust the vertical position of the image when **Wide Zoom** or **Zoom** is selected.

### 16:9 source (High definition source)



#### Notes

- You can adjust the vertical position of the image when **Wide Zoom** or **Zoom** is selected.
- When HD source is received, the wide mode settings you preset will be canceled if you change the input by pressing the  $\leftarrow$ , PROG +/- or  $\rightarrow$  button.

### 4:3 Default

The “4:3 Default” option allows you to display a 4:3 picture in “Wide Zoom” or in “Normal” mode.

#### To do this:

- 1 After selecting this option, press **OK**.
- 2 Press  $\downarrow$  or  $\uparrow$  to select the desired mode and press **OK**.



---

**Screen Shift**

The “Screen Shift” option allows you to adjust the position of the picture for each screen format.

**To do this:**

- 1 After selecting this option, press **OK**.
- 2 Press **↓** or **↑** to select the desired option and press **OK**. Then press **↙/↘/↔** or **↻** to adjust the position of the picture.

**V Center** (Vertical Center)

Press **↑** to move the screen up.

Press **↓** to move the screen down.

**H Center** (Horizontal Center)

Press **←** to move the screen to the left.

Press **→** to move the screen to the right.

**Reset**

Select **OK** to reset to the factory settings.

**Note**

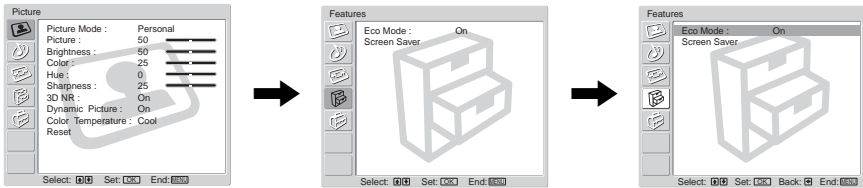
When “Wide Mode” is set to “Normal” or “Full,” **V Center** (Vertical Center) cannot be adjusted.

---

---

## Features

The “Features” menu allows you to alter various adjustments of the TV.



---

### Eco Mode

The “Eco Mode” option allows you to reduce the power consumption of the TV.

#### To do this:

- 1 After selecting this option, press **OK**.
- 2 Press **↓** or **↑** to select **On** or **Off**.

---

### Screen Saver

The “Screen Saver” option allows you to reduce image retention.

#### Notes

If the following images are displayed for an extended period time, image retention (afterimage) in areas of the screen may result due to the characteristics of the Plasma Display Panel.

- Black bars at the top and bottom that appear with a wide video source (Letterbox picture).
- Black bars to the left and right that appear with a 4:3 video source (conventional TV broadcasts).
- Video game sources
- DVD on-screen menu displays
- On-screen menus, channel numbers, etc., of connected equipment such as Set top box, Cable modem, VCR, etc.

#### To do this:

- 1 After selecting this option, press **OK**.
- 2 Press **↓** or **↑** to select the following option and press **OK**.  
Then press **↓** or **↑** to move the picture position (**Orbit**), or turn the screen to white (**All White**) to reduce image retention.

**All White:** Select **On** to turn the screen to white.

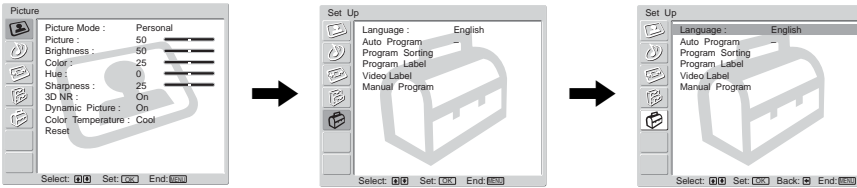
**Orbit:** Select **On** to move the position.

#### Notes

- **All White** function finishes automatically after 30 minutes. If image retention is still present, repeat the above.
  - To cancel **All White** function halfway, press any buttons (except the VIDEO I/O, MODE, REC,  $\triangle$  +/-,  $\otimes$  or  $\flat$  buttons) on the remote control.
-

# Set Up

The “Set Up” menu allows you to alter various options on the TV.



## Language

The “Language” option allows you to select the language that the menus are displayed in.

### To do this:

- 1 After selecting this option, press **OK**.
- 2 Follow step 3 of “Set Up Your TV Automatically” on page 11.

## Auto Program

The “Auto Program” option allows you to automatically search and store all available channels (TV Broadcast).

### To do this:

- 1 After selecting this option, press **OK**.
- 2 Follow steps 4 and 5 of “Set Up Your TV Automatically” on page 12.

## Program Sorting

The “Program Sorting” option allows you to change the order in which the channels (TV Broadcast) appear on the screen. Name the channels first, performing the “Program Label” procedures below, then start the program sorting.

### To do this:

- 1 After selecting this option, press **OK**.
- 2 Press  $\downarrow$  or  $\uparrow$  to select the program number with the channel you want to rearrange, then press  $\rightarrow$ .
- 3 Press  $\downarrow$  or  $\uparrow$  to select the new program number position for your selected channel, then press  $\leftarrow$ .
- 4 Repeat steps 2 and 3 if you want to change the order of the other channels.

## Program Label

The “Program Label” option allows you to name a channel using up to five characters (letters or numbers).

### To do this:

- 1 After selecting this option, press **OK**.
- 2 Press  $\downarrow$  or  $\uparrow$  to select the program number with the channel you want to name, then press **OK**.
- 3 Press  $\downarrow/\uparrow/\leftarrow/\rightarrow$  to select the character, then press **OK**.
- 4 When you have finished, press  $\downarrow/\uparrow/\leftarrow/\rightarrow$  to select the word “End” on the screen and press **OK** to exit the character input screen.
  - If you input a wrong character, select the character using  $\square$  or  $\square$  on the screen. Then press  $\downarrow/\uparrow/\leftarrow/\rightarrow$  to select the correct character and press **OK**.
  - For a blank, select  $\square$  on the screen and press **OK**.

---

## Video Label

The “Video Label” option (A-B) allows you to:

- A)** Designate a name for any external equipment you have connected to the TV.

**To do this:**

- 1 After selecting this option, press **OK**.
- 2 Press  $\blacktriangledown$  or  $\blacktriangleup$  to select the input source you want to name, then press **OK**.
- 3 A label automatically appears in the label column.
  - a) If you want to use one of the predefined labels, press  $\blacktriangledown$  or  $\blacktriangleup$  to select the desired label: **Video 1**, **Video 2**, **Video 3**, **HD/DVD1** or **HD/DVD2**, then press **OK**.
  - b) If you want to set a different label, select “Edit” and press **OK**. Then with the first element highlighted, press  $\blacktriangledown/\blacktriangleup/\blacktriangleleft$  or  $\blacktriangleright$  to select the character, then press **OK**.  
When you have finished, press  $\blacktriangledown/\blacktriangleup/\blacktriangleleft$  or  $\blacktriangleright$  to select the word “End” on the screen and press **OK** to exit the character input screen.

- If you input a wrong character, select the character using  $\square$  or  $\square$  on the screen. Then press  $\blacktriangledown/\blacktriangleup/\blacktriangleleft$  or  $\blacktriangleright$  to select the correct character and press **OK**.
- For a blank, select  $\square$  on the screen and press **OK**.

- 
- B)** Skip any input sources that are not connected to any equipment, when you select the input source with the  $\text{↶}$  /  $\text{↷}$  buttons.

**To do this:**

- 1 After selecting this option, press **OK**.
- 2 Press  $\blacktriangledown$  or  $\blacktriangleup$  to select the input source you want to skip, then press **OK**.
- 3 Press  $\blacktriangledown$  or  $\blacktriangleup$  to select Skip, then press **OK**.

---

## Manual Program

The “Manual Program” option (A–D) allows you to:

- A)** Preset channels, one by one, in the program order of your choice.

**To do this:**

- 1 After selecting this option, press **OK**.
  - 2 Highlight the **Program** option and press **OK**.
  - 3 Press  $\blacktriangledown$  or  $\blacktriangleup$  to select a program number for which you want to preset the channel, then press  $\blacktriangleleft$ . If you do not want to preset other options for the channel, press **OK** instead of  $\blacktriangleleft$  and go to step 8.
  - 4 After selecting the **TV System** option, press **OK**.
  - 5 Press  $\blacktriangledown$  or  $\blacktriangleup$  to select the TV Broadcast system (B/G, D/K, I), then press  $\blacktriangleleft$ . If you do not want to preset other options for the channel, press **OK** instead of  $\blacktriangleleft$  and go to step 8.
  - 6 After selecting the **Channel** option, press **OK**.
  - 7 Press the number buttons to enter the channel frequency of the TV Broadcast directly. If you do not know the channel frequency, press  $\blacktriangledown$  or  $\blacktriangleup$  to search for it.  
When you have tuned the desired channel, press **OK**.
  - 8 Highlight the **Confirm** option and press **OK**. Then press  $\blacktriangledown$  to select **OK** and finally press **OK** to store your channel selection.
- Repeat all the above steps to tune and store other channels.
-

---

**B)** Label a channel using up to five characters (letters or numbers).

**To do this:**

**1** Press **PROG +/-** to select the program number with the channel you want to name.

**Note**

You cannot select the program number set to skip in the “Skip” option (see step D below).

- 2** When the program you want to name appears on the screen, select the **Program Label** option and press **OK**.
- 3** Press **▼/▲/◀/▶** to select the first character, then press **OK**.
- 4** When you have finished, press **▼/▲/◀/▶** to select the word “End” on the screen and press **OK** to exit the character input screen.
- 5** Highlight the **Confirm** option and press **OK**. Then press **▼** to select **OK** and finally press **OK** to store the label.

- If you input a wrong character, select the character using  or  on the screen. Then press **▼/▲/◀/▶** to select the correct character and press **OK**.
- For a blank, select  on the screen and press **OK**.

---

**C)** Normally the automatic fine tuning (the **Fine** option default setting) will give the best possible picture, however you can manually fine-tune the TV to obtain a better picture if the picture is distorted.

**To do this:**

**1** Press **PROG +/-** to select the program number with the channel you want to fine-tune manually.

**Note**

You cannot select the program number set to skip in the “Skip” option (see step D below).

- 2** When the program you want to fine-tune appears on the screen, select the **Fine** option and press **OK**.
- 3** Press **▼** or **▲** to adjust the fine tuning between -15 and +15 and press **OK**.
- 4** Highlight the **Confirm** option and press **OK**. Then press **▼** to select **OK** and finally press **OK** to store your choice.

To restore automatic fine tuning, select **Auto** in step 3 above.

---

---

D) Skip any unwanted program numbers when they are selected with the **PROG +/-** buttons.

**To do this:**

- 1 Highlight the **Program** option and press **OK**. Then press **↓** or **↑** to select the program number you want to skip.
- 2 Press **←** to exit the **Program** option, then select the **Skip** option and press **OK**.
- 3 Press **↓** or **↑** to select **On** and press **OK**.
- 4 Highlight the **Confirm** option and press **OK**. Then press **↓** to select **OK** and finally press **OK** to store your choice.

To cancel this function afterwards, select the channel number directly, using the number buttons. Then, enter the menu operation and select **Off** instead of **On** in step 3 above.

**Note**

While you are setting the "Manual Program" option (A-D):

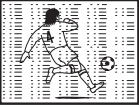





When you highlights the **Confirm** option and press **Cancel**, the screen remains as it is, though the setting has been canceled.
















A new setting will not be stored until you press **OK** when you highlights the **Confirm** option.

---



# Troubleshooting

If you have any problem while viewing your TV, please check the following troubleshooting guide. If the problem persists, contact your Sony dealer.

| Symptom  | Possible cause   | Solutions   | Page   |
|--|--|---|--|
| <b>Snowy picture</b><br>     | <ul style="list-style-type: none"> <li>The connection is loose or the cable is damaged.</li> </ul>       | <ul style="list-style-type: none"> <li>Check the antenna cable and connection on the TV, VCR and on the wall.</li> </ul>  | —  |
|  | <ul style="list-style-type: none"> <li>Channel presetting is inappropriate or incomplete.</li> </ul>     | <ul style="list-style-type: none"> <li>Display the “Set Up” menu and select “Manual Program” to preset the channel again.</li> </ul>  | 36   |
| <b>Noisy sound</b><br>       | <ul style="list-style-type: none"> <li>The antenna type is inappropriate.</li> </ul>                     | <ul style="list-style-type: none"> <li>Check the antenna type (VHF/UHF). Contact a Sony dealer for advice.</li> </ul>   | —  |
|  | <ul style="list-style-type: none"> <li>The antenna direction needs adjustment.</li> </ul>                | <ul style="list-style-type: none"> <li>Adjust the antenna direction. Contact a Sony dealer for advice.</li> </ul>   | —  |
|  | <ul style="list-style-type: none"> <li>Signal transmission is low.</li> </ul>                            | <ul style="list-style-type: none"> <li>Try using a booster.</li> </ul>  | —  |
| <b>Distorted picture</b><br> | <ul style="list-style-type: none"> <li>Broadcast signals are too strong.</li> </ul>                      | <ul style="list-style-type: none"> <li>Turn off or disconnect the booster if it is in use.</li> </ul>   | —  |
|  | <b>Noisy sound</b><br>   |   |  |
| <b>Good picture</b><br>    | <ul style="list-style-type: none"> <li>The TV system setting is inappropriate.</li> </ul>                | <ul style="list-style-type: none"> <li>If the sound of all the channels are noisy, display the “Set Up” menu and select “Auto Program” to preset the channels again.</li> </ul> | 35   |
|  | <b>Noisy sound</b><br> |   | <ul style="list-style-type: none"> <li>If the sound of some channels is noisy, select the channel, then display the “Set Up” menu and select “Manual Program”, then select the appropriate TV system.</li> </ul> |

| Symptom   | Possible cause   | Solutions   | Page     |
|---|--|---|----------|
| <b>No picture</b><br>                  | <ul style="list-style-type: none"> <li>The power cord, antenna or VCR is not connected.</li> </ul>   | <ul style="list-style-type: none"> <li>Check the power cord, antenna and the VCR connections.</li> </ul>  | —        |
|   | <ul style="list-style-type: none"> <li>The TV is not turned on.</li> </ul>   | <ul style="list-style-type: none"> <li>Press I/⏻ on the remote control.</li> <li>Press ⏻ on the TV to turn off the TV for about 5 seconds, then turn it on again.</li> </ul>  | 18<br>17 |
| <b>No sound</b><br>                    |  |   |          |
| <b>No picture</b><br>                  | <ul style="list-style-type: none"> <li>The picture off feature is activated. (The  (Picture off) indicator lights up in blue.)</li> </ul> | <ul style="list-style-type: none"> <li>Press any button except for VIDEO I/⏻ MODE, REC,  +/-,  or  to cancel the picture off feature.</li> </ul> | 19       |
| <b>Good picture</b><br>                | <ul style="list-style-type: none"> <li>The volume level is too low.</li> </ul>   | <ul style="list-style-type: none"> <li>Press  + to increase the volume level.</li> </ul>   | 18       |
|   | <ul style="list-style-type: none"> <li>The sound is muted.</li> </ul>  | <ul style="list-style-type: none"> <li>Press , I/⏻ and  + to cancel the muting.</li> </ul>  | 18       |
| <b>No sound</b><br>                    |  |   |          |
| <b>Dotted lines or stripes</b><br>    | <ul style="list-style-type: none"> <li>There is local interference from cars, neon signs, hair dryers, power generators, etc.</li> </ul>   | <ul style="list-style-type: none"> <li>Do not use a hair dryer or other equipment near the TV.</li> <li>Adjust the antenna direction for minimum interference. Contact a Sony dealer for advice.</li> </ul>   | —<br>—   |
| <b>Double images or "ghosts"</b><br> | <ul style="list-style-type: none"> <li>Broadcast signals are reflected by nearby mountains or buildings.</li> </ul>  | <ul style="list-style-type: none"> <li>Use a highly directional antenna.</li> <li>Use the fine tuning function.</li> </ul>  | —<br>37  |
|   | <ul style="list-style-type: none"> <li>The antenna direction needs adjustment.</li> </ul>  | <ul style="list-style-type: none"> <li>Adjust the antenna direction. Contact a Sony dealer for advice.</li> </ul>   | —        |
|   | <ul style="list-style-type: none"> <li>Use of a booster is inappropriate.</li> </ul>   | <ul style="list-style-type: none"> <li>Turn off or disconnect the booster if it is in use.</li> </ul>   | —        |
| <b>No color</b><br>                  | <ul style="list-style-type: none"> <li>The color level setting is too low.</li> </ul>  | <ul style="list-style-type: none"> <li>Display the "Picture Mode" menu and select "Personal" of "Picture Mode", then adjust the "Color" level under "Picture".</li> </ul>   | 27       |
|   | <ul style="list-style-type: none"> <li>The antenna direction needs adjustment.</li> </ul>  | <ul style="list-style-type: none"> <li>Adjust the antenna direction. Contact a Sony dealer for advice.</li> </ul>   | —        |
| <b>TV cannot receive stereo broadcast signal.</b>   | <ul style="list-style-type: none"> <li>The stereo reception setting is inappropriate.</li> </ul>   | <ul style="list-style-type: none"> <li>Display the "Dual Sound", and check the setting.</li> </ul>  | 30       |



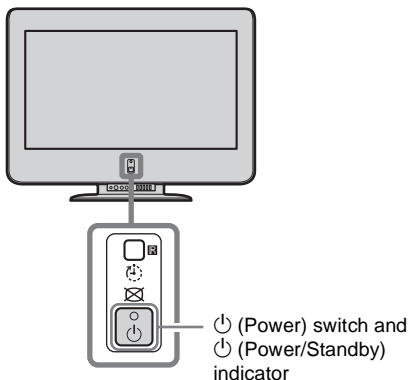
| Symptom  | Possible cause  | Solutions   | Page    |
|--|---|---|---------|
| <b>Stereo broadcast sound switches on and off or is distorted. or The sound switches between stereo and monaural frequently.</b>                         | • The connection is loose or the cable is damaged.  | • Check the antenna cable and connection on the TV, VCR and on the wall.                                | 9       |
|  | • The antenna direction needs adjustment.   | • Adjust the antenna direction. Contact a Sony dealer for advice.                                       | —       |
|  | • The broadcast signal has a transmission problem.  | • Display the “Dual Sound”, and check the setting.  | 30      |
| <b>Teletext is not displayed when you press .</b>                       | • The channel carries no Teletext broadcast.  | —   | —       |
| <b>Teletext display is incomplete (snowy picture or double images). (Teletext is not displayed on the area that is not covered by teletext service).</b> | • Connection is loose or the cable is damaged.  | • Check the antenna cable and connection on the TV, VCR, and at the wall.                               | 9       |
|  | • The antenna direction is inappropriate.   | • Adjust the antenna direction. Contact a Sony dealer for advice.                                       | —       |
|  | • Signal transmission is too low.   | • Try using a booster.<br>• Use the fine tuning function.   | —<br>37 |
| <b>Lines moving across the TV screen.</b>  | • There is interference from external sources, e.g., heavy machineries, nearby broadcast station.   | • Use the fine tuning function.   | 37      |
| <b>The screen flickers when turning on TV.</b>   | • This caused by feature of the Plasma Display Panel, and dose not indicate a malfunction of the TV.  | —   | —       |
| <b>The wide screen mode changes spontaneously when “Auto Wide” is “On”.</b>  | • During a transition between two programs, the TV detects the optimum wide screen mode. During this period, an irregular wide screen mode may appear.  | —   | 31      |
|  | • The wide screen mode is switched automatically according to the received signal with an ID-1 signal.  | —   | 31      |
|  | • The <b>Auto Wide</b> feature stops working temporarily when you have pressed  , and functions again after a while.               | • To fix in the manually selected wide screen mode, set “Auto Wide” to “Off” in the “Wide Screen” menu. | 31      |
| <b>Cannot play shooting games.</b>   | • Some shooting games which involve pointing a light beam at the TV screen with an electronic gun or rifle cannot be used with your TV. For detail, see the instruction manual supplied with the video game software. | —   | —       |

| Symptom   | Possible cause  | Solutions   | Page        |
|---|---|---|-------------|
| <b>TV cabinet creaks.</b>                                     | <ul style="list-style-type: none"> <li>Changes in room temperature sometimes make the TV cabinet expand or contract, causing a noise. This does not indicate a malfunction.</li> </ul>  | —   | —           |
| <b>Static discharge is felt when touching the TV cabinet.</b> | <ul style="list-style-type: none"> <li>This is the same static discharge that is felt when touching metal door handles or car doors especially when the air is dry, for example in winter. This does not indicate a malfunction.</li> </ul> | —   | —           |
| <b>Stripe during playback/recording of a VCR.</b>             | <ul style="list-style-type: none"> <li>Video head interference.</li> </ul>  | <ul style="list-style-type: none"> <li>Keep your VCR away from the TV.</li> <li>Leave a space of 30 cm between your VCR and the display unit to avoid noise.</li> <li>Avoid installing your VCR in front of the display unit or at the side of the display unit.</li> </ul>   | —<br>—<br>— |
| <b>Audio noise.</b>   | <ul style="list-style-type: none"> <li>Communication problems may occur if the infrared communication equipment (e.g., infrared cordless headphones) is used near the TV.</li> </ul>  | <ul style="list-style-type: none"> <li>Use headphones other than infrared cordless headphones. Also, if you use the infrared communication equipment other than infrared cordless headphones, move the infrared transceiver away from the TV until the noise eliminated, or move the transmitter and receiver of the infrared communication equipment closer together.</li> </ul> | —           |

---

## Self-diagnosis Function

Your TV is equipped with a self-diagnosis function. If there is a problem with your TV, the ⏻ (Power/Standby) indicator flashes red. The number of times the ⏻ (Power/Standby) indicator flashes indicates the possible causes.



---

### 1 Measure how long the ⏻ (Power/Standby) indicator flashes and stops flashing.

For example, the indicator flashes for two seconds, stops flashing for one second, and flashes for two seconds.

---

### 2 Press ⏻ (Power) to turn off your TV completely.


---

### 3 Inform your nearest Sony service center of how the ⏻ (Power/Standby) indicator flashes (duration and interval).

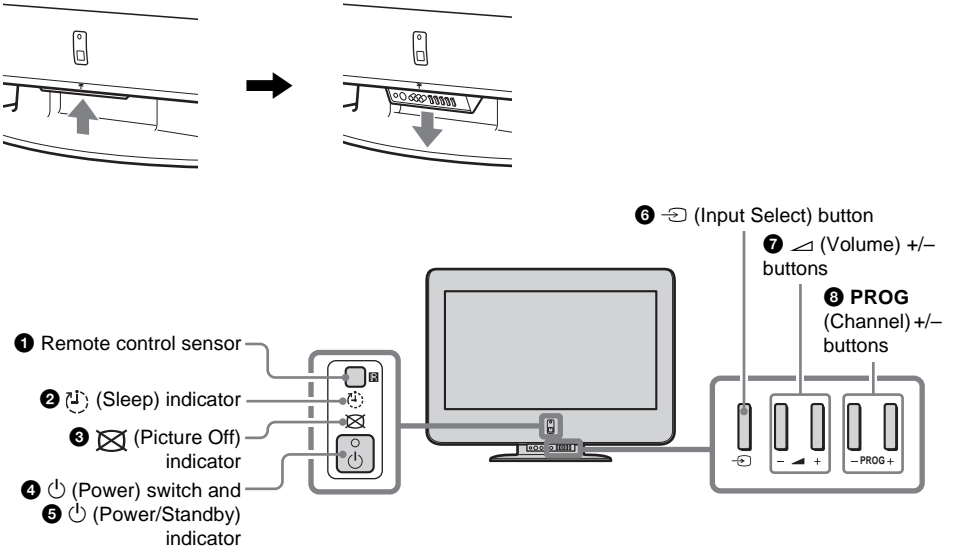
Be sure to note the model name and serial number located at the rear of your TV.






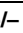
---

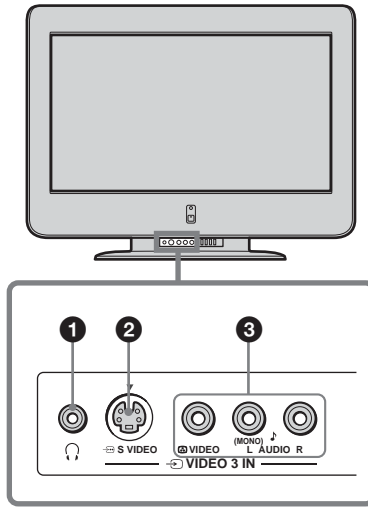
# Identifying Parts and Controls

To open the drop-down panel of your TV, push up the panel door just under the  mark until you hear a click, then the panel door will open.

## TV Front Panel



| Button/Indicator  | Function  | Page |
|---|---|------|
| ① Remote control sensor   | Receives remote control signals from TV's remote control.   | —    |
| ②  (Sleep) indicator         | When lit in red, indicates the Sleep Timer function is activated.   | 19   |
| ③  (Picture Off) indicator   | When lit in blue, indicates that the picture off feature is activated.  | 19   |
| ④  (Power) switch            | Turns off completely or turn on the TV.   | 17   |
| ⑤  (Power/Standby) indicator | Lights up in red when the TV is in standby mode. The indicator does not light up when the main power is turned off. | 17   |
| ⑥  (Input Select) button     | Selects TV or video input.  | 18   |
| ⑦  (Volume) +/- buttons      | Adjust volume.  | 18   |
| ⑧ <b>PROG (Channel) +/- buttons</b>   | Select program number.  | 17   |

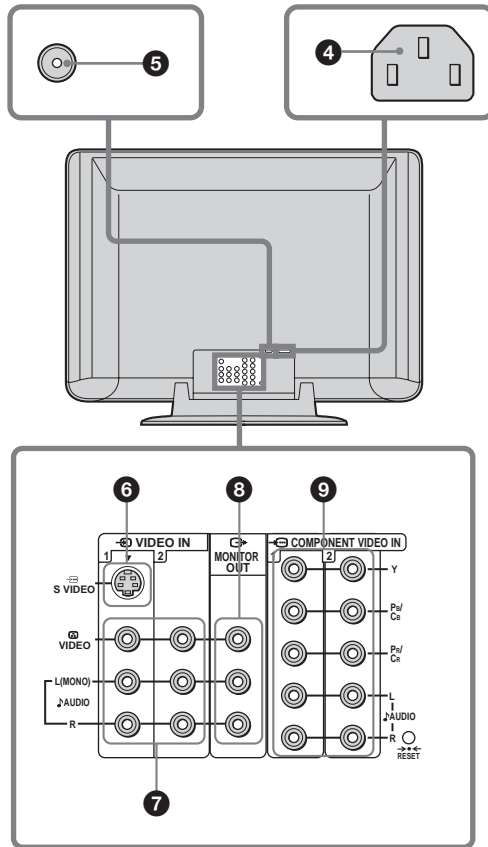


| Connector   | Function   | Page |
|---|--|------|
| <b>1</b> 🎧  | Headphone jack                                     | —    |
| <b>2</b> 📺 S VIDEO<br>📺 VIDEO 3 IN                                    | Connect to S video output of video equipment.      | 13   |
| <b>3</b> 📺 VIDEO/<br>🎵 AUDIO -L (MONO)/<br>🎵 AUDIO -R<br>📺 VIDEO 3 IN | Connect to video/audio outputs of video equipment. | 13   |

### Note

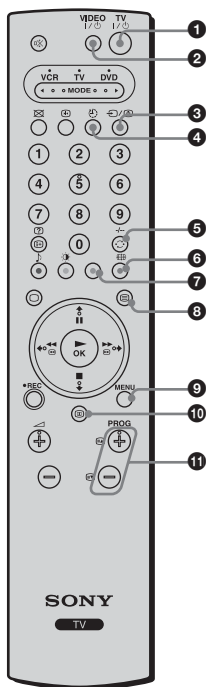
- To avoid a noisy picture, do not connect external equipment to connectors **2** and **3** at the same time.

## TV Rear Panel

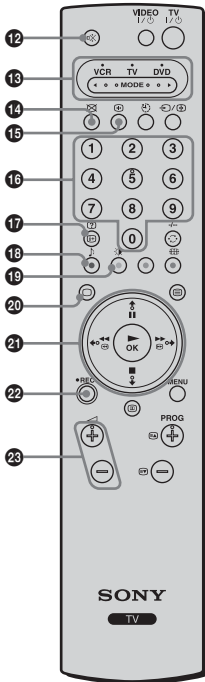


| Connector  | Function   | Page |
|--|--|------|
| <b>4</b> AC IN jack  | Connect the supplied AC power cord.                    | 8    |
| <b>5</b> VHF/UHF   | Connect the antenna cable.                             | 9    |
| <b>6</b> S VIDEO<br>VIDEO 1 IN   | Connect to S video outputs of video equipment.         | 10   |
| <b>7</b> VIDEO/<br>AUDIO -L (MONO)/<br>AUDIO -R<br>VIDEO 1/2 IN            | Connect to video/audio outputs of video equipment.     | 10   |
| <b>8</b> MONITOR OUT   | Connect to video/audio inputs of audio/video equipment | 14   |
| <b>9</b> Y, Pb/Cb, Pr/Cr<br>AUDIO -L<br>AUDIO -R<br>COMPONENT VIDEO 1/2 IN | Connect to component video outputs on a DVD player.    | 15   |

## Remote Control



| Button                             | Function   | Page |
|------------------------------------|--|------|
| <b>1</b> I/⏻                       | Turn off temporarily or turn on the TV.  | 17   |
| <b>2</b> VIDEO I/⏻                 | Turn on or off the VCR or DVD.   | —    |
| <b>3</b> ↵ / ⏻                     | • Select the input source.   | 18   |
|                                    | • Freeze a Teletext page.  | 21   |
| <b>4</b> ⏻                         | Set the TV to turn off automatically.  | 19   |
| <b>5</b> ⏻                         | <ul style="list-style-type: none"> <li>• When the TV is selected: Watch the last channel selected (last channel watched for at least 5 seconds).</li> <li>• When the VCR is selected: For Sony's VCR double-digit program numbers, e.g. 23, press this button first then press the 2 and 3.</li> </ul> | —    |
| <b>6</b> (blue)                    | • Select wide mode.  | 31   |
|                                    | • Access a Fastext menu.   | 21   |
| <b>7</b> (Yellow colored) (yellow) | • Program the remote control to operate your VCR or DVD.   | 21   |
|                                    | • Access a Fastext menu.   | 21   |
| <b>8</b>                           | Display teletext page on the TV picture.   | 20   |
| <b>9</b> MENU                      | Display the menu.  | 26   |
| <b>10</b>                          | This button does not function with this model.   | —    |
| <b>11</b> PROG + (⏻) / - (⏻)       | • Select program number.   | 17   |
|                                    | • Access the next or preceding Teletext page.  | 21   |



| Button                          | Function  | Page     |
|---------------------------------|---|----------|
| 12                              | Mute the sound.   | 18       |
| 13 <b>Media Selector (MODE)</b> | <ul style="list-style-type: none"> <li>Select the VCR, TV or DVD.</li> <li>Use with the number buttons to set up the remote control.</li> </ul> | —<br>21  |
| 14                              | Turn off the picture.   | 19       |
| 15                              | Temporarily freeze and review the picture.  | 20       |
| 16 0 – 9                        | Input numbers.  | 17       |
| 17                              | <ul style="list-style-type: none"> <li>Display on-screen information.</li> <li>Reveal Teletext concealed information.</li> </ul>                | 19<br>21 |
| 18                              | <ul style="list-style-type: none"> <li>Select sound mode.</li> <li>Access a Fastext menu.</li> </ul>  | 29<br>21 |
| 19                              | <ul style="list-style-type: none"> <li>Select picture mode.</li> <li>Access a Fastext menu.</li> </ul>  | 27<br>21 |
| 20                              | Display the TV program.   | 18       |
| 21                              | <ul style="list-style-type: none"> <li>Select, adjust and confirm selected items in the menu.</li> <li>Operate optional components.</li> </ul>  | 26-38    |
| 22 <b>•REC</b>                  | When the VCR is selected, record programs on your VCR.  | —        |
| 23                              | Adjust volume.  | 18       |



# Index

## Numerics

- 3D NR (Noise Reduction) **27**
- 4:3 Default **32**
- 4:3 source **32**
- 16:9 source **32**

## A

- AC plug holder **8**
- AC power cord **8**
- Antenna
  - Connect an Antenna **9**
- Audio/video equipment **14**
- Auto Program **12, 35**
- Auto Wide **31, 41**

## B

- Balance **29**
- Bass **29**
- Batteries
  - Insert the Batteries into the Remote Control **11**
- Brightness **27**

## C

- Color **27**
- Color Temperature **28**
- Connect
  - Antenna **9, 10**
  - Audio/video equipment **14**
  - Digital TV receiver **16**
  - DVD player **15**
  - Optional Components **13**
  - To the front of the TV **13**
  - VCR **9, 10**

## D

- Dual Sound **30, 40**
- DVD
  - Connecting a DVD player **15**
- DVD Brand List **22**
- Dynamic Picture **27**

## E

- Eco Mode **34**

## F

- Fasttext **21**
- Features menu **34**

## H

- High definition source **32**
- Hue **27**

## I

- Intelligent Volume **30**

## L

- Language **35**

## M

- Main **30**
- Manual Program **36**
- Menu
  - Features **34**
  - How to use **26**
  - Picture **27**
  - Set Up **35**
  - Sound **29**
  - Wide Screen **31**
- Menu System **24**
- Monaural **30**
- Mono **30**

## O

- Optional Components **13**

## P

- Picture **27**
- Picture Freeze Function **20**
- Picture menu **27**
- Picture Mode **27**
- Picture Off Function **19**
- Program Label **35**
- Program Sorting **35**

## R

- Remote Control
  - Buttons **47, 48**
  - Insert the Batteries into the Remote Control **11**
  - Setting up the remote control to work with other connected equipment **21**
- RESET **25**

## S

- Screen Saver **34**

Screen Shift **33**  
Self-diagnosis Function **43**  
Set Up menu **35**  
Sharpness **27**  
Sleep Timer Function **19**  
Sound menu **29**  
Sound Mode **29**  
Specifications **Back cover**  
Standard definition source **32**  
Stereo **30, 40**  
Sub **30**

## **T**

Teletext **20, 41**  
Treble **29**  
Troubleshooting **39**  
TV  
    Buttons and Indicators **44**  
    Front Panel **44**  
    Install **8**  
    Prevent the TV from falling down **8**  
    Rear Panel **46**  
    Set Up Your TV Automatically **11**  
    Watching the TV **17**

## **V**

VCR Brand List **22**  
VCR, connect **9, 10**  
VHF/UHF **9, 10, 30**  
Video Label **36**

## **W**

Wide Mode **31**  
Wide Screen menu **31**



# Specifications

|   |  |
|---|--|
| <b>Power requirements</b>                   | 110 – 240 V AC, 50/60 Hz   |
| <b>Power consumption (W)</b>                | Indicated on the rear of the TV.   |
| <b>Television system</b>                    | B/G, I, D/K  |
| <b>Color system</b>                         | PAL, PAL 60, SECAM, NTSC4.43, NTSC3.58   |
| <b>Stereo/Bilingual system</b>              | NICAM Stereo/Bilingual B/G, I, D/K;<br>A2 Stereo/Bilingual (German) B/G  |
| <b>Channel coverage</b>                     | VHF : E2 to E12 / UHF : E21 to E69 / CATV : S01 to S03, S1 to S41<br>VHF : 0 to 12, 5A, 19A / UHF : 28 to 69 / CATV : S01 to S03, S1 to S41 (Australia only)<br>VHF : 1 to 11 / UHF : 21 to 69 / CATV : S01 to S03, S1 to S41 (New Zealand only) |
| <b>B/G</b>                                  |  |
| <b>I</b>                                    | UHF : B21 to B69 / CATV : S01 to S03, S1 to S41  |
| <b>D/K</b>                                  | VHF : C1 to C12, R1 to R12 / UHF : C13 to C57, R21 to R69 / CATV : S01 to S03, S1 to S41, Z1 to Z39  |
| <b>VHF/UHF (Antenna)</b>                    | 75-ohm external terminal   |
| <b>Audio output (Speaker)</b>               | 10 W + 10 W  |
| <b>Number of terminal</b>                   |  |
| <b>VIDEO (Video)</b>                        | Input: 3 Output: 1 Phono jacks; 1 Vp-p, 75 ohms  |
| <b>AUDIO (Audio)</b>                        | Input: 5 Output: 1 Phono jacks; 500 mVrms  |
| <b>S VIDEO (S Video)</b>                    | Input: 2<br>Y: 1 Vp-p, 75 ohms, unbalanced, sync negative<br>C: 0.286 Vp-p, 75 ohms  |
| <b>COMPONENT VIDEO IN (Component Video)</b> | Input: 2<br>Phono jacks<br>Y: 1 Vp-p, 75 ohms, sync negative<br>P <sub>B</sub> /C <sub>B</sub> : 0.7 Vp-p, 75 ohms<br>P <sub>R</sub> /C <sub>R</sub> : 0.7 Vp-p, 75 ohms   |
| <b>(Headphones)</b>                         | Output: 1 Stereo minijack  |
| <b>Display resolution</b>                   | 852 pixels × 480 pixels  |
| <b>Screen size</b>                          | 42 inches  |
| <b>Dimensions (w/h/d, mm)</b>               | 1,075 × 826 × 312 (with stand) ; 1,075 × 750 × 110 (without stand)   |
| <b>Mass (kg)</b>                            | 45 kg (with stand) ; 39.5 kg (without stand)   |

Design and specifications are subject to change without notice.

